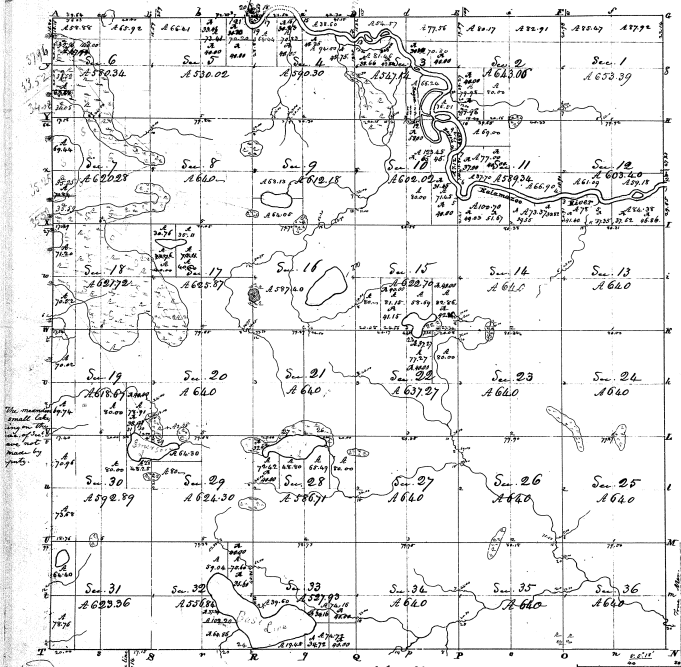


Township N. 1 North, Range XII West No. (No. 107.)



Total A. of Acres 2317.13

The above Map, of Township N. 1 North of Range XII West, Michigan Territory, is strictly conformable to the Field notes of the Survey thereof on file in the Office, and has been examined and approved (with the exception stated in the margin hereof) The said boundary was surveyed in the 2^d quarter of 1837 and found for and changed in said year for a greater or less remaining territory, boundary lines, containing 17 miles, 23 1/2 27 1/2 feet, was surveyed by Thomas Spencer, Esq. in the 2^d quarter of 1830 and a general survey of 22 1/2 miles, 132 1/2 feet, and found for and changed in the same year, and for the 2^d quarter of 1831. The subdivisions, amounting to 83 miles, 64 1/2 feet, surveyed by James G. Gentry, under the same contract, in the 2^d quarter of 1831, and found for and changed in the Survey General, Dec. 6th 1831.

M. J. Pillsbury
Surveyor General's Office,
National, Dec. 26th 1831.

Meanders	Meanders cont.	Meanders cont.
<p>Course 22 Kalamazoo river down stream North bank</p> <p>1. 270 1/2 2. 270 1/2 3. 270 1/2 4. 270 1/2 5. 270 1/2 6. 270 1/2 7. 270 1/2 8. 270 1/2 9. 270 1/2 10. 270 1/2 11. 270 1/2 12. 270 1/2 13. 270 1/2 14. 270 1/2 15. 270 1/2 16. 270 1/2 17. 270 1/2 18. 270 1/2 19. 270 1/2 20. 270 1/2 21. 270 1/2 22. 270 1/2 23. 270 1/2 24. 270 1/2 25. 270 1/2 26. 270 1/2 27. 270 1/2 28. 270 1/2 29. 270 1/2 30. 270 1/2 31. 270 1/2 32. 270 1/2 33. 270 1/2 34. 270 1/2 35. 270 1/2 36. 270 1/2</p>	<p>Course C. 2 Kalamazoo river down stream North bank</p> <p>1. 270 1/2 2. 270 1/2 3. 270 1/2 4. 270 1/2 5. 270 1/2 6. 270 1/2 7. 270 1/2 8. 270 1/2 9. 270 1/2 10. 270 1/2 11. 270 1/2 12. 270 1/2 13. 270 1/2 14. 270 1/2 15. 270 1/2 16. 270 1/2 17. 270 1/2 18. 270 1/2 19. 270 1/2 20. 270 1/2 21. 270 1/2 22. 270 1/2 23. 270 1/2 24. 270 1/2 25. 270 1/2 26. 270 1/2 27. 270 1/2 28. 270 1/2 29. 270 1/2 30. 270 1/2 31. 270 1/2 32. 270 1/2 33. 270 1/2 34. 270 1/2 35. 270 1/2 36. 270 1/2</p>	<p>Course C. 2 Kalamazoo river down stream North bank</p> <p>1. 270 1/2 2. 270 1/2 3. 270 1/2 4. 270 1/2 5. 270 1/2 6. 270 1/2 7. 270 1/2 8. 270 1/2 9. 270 1/2 10. 270 1/2 11. 270 1/2 12. 270 1/2 13. 270 1/2 14. 270 1/2 15. 270 1/2 16. 270 1/2 17. 270 1/2 18. 270 1/2 19. 270 1/2 20. 270 1/2 21. 270 1/2 22. 270 1/2 23. 270 1/2 24. 270 1/2 25. 270 1/2 26. 270 1/2 27. 270 1/2 28. 270 1/2 29. 270 1/2 30. 270 1/2 31. 270 1/2 32. 270 1/2 33. 270 1/2 34. 270 1/2 35. 270 1/2 36. 270 1/2</p>

111
8-37

