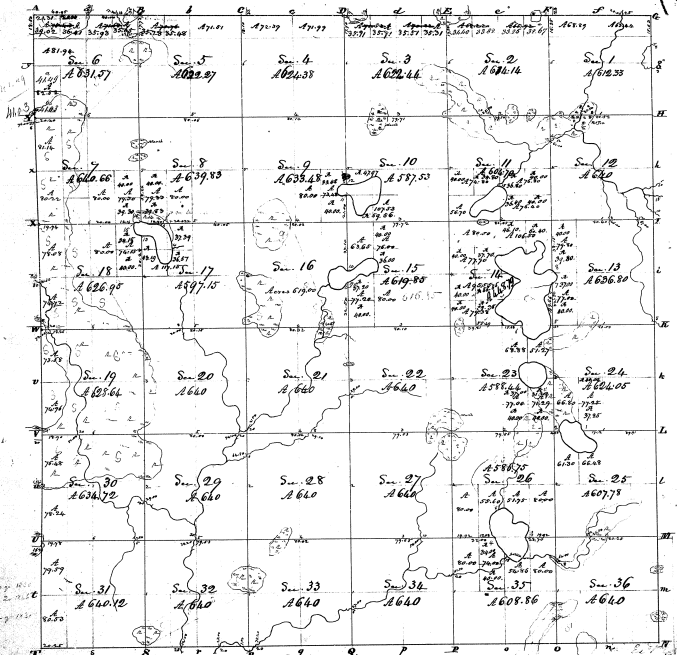


Township N. H. North, Range N. M. West Mer. (Mt. Ter.)



Total Number of Acres 22341.22

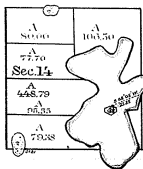
The above map of Township N. H. North, of Range N. M. West of the Meridian, in Michigan Territory, is hereby confirmed to the Public State of the State, thereof, on file in this Office, which have been examined, and found to conform to the original (hand-drawn) plat thereof. The survey was made by Lewis Allen, Secy. of the Eastern boundary in the 14th of 1832, and the 2nd of 1833. The date of the plat is the 14th of 1832, and the date of the original plat is the 14th of 1832. The date of the original plat is the 14th of 1832. The date of the original plat is the 14th of 1832.

George Kennedy, Surveyor
 Vincennes, Ind. 1833

Section		Acres		Section		Acres	
No.	Acres	No.	Acres	No.	Acres	No.	Acres
32	61.00	37	15	38			
33	61.00	38	15	39			
34	61.00	39	15	40			
35	61.00	40	15	41			
36	61.00	41	15	42			
37	61.00	42	15	43			
38	61.00	43	15	44			
39	61.00	44	15	45			
40	61.00	45	15	46			
41	61.00	46	15	47			
42	61.00	47	15	48			
43	61.00	48	15	49			
50	61.00	51	15	52			
53	61.00	54	15	55			
58	61.00	59	15	60			
61	61.00	62	15	63			
64	61.00	65	15	66			
67	61.00	68	15	69			
70	61.00	71	15	72			
73	61.00	74	15	75			
76	61.00	77	15	78			
79	61.00	80	15	81			
82	61.00	83	15	84			
85	61.00	86	15	87			
88	61.00	89	15	90			
91	61.00	92	15	93			
94	61.00	95	15	96			
97	61.00	98	15	99			
100	61.00	101	15	102			
103	61.00	104	15	105			
106	61.00	107	15	108			
109	61.00	110	15	111			
112	61.00	113	15	114			
115	61.00	116	15	117			
118	61.00	119	15	120			
121	61.00	122	15	123			
124	61.00	125	15	126			
127	61.00	128	15	129			
130	61.00	131	15	132			
133	61.00	134	15	135			
136	61.00	137	15	138			
139	61.00	140	15	141			
142	61.00	143	15	144			
145	61.00	146	15	147			
148	61.00	149	15	150			
151	61.00	152	15	153			
154	61.00	155	15	156			
157	61.00	158	15	159			
160	61.00	161	15	162			
163	61.00	164	15	165			
166	61.00	167	15	168			
169	61.00	170	15	171			
172	61.00	173	15	174			
175	61.00	176	15	177			
178	61.00	179	15	180			
181	61.00	182	15	183			
184	61.00	185	15	186			
187	61.00	188	15	189			
190	61.00	191	15	192			
193	61.00	194	15	195			
196	61.00	197	15	198			
199	61.00	200	15	201			
202	61.00	203	15	204			
205	61.00	206	15	207			
208	61.00	209	15	210			
211	61.00	212	15	213			
214	61.00	215	15	216			
217	61.00	218	15	219			
220	61.00	221	15	222			
223	61.00	224	15	225			
226	61.00	227	15	228			
229	61.00	230	15	231			
232	61.00	233	15	234			
235	61.00	236	15	237			
238	61.00	239	15	240			
241	61.00	242	15	243			
244	61.00	245	15	246			
247	61.00	248	15	249			
250	61.00	251	15	252			
253	61.00	254	15	255			
256	61.00	257	15	258			
259	61.00	260	15	261			
262	61.00	263	15	264			
265	61.00	266	15	267			
268	61.00	269	15	270			
271	61.00	272	15	273			
274	61.00	275	15	276			
277	61.00	278	15	279			
280	61.00	281	15	282			
283	61.00	284	15	285			
286	61.00	287	15	288			
289	61.00	290	15	291			
292	61.00	293	15	294			
295	61.00	296	15	297			
298	61.00	299	15	300			
301	61.00	302	15	303			
304	61.00	305	15	306			
307	61.00	308	15	309			
310	61.00	311	15	312			
313	61.00	314	15	315			
316	61.00	317	15	318			
319	61.00	320	15	321			
322	61.00	323	15	324			
325	61.00	326	15	327			
328	61.00	329	15	330			
331	61.00	332	15	333			
334	61.00	335	15	336			
337	61.00	338	15	339			
340	61.00	341	15	342			
343	61.00	344	15	345			
346	61.00	347	15	348			
349	61.00	350	15	351			
352	61.00	353	15	354			
355	61.00	356	15	357			
358	61.00	359	15	360			

7-33

DIAGRAM OF AN ISLAND
IN SEC. 14 TOWNSHIP N^o 2 NORTH, RANGE 12 WEST,
IN THE STATE OF MICHIGAN.



166.50
77.70
448.78
66.33
79.38

1875
MICHIGAN
THE LAND OFFICE

Department of the Interior
General Land Office

May 6th 1875

The above diagram of an Island in Sec. 14 Township N^o 2 North Range 12 West Michigan Meridian in the State of Michigan is a correct plat of survey executed by J. W. Hicks Deputy Surveyor in pursuance of instructions from the Commissioner of the General Land Office bearing date the 13 day of March 1875 and is strictly conformable to the field notes of the Survey thereof which have been examined and approved.

J. S. Bennett
Commissioner
and Ex Officio Surveyor General of the
State of Michigan.

7-2-75