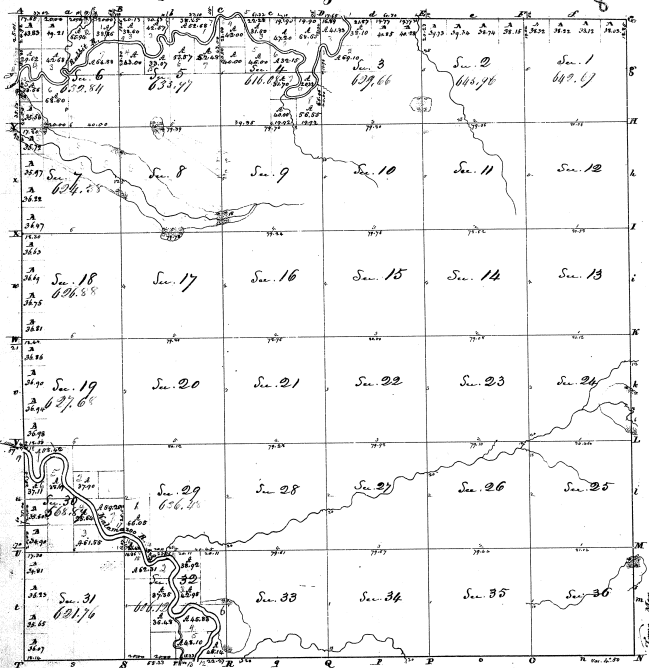


Township N. III North, Range N. XIV West Mer. (Vic. Ter.)



Total Number of Acres 22855.37

Scale of 40 rods to an Inch

Name of Applicant	Section	Acres	Original Grant	Original Date
James Maguire	18	296.58	1832	11/10
Richardson	19	267.68	1832	11/10
Johnston	29	654.32	1832	11/10
Johnston	31	691.76	1832	11/10

This Above Map of Township N. III North of Range N. XIV West of the Meridian is a plat of the same made to the full truth of the survey being made in this office which has been examined & approved.

Surveyor General's Office
 Dubuque Mo. 6th 1833.
 N. T. Moore
 Sur Genl.

Abstract of Returns of Relief Process

Section	Original Grant	Original Date	Acres	Original Grant	Original Date	Acres
1	1832	11/10	449.11	1832	11/10	449.11
2	1832	11/10	444.76	1832	11/10	444.76
3	1832	11/10	464.64	1832	11/10	464.64
4	1832	11/10	230.44	1832	11/10	230.44
5	1832	11/10	449.11	1832	11/10	449.11
6	1832	11/10	534.71	1832	11/10	534.71
7	1832	11/10	464.64	1832	11/10	464.64
8	1832	11/10	479.66	1832	11/10	479.66
9	1832	11/10	444.76	1832	11/10	444.76
10	1832	11/10	449.11	1832	11/10	449.11
11	1832	11/10	444.76	1832	11/10	444.76
12	1832	11/10	449.11	1832	11/10	449.11
13	1832	11/10	444.76	1832	11/10	444.76
14	1832	11/10	449.11	1832	11/10	449.11
15	1832	11/10	444.76	1832	11/10	444.76
16	1832	11/10	449.11	1832	11/10	449.11
17	1832	11/10	444.76	1832	11/10	444.76
18	1832	11/10	296.58	1832	11/10	296.58
19	1832	11/10	267.68	1832	11/10	267.68
20	1832	11/10	444.76	1832	11/10	444.76
21	1832	11/10	449.11	1832	11/10	449.11
22	1832	11/10	444.76	1832	11/10	444.76
23	1832	11/10	449.11	1832	11/10	449.11
24	1832	11/10	444.76	1832	11/10	444.76
25	1832	11/10	449.11	1832	11/10	449.11
26	1832	11/10	444.76	1832	11/10	444.76
27	1832	11/10	449.11	1832	11/10	449.11
28	1832	11/10	444.76	1832	11/10	444.76
29	1832	11/10	654.32	1832	11/10	654.32
30	1832	11/10	449.11	1832	11/10	449.11
31	1832	11/10	691.76	1832	11/10	691.76
32	1832	11/10	444.76	1832	11/10	444.76
33	1832	11/10	449.11	1832	11/10	449.11
34	1832	11/10	444.76	1832	11/10	444.76
35	1832	11/10	449.11	1832	11/10	449.11
36	1832	11/10	444.76	1832	11/10	444.76

8-30