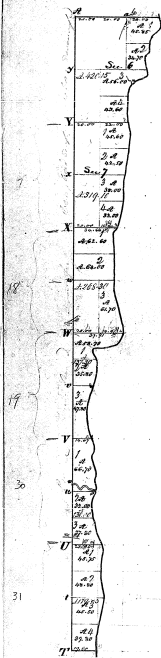


Resurvey  
Township N<sup>o</sup> 17<sup>th</sup>. Range N<sup>o</sup> 5 E. Mer. Mich.



Sagawaw Bay.

Township	Section	Mention of Unoccupied Property		Mention of Occupied Property		Total
		Acres	Value	Acres	Value	
1	S 36 E	2.70				
	S 36 W	2.70				
	S 36 N	2.70				
	S 36 S	2.70				
	S 36 E	2.70				
	S 36 W	2.70				
	S 36 N	2.70				
2	S 36 E	2.70				
	S 36 W	2.70				
	S 36 N	2.70				
3	S 36 E	2.70				
	S 36 W	2.70				
	S 36 N	2.70				
4	S 36 E	2.70				
	S 36 W	2.70				
	S 36 N	2.70				
	S 36 S	2.70				
	S 36 E	2.70				
	S 36 W	2.70				
	S 36 N	2.70				
5	S 36 E	2.70				
	S 36 W	2.70				
	S 36 N	2.70				
	S 36 S	2.70				
	S 36 E	2.70				
	S 36 W	2.70				
	S 36 N	2.70				
6	S 36 E	2.70				
	S 36 W	2.70				
	S 36 N	2.70				
	S 36 S	2.70				
	S 36 E	2.70				
	S 36 W	2.70				
	S 36 N	2.70				
7	S 36 E	2.70				
	S 36 W	2.70				

32-18

Total number of Acres 1,000.00					
Survey designated	By whom surveyed	Date of survey	Amount of Survey in Acres	When surveyed	When passed on to the Govt
Township lines	Joseph W. H. H.			17 <sup>th</sup> 1820	
Subdivisions	John D. H.	Aug 17 <sup>th</sup> 1843	5.27.58	5 <sup>th</sup> 1843	2 <sup>nd</sup> of 1843

We above set of Township 17<sup>th</sup> North Range 5<sup>th</sup> East of the Principal Meridian Michigan is a truly correct and full set of the survey thereof as it has been taken and approved by the Surveyor General of Michigan and approved by the State of Michigan  
 C. W. H. H. 1843  
 C. W. H. H. 1843