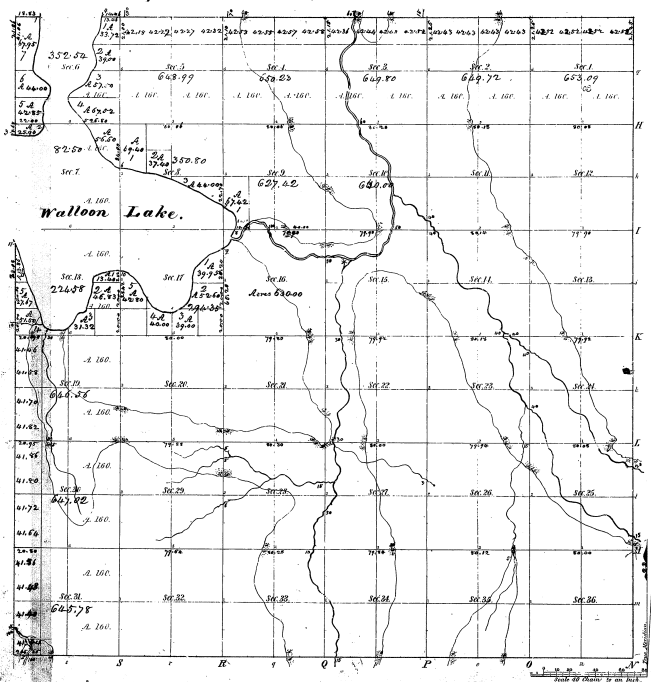


Township 1° 33' N Range 1° 5' W . Mer. Mich.



**Measure of Walloon Lake.**  
 P.M. Cont. 1812' P.M. Cont. 1812' P.M. Cont. 1812' P.M. Cont. 1812' P.M. Cont. 1812'

11	1812	1800
	1812	1800
	1812	1800
	1812	1800
	1812	1800
	1812	1800
	1812	1800
	1812	1800
	1812	1800
	1812	1800
10	1812	1800
	1812	1800
	1812	1800
	1812	1800
	1812	1800
	1812	1800
	1812	1800
9	1812	1800
	1812	1800
	1812	1800
	1812	1800
	1812	1800
	1812	1800
	1812	1800
8	1812	1800
	1812	1800
	1812	1800
	1812	1800
	1812	1800
	1812	1800
	1812	1800
7	1812	1800
	1812	1800
	1812	1800
	1812	1800
	1812	1800
	1812	1800
	1812	1800
6	1812	1800
	1812	1800
	1812	1800
	1812	1800
	1812	1800
	1812	1800
	1812	1800
5	1812	1800
	1812	1800
	1812	1800
	1812	1800
	1812	1800
	1812	1800
	1812	1800
4	1812	1800
	1812	1800
	1812	1800
	1812	1800
	1812	1800
	1812	1800
	1812	1800
3	1812	1800
	1812	1800
	1812	1800
	1812	1800
	1812	1800
	1812	1800
	1812	1800
2	1812	1800
	1812	1800

15, 16  
 18-16

Total number of Acres 21, 693.40

Survey Original	By Whom Surveyed	Date of Contract	Amount of Survey	When Surveyed
Township 1° 33' N.	H. W. H. V.	15 1840	10 11	15 1840
Subdivisions	C. H. Gilbert et al.	6 1846	66 39	1841 67 1841

This plat was made for Township 1° 33' N. of Range 1° 5' West of the Principal Meridian, Michigan, as finally determined to the full width of the survey district for the section offices, which have been previously well approved.

Surveyor General's Office  
 Cincinnati, Dec. 24, 1841.

Geo. Sear.