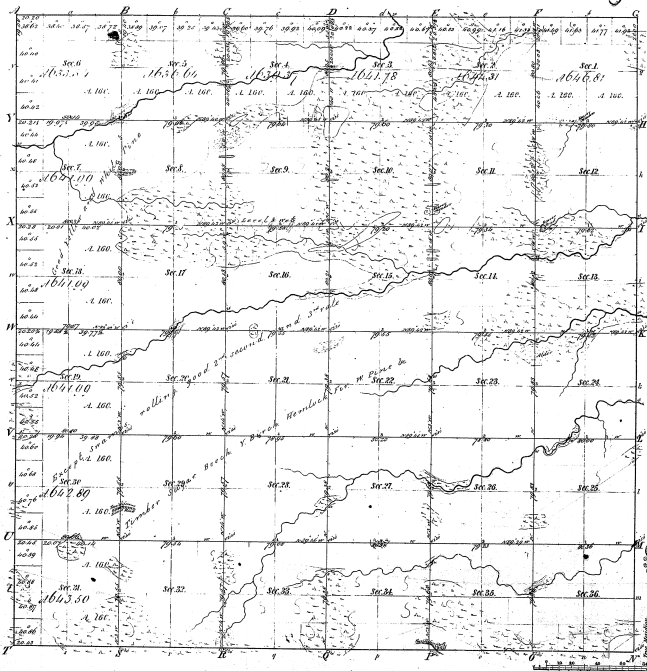


Township 17° 44' N Range 17° 4' W Mer. Mich.



Total number of Acres 23054.81

Survey designated	By whom surveyed	Date of settlement	Amount of Survey	When Surveyed	Where "set apart" or "surveyed"
Township lines	A. J. Clark	June 15, 1816	36 Secs.	1816	Michigan
Sections	Harvey Allen	June 29, 1853	29 Secs.	1853	Michigan

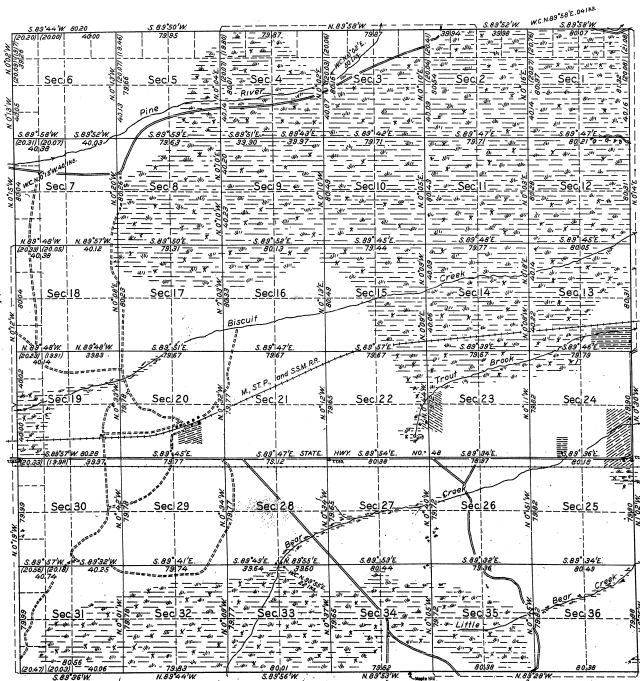
The above copy of Township 17° 44' North of Range 17° 4' West of the Meridian, Northern Michigan is a copy of the original of the survey filed in the office, which has been examined and approved.
 Surveyor General's Office,
 Lansing, June 8, 1858
 Charles C. Gildersleepe
 Sp. Secy.

Number of
 Pub. Courses 1816
 Pub. Courses 1818
 Pub. Courses 1822

17-4
 31

TOWNSHIP NO. 44 NORTH, RANGE NO. 4 WEST, MICHIGAN MERIDIAN, MICHIGAN

DEPENDENT RESURVEY



34-31

34-31

MEMORANDUM

THIS PLAT OF THE RESURVEY OF TOWNSHIP 44 NORTH, RANGE 4 WEST, Delineates a RETRACEMENT and REESTABLISHMENT OF THE LINES OF THE ORIGINAL SURVEY AS SHOWN UPON THE PLAT APPROVED JUNE 5, 1851, IN THEIR TRUE ORIGINAL POSITIONS ACCORDING TO THE BEST AVAILABLE EVIDENCE OF THE ORIGINAL CORNERS. ALL DIFFERENCES BETWEEN THE MEASUREMENTS SHOWN ON THE ORIGINAL PLAT AND THOSE DERIVED IN THE RETRACEMENT HAVE BEEN DISTRIBUTED PROPORTIONALLY BETWEEN ACCEPTED CORNERS IN ACCORDANCE WITH SURVEYING RULES. REFERENCE WILL BE MADE TO THE ORIGINAL PLAT FOR THE SHOWING OF AREAS OF THE VARIOUS SUBDIVISIONS.

AUTHORITY FOR THE RESURVEY IS CONTAINED IN GENERAL LAND OFFICE LETTER 140850L "E" DATED MARCH 1, 1931, WHICH BEARS DEPARTMENTAL APPROVAL UNDER DATE OF MARCH 5, 1931.

THIS TOWNSHIP HAS LARGE AREAS OF CUT-OVER CEDAR, SPRUCE AND TAMARACK SWAMPS IN THE NORTHERN AND SOUTHERN PARTS. THE UPLAND HAS A VERY SCANTY GROWTH OF SMALL POPULAR AND JACK PINE, EXCEPT FOR SMALL AREAS UNDER CULTIVATION.

OFFICE OF U. S. SUPERVISOR OF SURVEYS.

DENVER, COLORADO, JULY 1, 1935

THE ABOVE PLAT OF TOWNSHIP NO. 44 NORTH, RANGE NO. 4 WEST OF THE MICHIGAN MERIDIAN, IN THE STATE OF MICHIGAN, IS STRICTLY CONFORMABLE TO THE FIELD NOTES OF THE RESURVEY THEREOF, WHICH HAVE BEEN EXAMINED AND APPROVED.

Wm. H. Linn
U. S. SUPERVISOR OF SURVEYS

DEPARTMENT OF THE INTERIOR,
GENERAL LAND OFFICE.

WASHINGTON, D. C., FEBRUARY 20, 1936

THE SURVEY REPRESENTED BY THIS PLAT, HAVING BEEN CORRECTLY EXECUTED IN ACCORDANCE WITH THE REQUIREMENTS OF LAW AND THE REGULATIONS OF THIS OFFICE, IS HEREBY ACCEPTED.

Antoinette Hurd
ASSISTANT COMMISSIONER.

SCALE, 40 CHAINS TO AN INCH. AREA RESURVEYED, 23,054.81 ACRES.

LINES DESIGNATED	BY WHOM SURVEYED	GROUP		MILEAGE		WHEN SURVEYED	
		NO.	DATE	MLS.	CHS.	BEGIN	COMPLETED
EXTERIOR	GUY R. VEAL, U. S. CADASTRAL ENGINEER.	34	APRIL 3, 1935.	26	1.77	JUNE 27, 1935.	SEPT. 9, 1935.
SUBDIVISIONAL				59	77.15		