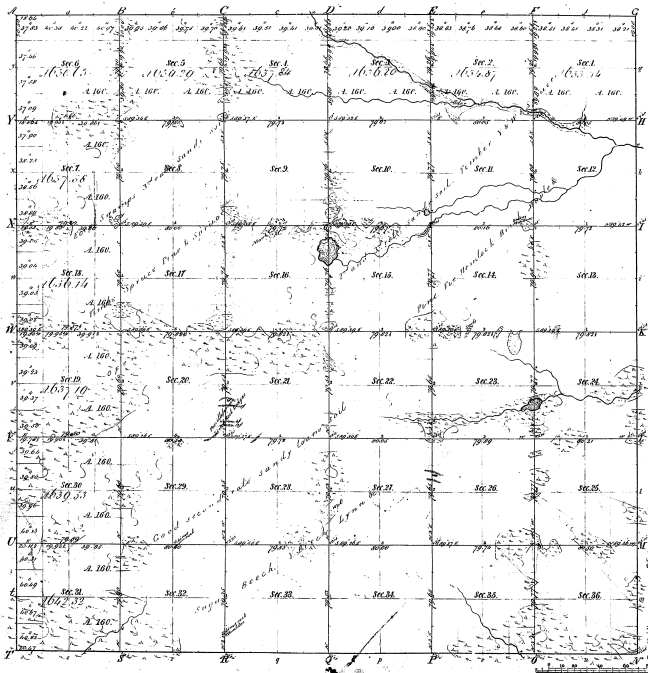


Township 1° 44 N Range 1° 5 E Mer. Mich



Boundaries of  
 Public Courses 1842 Public Courses 1842 Public Courses 1842

3413

34-52

Total number of Acres 2300103

Survey Designated	By Whom Surveyed	Date of Certificate	Amount of Survey	When Surveyed	Area of Survey in Acres
Township 144 N	W. A. Reed	Jan. 25 1840	36	1840	36
Subdivisions	Maxwell Miller	June 29 1842	27	1842	27

The above copy of Township 1° 44 North of Range 1° 5 East of the Principal Meridian Michigan is a copy of the original plat of the survey thereon on file in this office, which has been examined and approved.

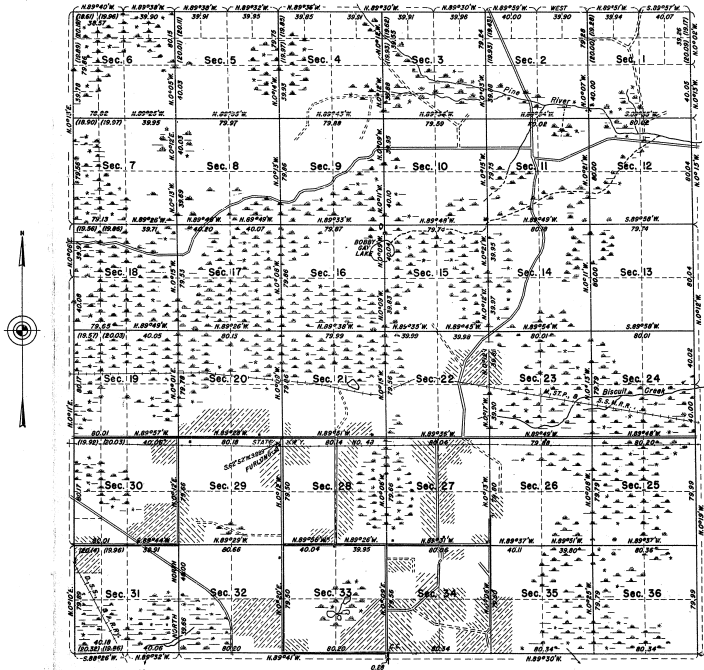
Surveyor General's Office,  
 Detroit, June 6, 1851

Charles H. H. H.  
 Sur. Gen.

54-32

TOWNSHIP No. 44 NORTH, RANGE No. 5 WEST, MICHIGAN MERIDIAN, MICHIGAN.  
DEPENDENT RESURVEY

34-32



MEMORANDUM

THIS PLAT OF THE RESURVEY OF T. 44 N., R. 5 W., DEMONSTRATES A RETRACEMENT AND REESTABLISHMENT OF THE LINES OF THE ORIGINAL SURVEY AS SHOWN UPON THE PLAT APPROVED UNDER 5,897, IN THEIR TRUE ORIGINAL POSITIONS ACCORDING TO THE BEST AVAILABLE EVIDENCE OF THE POSITION OF THE ORIGINAL CORNERS. ALL DIFFERENCES BETWEEN THE MEASUREMENTS SHOWN ON THE ORIGINAL PLAT AND THOSE DERIVED IN THE RETRACEMENT HAVE BEEN DISTINGUISHED HORIZONTALITY BETWEEN ACCEPTED CORNERS IN ACCORDANCE WITH SURVEYING RULES. REFERENCE WILL BE MADE TO THE ORIGINAL PLAT FOR THE SHOWING OF AREAS AND MORE DETAILED DESCRIPTIONS OF THE VARIOUS SMALLER SUBDIVISIONS.

THE RESURVEY WAS EXECUTED PURSUANT TO AUTHORITY CONTAINED IN GENERAL LAND OFFICE LETTER 1148812 "M" DATED FEBRUARY 12, 1925, AND LETTER DATED AUGUST 4, 1937, WHICH BEARS DEPARTMENTAL APPROVAL ON THE SAME DATE.

Scale: 40 Chains to an inch.

Area Resurveyed: 23,001.03 Acres.

LINES DESIGNATED	BY WHOM SURVEYED	GROUP	DATE	WHEN SURVEYED	
				MILEAGE	COMPLETED
				CHS.	
Exterior	Oscar B. Welch	41	July 10,	12 1.36	July 20,
Subdivisional			1937	59 70.14	1937
					September 30,
					1937

OFFICE OF SUPERVISOR OF SURVEYS  
DENVER, COLORADO, APRIL 3, 1942.  
THE ABOVE PLAT OF TOWNSHIP NO. 44 NORTH, RANGE NO. 5 WEST, OF THE MICHIGAN MERIDIAN, MICHIGAN, IS STRICTLY CONFORMABLE TO THE FIELD NOTES OF THE RESURVEY THEREOF, WHICH HAVE BEEN EXAMINED AND APPROVED.

*Samuel Johnson*  
SUPERVISOR OF SURVEYS.

UNITED STATES  
DEPARTMENT OF THE INTERIOR  
GENERAL LAND OFFICE  
WASHINGTON, D.C., APRIL 10, 1942.

THE RESURVEY REPRESENTED BY THIS PLAT, HAVING BEEN CORRECTLY EXECUTED IN ACCORDANCE WITH THE REQUIREMENTS OF LAW AND THE REGULATIONS OF THIS OFFICE, IS HEREBY APPROVED.  
*Joseph Howard Wilson*  
ASSISTANT COMMISSIONER.