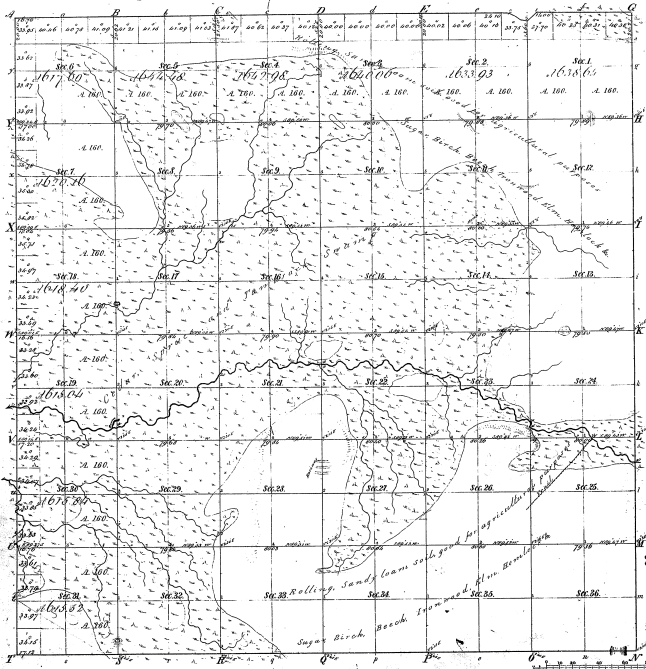


Township N<sup>o</sup> 46 N. Range N<sup>o</sup> 6 W Mer. Mich.,



Members of  
First Course 1848 First Course 1854 First Course 1860

34-19

34-19

Warrant  
23.50, 19 1/2

Total number of acres 22002.66

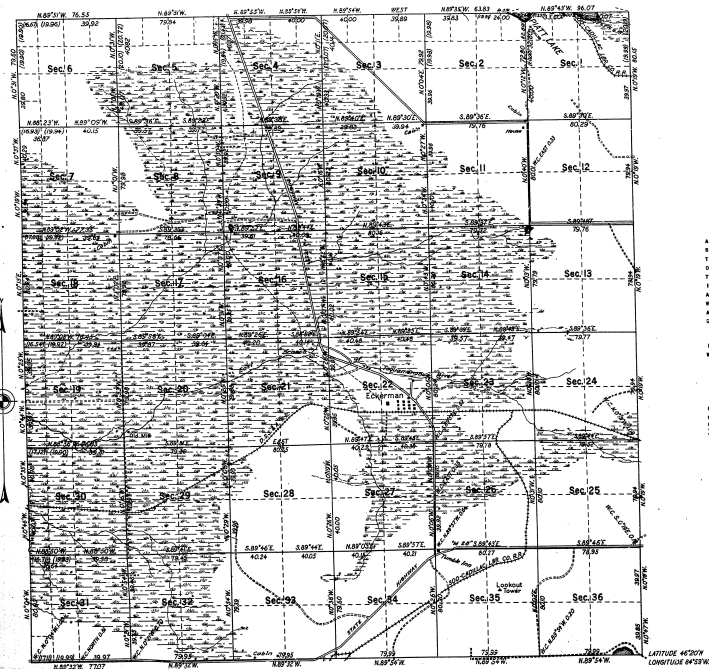
Survey Designated	By Whom Surveyed	Date of Contract	Amount of Survey	When Surveyed	Number of Acres
Township lines	H. C. Reed	Jan. 16. 1848	74 3/4	7 <sup>th</sup> Decr 1860	1
Subdivisions	Wells, Reed	Jan. 29. 1860	60. 65. 92	Jan. 1860	30000

The above map of Township N. 46 North of Range N. 6 West of the Principal Meridian Michigan is a true and correct copy of the survey done in the field and has been examined and approved  
Surveyor General's Office  
Detroit June 5. 1865  
Charles D. Bell  
Supt. Genl.

## DEPENDENT RESURVEY

34-11

34-19



## MEMORANDUM

THIS PLAT OF THE RESURVEY OF T. 46 N., R. 6 W., DELINEATES A RETRACEMENT AND REESTABLISHMENT OF THE LINES OF THE ORIGINAL SURVEY, AS SHOWN UPON THE P.L.S. APPROVED JUNE 5, 1931, IN THEIR TRUE ORIGINAL POSITIONS ACCORDING TO THE BEST AVAILABLE EVIDENCE OF THE POSITION OF THE ORIGINAL CORNER. ALL DIFFERENCES BETWEEN THE MEASUREMENTS SHOWN ON THE ORIGINAL PLAT AND THOSE DERIVED IN THE RETRACEMENT HAVE BEEN DISTRIBUTED PROPORTIONALLY BETWEEN ACCEPTED CORNERS IN ACCORDANCE WITH SURVEYING RULES. REFERENCE WILL BE MADE TO THE ORIGINAL PLAT FOR THE SHOWING OF THE AREAS AND MORE DETAILED DESCRIPTIONS OF THE VARIOUS SMALLER SUBDIVISIONS.

THE RESURVEY WAS EXECUTED PURSUANT TO AUTHORITY CONTAINED IN GENERAL LAND OFFICE LETTER 1409000, "C" DATED MARCH 4, 1931, WHICH BEARS DEPARTMENTAL APPROVAL UNDER DATE OF MARCH 5, 1931.

THE TIMBER ON THE UPLAND IN THIS TOWNSHIP, WITH THE EXCEPTION OF THE NORTH RANGE OF SECTIONS, CONSISTS OF SECOND GROWTH MAPLE, BEECH, BIRCH, AND HICKORY. IN SECS. 1, 2, 3, 4, 5, 6, AND 7, THERE IS A VIRGIN GROWTH OF EXCELLENT COMMERCIAL TIMBER, WITH MAPLE AND BEECH PREDOMINATING.

100 0 50 100 50

SCALE: 1/2" EQUALS TO AN INCH

AREA RESURVEYED: 22,902.66 ACRES

OFFICE OF THE SUPERVISOR OF SURVEYS  
DENVER, COLORADO, March 25, 1937

UNITED STATES  
DEPARTMENT OF THE INTERIOR  
GENERAL LAND OFFICE  
WASHINGTON, D. C., JANUARY 29, 1938.

THE ABOVE PLAT OF TOWNSHIP NO. 46 NORTH, RANGE NO. 6 WEST, MICHIGAN MERIDIAN, MICHIGAN, IS TRUSTFULLY CONFORMABLE TO THE FIELD NOTES OF THE RESURVEY THEREOF, WHICH HAVE BEEN EXAMINED AND APPROVED.

THE RESURVEY REPRESENTED BY THIS PLAT, HAVING BEEN PROPERLY EXECUTED IN ACCORDANCE WITH THE REQUIREMENTS OF LAW AND THE REGULATIONS OF THIS OFFICE, IS HEREBY ACCEPTED.

*Walter D. Miller*  
SUPERVISOR OF SURVEYS.

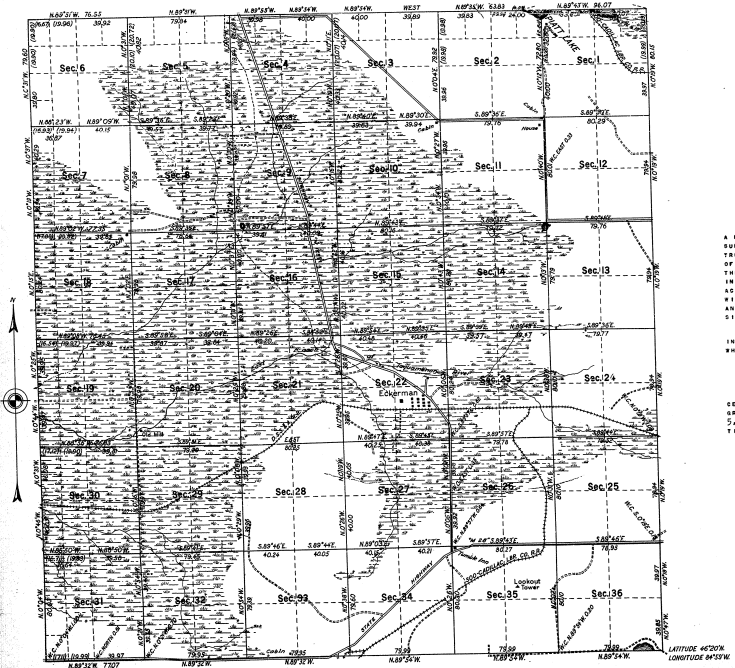
*Arthur H. Smith*  
ASSISTANT COMMISSIONER.

LINES DESIGNATED BY WHOM SURVEYED	GROUP	MILEAGE		WHEN SURVEYED			
		NO.	DATE	MLRS.	CH.	BEGUN	COMPLETED
EXTERIOR				23	70.96		
SUBDIVISIONAL	WILLIS W. BARNY, OSCAR S. WALLEN, TOM V. WILDER	37	JULY 9, 1935	59	53.67	JUNE 13, 1936	OCTOBER 8, 1936
DEMAND					27.29		

TOWNSHIP NO. 46 NORTH, RANGE NO. 6 WEST, MICHIGAN MERIDIAN, MICHIGAN

DEPENDENT RESURVEY

34-19  
834-19



MEMORANDUM

THIS PLAT OF THE RESURVEY OF T. 46 N., R. 6 W., DELINEATES A RETRACEMENT AND RESET ALIGNMENT OF THE LINES OF THE ORIGINAL SURVEY, AS SHOWN UPON THE ACET APPROVED JUNE 5, 1851, IN THEIR POSITION OF THE ORIGINAL CORNERS. ALL DIFFERENCES BETWEEN THE MEASUREMENTS SHOWN ON THE ORIGINAL PLAT AND THOSE DERIVED IN THE RETRACEMENT HAVE BEEN DISTRIBUTED PROPORTIONALLY BETWEEN ACCEPTED CORNERS IN ACCORDANCE WITH SURVEYING RULES. REFERENCE WILL BE MADE TO THE ORIGINAL PLAT FOR THE SHOWING OF THE AREAS AND MORE DETAILED DESCRIPTIONS OF THE VARIOUS SMALLER SUBDIVISIONS.

THE RESURVEY WAS EXECUTED PURSUANT TO AUTHORITY CONTAINED IN GENERAL LAND OFFICE LETTER 1106604, DATED MARCH 4, 1930, WHICH BEARS DEPARTMENTAL APPROVAL UNDER DATE OF MARCH 5, 1931.

THE TIMBER ON THE UPLAND IN THIS TOWNSHIP, WITH THE EXCEPTION OF THE NORTH RANGE OF SECTIONS, CONSISTS OF SECOND GROWTH MAPLE, BEECH, BIRCH, AND HEMLOCK. IN SECS. 1, 2, 3, 4, 5, 6, AND 7, THERE IS A VIRGIN GROWTH OF EXCELLENT COMMERCIAL TIMBER, WITH MAPLE AND BEECH PREDOMINATING.

SCALE 10 CHAINS TO AN INCH

AREA RESURVEYED: 22,902.68 ACRES

OFFICE OF THE SUPERVISOR OF SURVEYS  
DENVER, COLORADO, MARCH 29, 1937

UNITED STATES  
DEPARTMENT OF THE INTERIOR  
GENERAL LAND OFFICE  
WASHINGTON, D.C.  
JANUARY 29, 1936.

THE ABOVE PLAT OF TOWNSHIP NO. 46 NORTH, RANGE NO. 6 WEST, MICHIGAN MERIDIAN, MICHIGAN, IS STRICTLY CONFORMABLE TO THE FIELD NOTES OF THE RESURVEY THERE-  
OF, WHICH HAVE BEEN FOLLOWED TO THE FOLLOWING:

LINES DESIGNATED BY WHOM SURVEYED	GROUP NO.	MILEAGE		WHEN SURVEYED	
		MRS.	CHS.	BEGUN	COMPLETED
EXTERIOR	37	23	70.96		
SUBDIVISIONAL		JULY 9, 1935	59	53.67	JUNE 15, 1936
REARER				27.29	OCTOBER 8, 1936

*Donald J. Duman*  
SUPERVISOR OF SURVEYS

IN HEREBY ACCEPTED  
*Antonietta Linnell R.*  
ASSISTANT COMMISSIONER