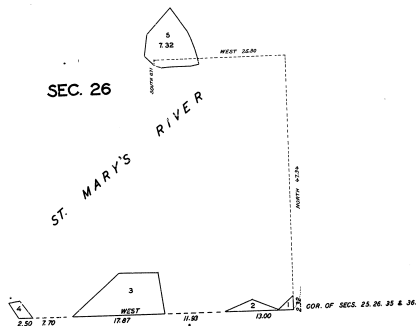


TOWNSHIP NO. 47 NORTH, RANGE NO. 2 WEST OF THE MICHIGAN MERIDIAN, MICHIGAN.
SUPPLEMENTAL PLAT OF SECTION 26.

SCALE - 10 CHAINS TO AN INCH.

34-12
34-12



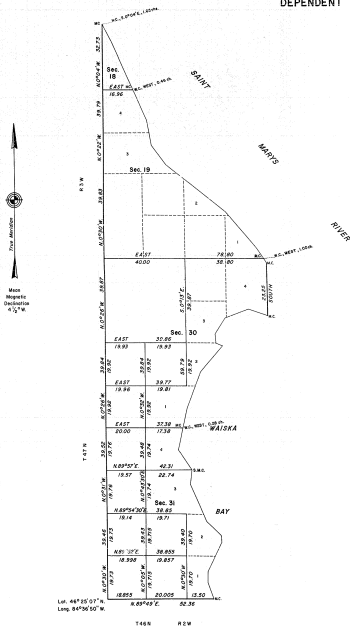
Department of the Interior
General Land Office
Washington, D.C., July 5, 1930.

The above supplemental plat of Sec. 26, Township No. 47 North, Range No. 2 West, of the Michigan Meridian, Michigan, based upon plat approved March 15, 1929, and September 25, 1929, showing the lotting of a surveyed island to which no lot number had previously been assigned, to accommodate a selection by the State of Michigan under the exchange act of July 21, 1912 (37 Stat. 561), having been correctly prepared in accordance with the regulations of this office, is hereby approved.

J. K. Smith
Acting Assistant Commissioner

TOWNSHIP 47 NORTH, RANGE 2 WEST, OF THE MICHIGAN MERIDIAN, MICHIGAN

DEPENDENT RESURVEY AND SURVEY



This plat represents a dependent resurvey of a portion of the west boundary, a portion of the subdivision lines, designed to restore the corners to their true original positions according to the best available evidence, and the subdivision of sections 39 and 31 of T. 47 N., R. 2 W., Michigan Meridian, Michigan, for the purpose of segregating Indian Lands. A history of surveys is contained in the field notes.

This survey was executed by Stephen E. Koppah, Cadastral Surveyor, beginning June 17, 1975 and completed August 20, 1975, pursuant to Special Instructions, dated June 3, 1975, for Group No. 76, Michigan.

UNITED STATES DEPARTMENT OF THE INTERIOR
BUREAU OF LAND MANAGEMENT
Denver, Colorado December 6, 1979

This plat is strictly conformable to the approved field notes, and the survey, having been correctly executed in accordance with the requirements of law and the regulations of this Bureau, is hereby accepted.

For the Director

Chief, Cadastral Survey,
Examination & Approval Staff

