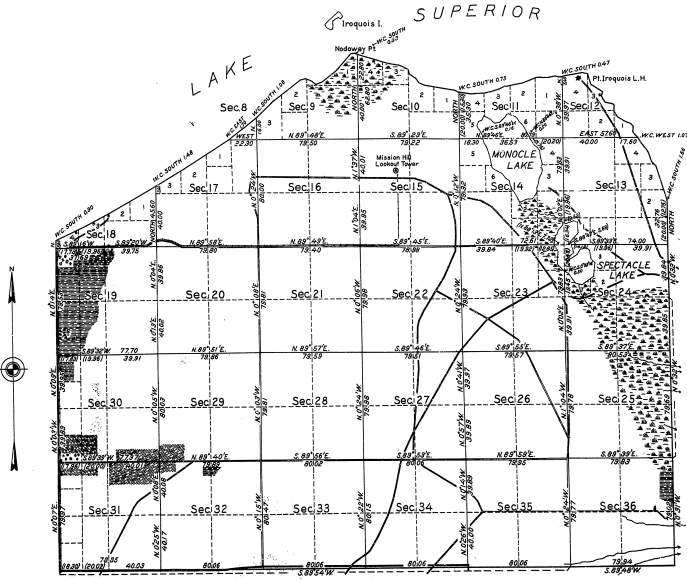


TOWNSHIP NO. 47 NORTH, RANGE NO. 3 WEST, MICHIGAN MERIDIAN, MICHIGAN

DEPENDENT RESURVEY

34-11

34-116



SCALE: 40 CHAINS TO AN INCH.

AREA RESURVEYED: 15,770.07 ACRES.

LINES DESIGNATED BY WHOM SURVEYED	GROUP NO.	DATE	MILEAGE		WHEN SURVEYED		
			MLS.	CHG.	BEGUN	COMPLETED	
EXTERIOR SUBDIVISIONAL MEANDERS	GUY R. VEAL, U. S. CADASTRAL ENGINEER	34	APRIL 3, 1933,	18 43	34.77 55.12	MAY 3, 1933.	JUNE 26, 1933.
				11	64.66		

MEMORANDUM

THIS PLAT OF THE RESURVEY OF TOWNSHIP 47 NORTH, RANGE 3 WEST, DELINEATES A RETRACEMENT AND REESTABLISHMENT OF THE LINES OF THE ORIGINAL SURVEY AS SHOWN UPON THE PLAT APPROVED MARCH 12, 1890, IN THEIR TRUE ORIGINAL POSITIONS ACCORDING TO THE BEST AVAILABLE EVIDENCE OF THE ORIGINAL CORNERS. ALL DIFFERENCES BETWEEN THE MEASUREMENTS SHOWN ON THE ORIGINAL PLAT AND THOSE OBTAINED IN THE RETRACEMENT HAVE BEEN DISTRIBUTED PROPORTIONALLY BETWEEN ACCEPTED CORNERS IN ACCORDANCE WITH SURVEYING RULES. REFERENCE WILL BE MADE TO THE ORIGINAL PLAT FOR THE SHOWING OF AREAS OF THE VARIOUS SUBDIVISIONS.

AUTHORITY FOR THE RESURVEY IS CONTAINED IN GENERAL LAND OFFICE LETTER 118060, "C" DATED MARCH 4, 1931, WHICH BEARS DEPARTMENTAL APPROVAL UNDER DATE OF MARCH 5, 1931.

THE TOWNSHIP HAS CEDAR AND SPRUCE SWAMPS IN THE EASTERN AND NORTHERN PARTS. THE UPLAND HAS A SCATTERING GROWTH OF TIMBER, CONSISTING OF YOUNG PINE, OAK, POPLAR AND MAPLE, EXCEPT IN THE CULTIVATED AREAS IN THE WESTERN PART. LARGE PLANTATIONS OF YOUNG PINE ARE LOCATED IN THE SOUTHERN PART OF THE TOWNSHIP.

OFFICE OF U. S. SUPERVISOR OF SURVEYS,
DENVER, COLORADO, JULY 1, 1935

THE ABOVE PLAT OF TOWNSHIP NO. 47 NORTH, RANGE NO. 3 WEST OF THE MICHIGAN MERIDIAN IN THE STATE OF MICHIGAN, IS STRICTLY CONFORMABLE TO THE FIELD NOTES OF THE RESURVEY THEREOF, WHICH HAVE BEEN EXAMINED AND APPROVED.

Walter J. Johnson

U. S. SUPERVISOR OF SURVEYS.

DEPARTMENT OF THE INTERIOR,
GENERAL LAND OFFICE.

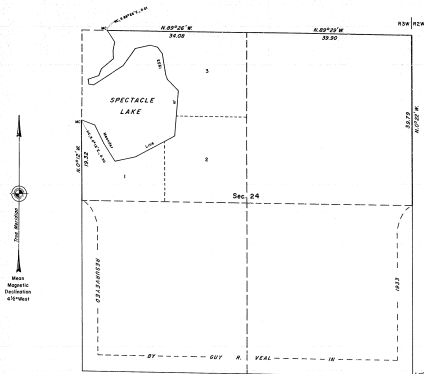
WASHINGTON, D. C., FEBRUARY 26, 1936.

THE SURVEY REPRESENTED BY THIS PLAT, HAVING BEEN CORRECTLY EXECUTED IN ACCORDANCE WITH THE REQUIREMENTS OF LAW AND THE REGULATIONS OF THIS OFFICE, IS HEREBY ACCEPTED.

Charles W. Smith
ASSISTANT COMMISSIONER.

TOWNSHIP 47 NORTH, RANGE 3 WEST, OF THE MICHIGAN MERIDIAN, MICHIGAN.

DEPENDENT RESURVEY



A history of surveys is contained in the field notes.

This plat represents a dependent resurvey of a portion of the East boundary and portions of the subdivision lines, designed to restore the corners in their true original positions according to the best available evidence, of T. 47 N., R. 3 W., Michigan Meridian, Michigan, for purposes of segregation of Indian Lands.

This survey was executed by Stephen G. Kosch, Cadastral Surveyor, beginning June 17, 1929 and completed August 20, 1932, pursuant to Special Instructions dated June 3, 1925, for Group No. 76, Michigan.

UNITED STATES DEPARTMENT OF THE INTERIOR
BUREAU OF LAND MANAGEMENT
Denver, Colorado December 6, 1933

This plat is strictly conformable to the approved field notes, and the survey, having been correctly executed in accordance with the requirements of law and the regulations of this Bureau, is hereby accepted.

For the Director

Chief, Cadastral Survey
Examination & Approval Staff