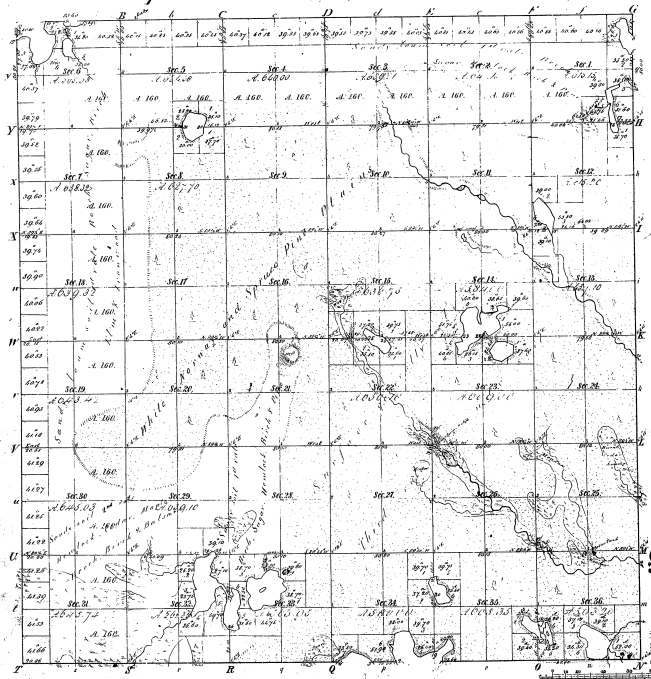


Township 1° 43' N. Range 1° 18' W. Mer. Mich.



Reminders of
 Paul Crocker 1812 Paul Crocker 1812 Paul Crocker 1812

37-2

37-27

Reminders of Paul Crocker 1812

Total number of Acres 22,000.00

Survey Designated	By Whom Surveyed	Date of Contract	Amount of Survey	When Surveyed	How far and in what direction from the last lot
Township lines	H. A. Buel	April 1 1812	71 34 1/2	1812	
Subdivisions	A. Maynard	June 2 1812	74 21 1/2	1812	

The above Map of Township 1° 43' N. 18' W. of Range 1° 18' W. Mer. Mich. is hereby confirmed to the full value of the survey thereon filed in this Office, which have been purchased and approved.

Survey General Office
 Detroit Dec. 14 1812

Charles H. Allen Surveyor General

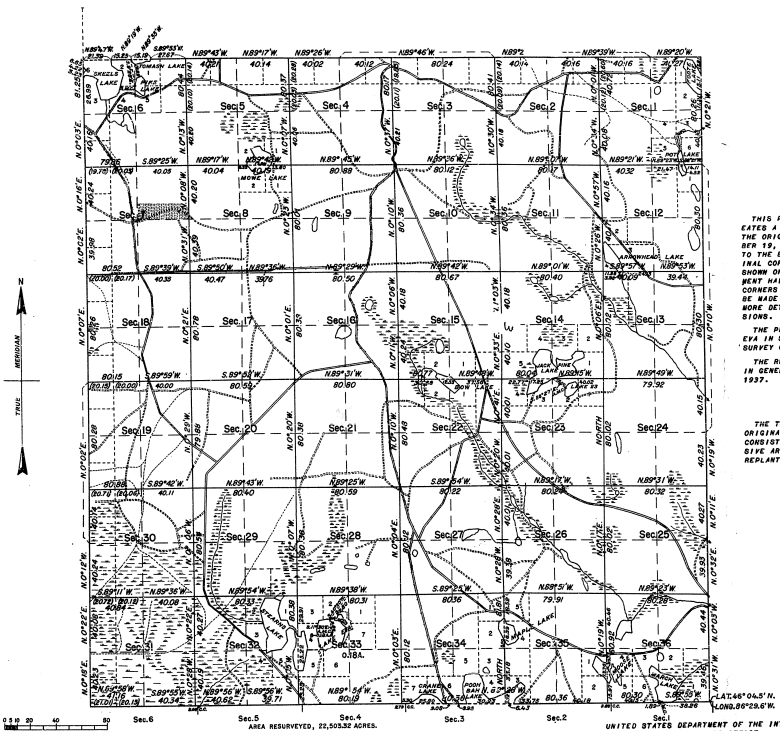
5) 25-25

TOWNSHIP NO.43 NORTH, RANGE NO.18 WEST, OF THE MICHIGAN MERIDIAN, MICHIGAN.

3727

DEPENDENT RESURVEY.

ISLAND SURVEY, SECTION 33.



MEMORANDUM.

THIS PLAT OF THE RESURVEY OF T. 43 N., R. 18 W., DELINEATES A RETIREMENT AND REESTABLISHMENT OF THE LINES OF THE ORIGINAL SURVEY AS SHOWN UPON THE PLAT APPROVED DECEMBER 19, 1890, IN THEIR TRUE ORIGINAL POSITIONS ACCORDING TO THE BEST AVAILABLE EVIDENCE OF THE POSITION OF THE ORIGINAL CORNERS. ALL DIFFERENCES BETWEEN THE MEASUREMENTS SHOWN ON THE ORIGINAL PLAT AND THOSE DERIVED IN THE RETIREMENT HAVE BEEN DISTRIBUTED PROPORTIONALLY BETWEEN ACCEPTED CORNERS IN ACCORDANCE WITH SURVEYING RULES. REFERENCE WILL BE MADE TO THE ORIGINAL PLAT FOR THE SHOWING OF AREAS AND MORE DETAILED DESCRIPTIONS OF THE VARIOUS SMALLER SUBDIVISIONS.

THE PLAT ALSO REPRESENTS THE SURVEY OF AN ISLAND IN LAKE ERYA IN SECTION 33, WHICH WAS NOT INCLUDED IN THE ORIGINAL SURVEY OF THE TOWNSHIP.

THE RESURVEY WAS EXECUTED PURSUANT TO AUTHORITY CONTAINED IN GENERAL LAND OFFICE LETTER 1676465 "C", DATED MARCH 23, 1937.

THE TOWNSHIP EMBRACED MOSTLY CUT-OVER LAND FROM WHICH THE ORIGINAL TIMBER GROWTH HAS BEEN REMOVED. THE PRESENT GROWTH CONSISTS LARGELY OF WHITE JACK PINE AND MAPLE BRUSH; EXTENSIVE AREAS IN THE CENTRAL PORTION OF THE TOWNSHIP HAVE BEEN REPLANTED WITH SEVERAL SPECIES OF PINE.

SCALE: 1 INCH EQUALS 40 CHAINS.

LINES DESIGNATED BY WHOM SURVEYED	GROUP NO.	SPECIAL INSTRUCTIONS	DATE OF WHEN SURVEYED	
			BEGUN	COMPLETED
EXTERIOR SUBDIVISIONAL MEANDER CONNECTION	OSCAR & WALSH DORVILLE S. SHEARER	44	APRIL 25, 1890.	AUGUST 23, 1890. OCTOBER 19, 1893.

UNITED STATES DEPARTMENT OF THE INTERIOR
GENERAL LAND OFFICE
DENVER, COLORADO, JANUARY 6, 1942.
THIS PLAT OF TOWNSHIP NO. 43 NORTH, RANGE NO. 18 WEST, OF THE MICHIGAN MERIDIAN, IS STRICTLY CONFORMABLE TO THE FIELD NOTES OF THE RESURVEY THEREOF, WHICH HAVE BEEN EXAMINED AND APPROVED.

[Signature]

WASHINGTON, D. C., MAY 3, 1940.
THE RESURVEY REQUESTED BY THIS PLAT, HAVING BEEN CORRECTLY EXECUTED IN ACCORDANCE WITH THE REQUIREMENTS OF LAW AND THE REGULATIONS OF THIS OFFICE, IS HEREBY ACCEPTED.

[Signature]
ASSISTANT COMMISSIONER