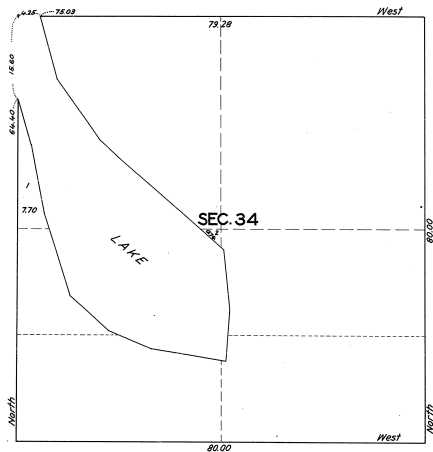


SUPPLEMENTAL PLAT OF SECTION 34,
TOWNSHIP NO. 1 NORTH, RANGE NO. 4 WEST OF THE MICHIGAN MERIDIAN, MICHIGAN.

Scale: 10 chains to an Inch.

5-40
②



DEPARTMENT OF THE INTERIOR
GENERAL LAND OFFICE

Washington, D.C., June 23, 1928.

This supplemental plat of Section 34, T. 1 N., R. 4 W., of the Michigan Meridian, Michigan, 1st plat approved Jan. 14, 1833, has been prepared for the purpose of providing a legal description and area for the NE 1/4 SW 1/4 east to the lake and for the fractional NE 1/4 SW 1/4 of said section not heretofore represented and having been properly prepared is hereby approved.

Wm. C. Howell
Assistant Commissioner.