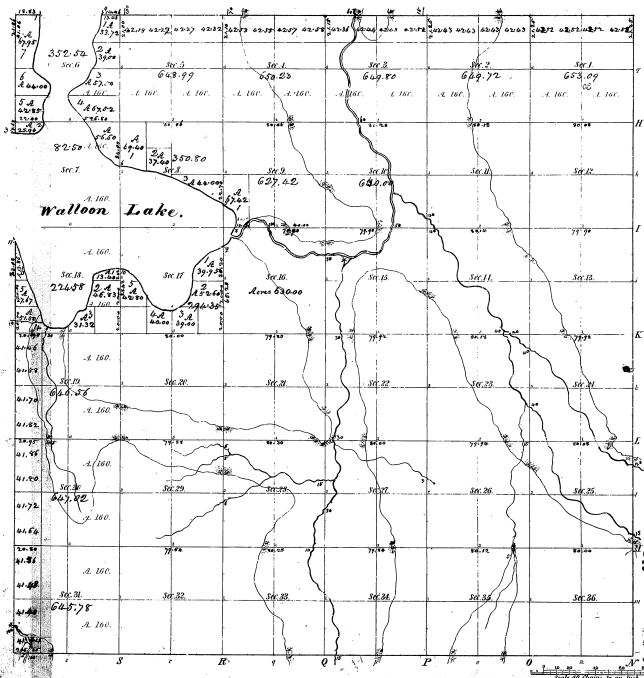


Township 1° 33' N Range 1° 5' W. Mich.



Section	Acres	Section	Acres
1	360.00	17	352.52
2	352.52	18	352.52
3	352.52	19	352.52
4	352.52	20	352.52
5	352.52	21	352.52
6	352.52	22	352.52
7	352.52	23	352.52
8	352.52	24	352.52
9	352.52	25	352.52
10	352.52	26	352.52
11	352.52	27	352.52
12	352.52	28	352.52
13	352.52	29	352.52
14	352.52	30	352.52
15	352.52	31	352.52
16	352.52	32	352.52
17	352.52	33	352.52
18	352.52	34	352.52
19	352.52	35	352.52
20	352.52	36	352.52

15, 16  
18-16

Total number of Acres 31, 693.40

Survey Original	By Whom Surveyed	Date of Contract	Amount of Survey	When Surveyed
Township	M. H. L. G.	18 1850	36 1850	36 1850
Subdivisions	C. H. Caldwell	6 1850	66 3 9 1851	6 9 1851

This is the Agent for Township 1° 33' N. of Range 1° 5' West of the Principal Meridian, Michigan, as finally determined by the field notes of the survey directed for by the officers, which have been examined and approved.

Surveyor General's Office  
Cincinnati, Dec. 24. 1851.

Spec. Gen.