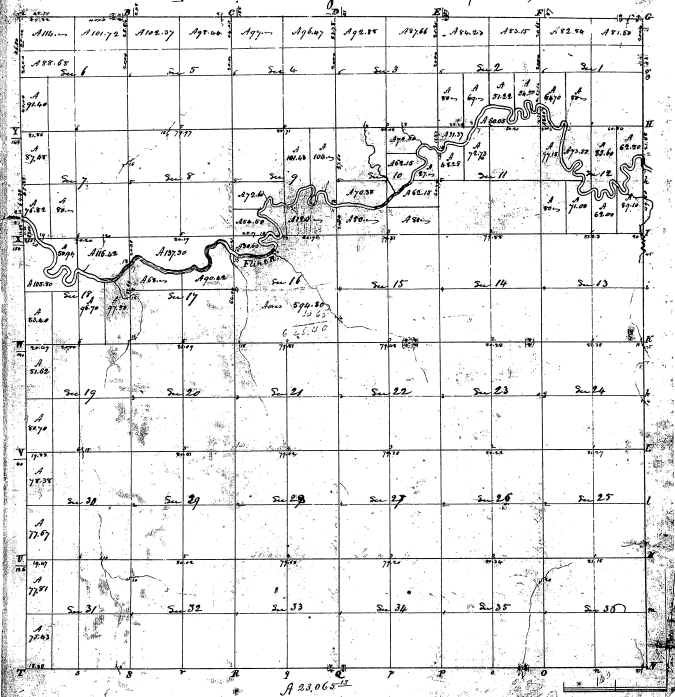


Township N. VIII North, Range N. VII East Mer. (Mich. Ter.)



Reference to a plat with one intention from Census Office buyers general of the United States, having seen the
 same measured and not one changed the clear boundary and as being that it was not
 and lands left natural and detached as are represented on said plat and described in the same area, being
 returned with the plat into the buyers general office. Witness the 20th day of April 1855.

J. H. Hambley, Secy.

28-12
 28-12