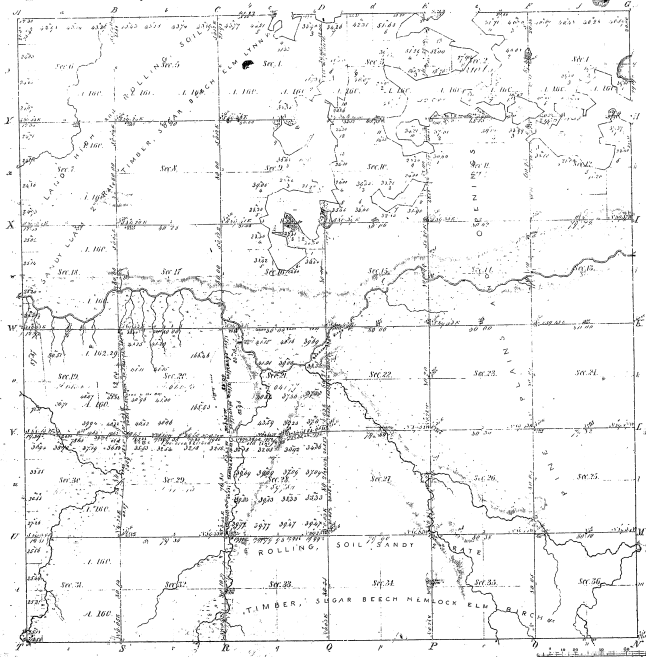


Re-survey.  
Township 1° 26' N Range 1° 10' W Mer. Mich.



Total number of Acres 24,511.65					
Acres surveyed	By whom surveyed	Date of survey	Amount of survey	When surveyed	By whom surveyed
1,000.00	John Smith	May 10 <sup>th</sup> 1855	1,000.00	1855	John Smith
1,000.00	John Smith	May 10 <sup>th</sup> 1855	1,000.00	1855	John Smith
1,000.00	John Smith	May 10 <sup>th</sup> 1855	1,000.00	1855	John Smith
1,000.00	John Smith	May 10 <sup>th</sup> 1855	1,000.00	1855	John Smith
1,000.00	John Smith	May 10 <sup>th</sup> 1855	1,000.00	1855	John Smith
1,000.00	John Smith	May 10 <sup>th</sup> 1855	1,000.00	1855	John Smith
1,000.00	John Smith	May 10 <sup>th</sup> 1855	1,000.00	1855	John Smith
1,000.00	John Smith	May 10 <sup>th</sup> 1855	1,000.00	1855	John Smith
1,000.00	John Smith	May 10 <sup>th</sup> 1855	1,000.00	1855	John Smith
1,000.00	John Smith	May 10 <sup>th</sup> 1855	1,000.00	1855	John Smith

The above map of Township 1° 26' N of Range 1° 10' W  
Houghton, Michigan & Michigan is a survey conformable to the field notes  
of the survey thereon on file in this Office, which have been examined and approved.  
Surveyor General's Office,  
Detroit, June 6, 1855.

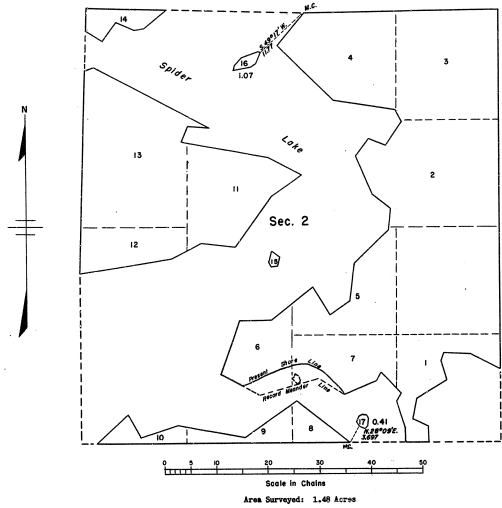
S. C. Chapman  
Surveyor

Sections of  
Twp. 26 N. R. 10 W. Mer. Mich.

16-193

TOWNSHIP 26 NORTH, RANGE 10 WEST, OF THE MICHIGAN MERIDIAN, MICHIGAN  
ISLAND SURVEYS, SECTION 2

16/19-2



This plat represents the survey of two islands in Spider Lake which were not included in the original survey of the Township as represented upon the plat approved November 4, 1851.

Survey executed by Hugh S. Crawford, Cadastral Engineer, from October 7 to 9, 1893, under Special Instructions for Group 69, dated June 5, 1893.

UNITED STATES DEPARTMENT OF THE INTERIOR  
BUREAU OF LAND MANAGEMENT  
Washington, D. C., August 11, 1894

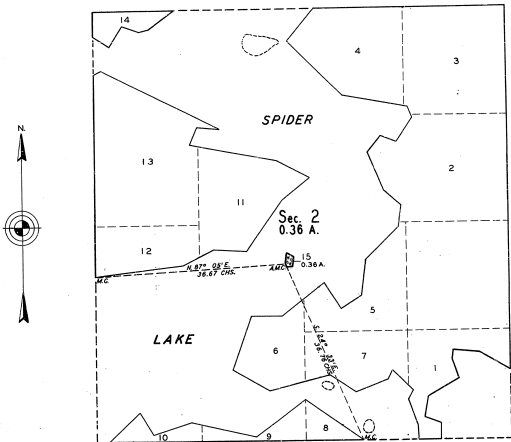
This plat is strictly conformable to the approved field notes, and the survey, having been correctly executed in accordance with the requirements of law and the regulations of this Bureau, is hereby accepted.

FOR THE DIRECTOR  
*Hugh S. Crawford*  
Cadastral Engineering Officer

TOWNSHIP NO. 26 NORTH, RANGE NO. 10 WEST, [REDACTED] MERIDIAN, MICHIGAN.

PLAT OF AN ISLAND IN SPIDER LAKE, SEC. 2.

16-19  
16-19-13



MEMORANDUM

THIS PLAT REPRESENTS THE SURVEY OF AN ISLAND IN SPIDER LAKE WHICH WAS NOT INCLUDED IN THE OFFICIAL RESURVEY OF THE TOWNSHIP, SHOWN UPON THE PLAT APPROVED NOVEMBER 4, 1855.

THE SURVEY WAS EXECUTED PURSUANT TO AUTHORITY CONTAINED IN GENERAL LAND OFFICE LETTER 1692705 \*M\* DATED AUGUST 13, 1936, WHICH BEARS DEPARTMENTAL APPROVAL UNDER DATE OF AUGUST 17, 1936.

SCALE: 10 CHAINS TO AN INCH. AREA SURVEYED: 0.36 ACRES.

LINES DESIGNATED	BY WHOM SURVEYED	GROUP NO.	DATE	MILEAGE M.S. CHS.	WHEN SURVEYED	
					BEGUN	COMPLETED
CONNECTING MEANDER	LESTER S. MANN	45	AUG. 25, 1936	0 75.43 0 7.52	SEPT. 6, 1936	SEPT. 6, 1936

OFFICE OF THE SUPERVISOR OF SURVEYS  
DENVER, COLORADO, OCTOBER 22, 1936

THE ABOVE PLAT OF AN ISLAND IN SPIDER LAKE, IN SECTION 2, TOWNSHIP NO. 26 NORTH, RANGE NO. 10 WEST, MICHIGAN MERIDIAN, MICHIGAN, IS STRICTLY CONFORMABLE TO THE FIELD NOTES OF THE SURVEY THEREOF, WHICH HAVE BEEN EXAMINED AND APPROVED.

*Wm. H. Duma*  
SUPERVISOR OF SURVEYS.

UNITED STATES  
DEPARTMENT OF THE INTERIOR  
GENERAL LAND OFFICE  
WASHINGTON, D.C., MARCH 16, 1939.

THE SURVEY REPRESENTED BY THIS PLAT, HAVING BEEN CORRECTLY EXECUTED IN ACCORDANCE WITH THE REQUIREMENTS OF LAW AND THE REGULATIONS OF THIS OFFICE, IS HEREBY ACCEPTED.

*Carl M. Fennell*  
ASSISTANT COMMISSIONER.