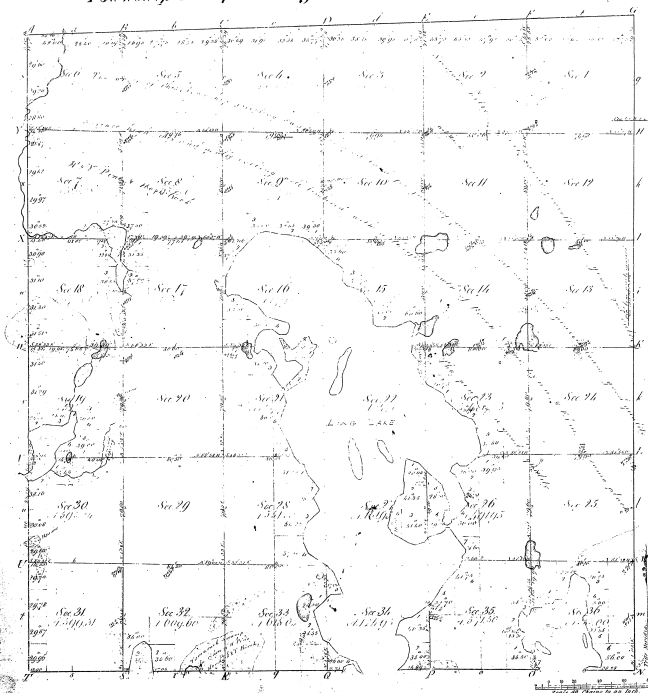


Re Survey
Township N^o 27 N. Range N^o 12 W. Mer. Mich



Monitors of
 Paul Jones 1812 Paul Jones 1812 Paul Jones 1812
 Act. The above property was surveyed and
 the parties of the several sections
 1812

16-16

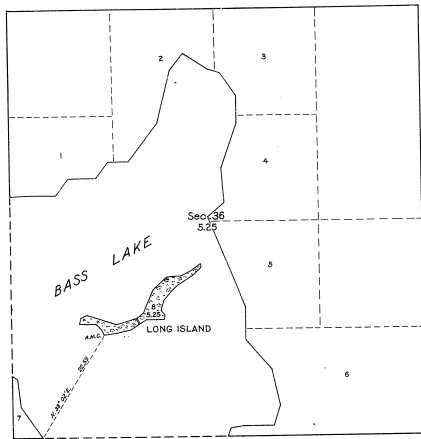
Total number of Acres 10,111.70

Survey Adjudged	By Whom Surveyed	Date of Convey.	Number of Acres	When Surveyed	When Adjudged
Paul Jones	Paul Jones	April 29, 1812	10,111.70	1812	1812
Lucas & Zyon	Lucas & Zyon	April 29, 1812	76.72	1812	1812
Lucas & Zyon	Lucas & Zyon	April 29, 1812	76.72	1812	1812

The above Map of Township N^o 27 N. Range N^o 12 W. Mer. Mich.
 is a duly registered and approved
 map of the land in this office which has been examined and approved
 Surveyor General Office
 Detroit July 31 1812
 Charles Miller Secy

TOWNSHIP No. 27 NORTH, RANGE No. 12 WEST, OF THE MICHIGAN MERIDIAN, MICHIGAN
 PLAT OF AN ISLAND IN BASS LAKE, SECTION 36

16-16
 16-16



MEMORANDUM.
 THIS PLAT REPRESENTS THE SURVEY OF AN ISLAND IN BASS LAKE WHICH WAS NOT INCLUDED IN THE ORIGINAL SURVEY OF THE TOWNSHIP AS SHOWN UPON THE PLAT APPROVED JULY 31, 1851. THE SURVEY WAS EXECUTED PURSUANT TO AUTHORITY CONTAINED IN GENERAL LAND OFFICE LETTER 115423 "C", DATED DECEMBER 20, 1930, WHICH BEARS DEPARTMENTAL APPROVAL UNDER DATE OF DECEMBER 22, 1930.

OFFICE OF U.S. SUPERVISOR OF SURVEYS
 DENVER, COLORADO, MARCH 25, 1932.

THE ABOVE PLAT OF AN ISLAND IN BASS LAKE, IN SECTION 36, TOWNSHIP NO. 27 NORTH, RANGE NO. 12 WEST, MICHIGAN MERIDIAN, MICHIGAN, IS STRICTLY CONFORMABLE TO THE FIELD NOTES OF THE SURVEY THEREOF WHICH HAVE BEEN EXAMINED AND APPROVED.

Stanley P. Simon
 U.S. SUPERVISOR OF SURVEYS.

DEPARTMENT OF THE INTERIOR
 GENERAL LAND OFFICE
 WASHINGTON, D.C., APRIL 19, 1932.

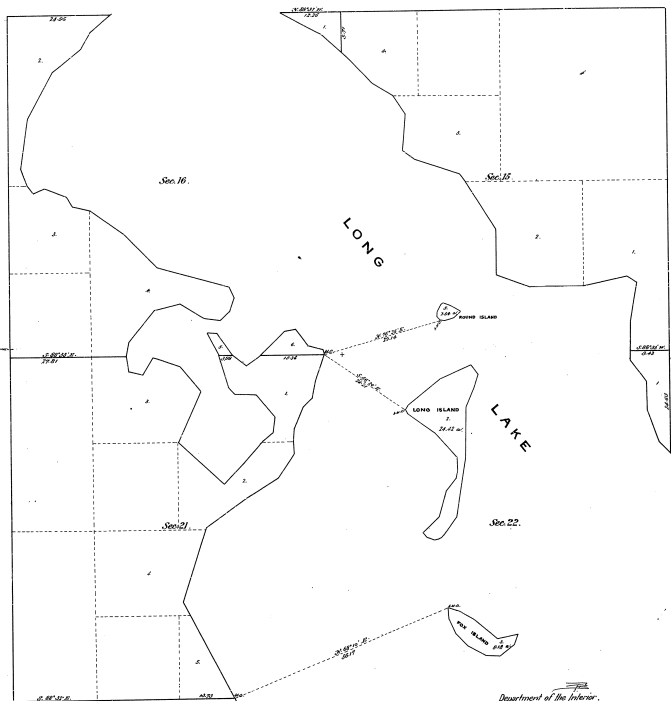
THE SURVEY REPRESENTED BY THIS PLAT HAVING BEEN CORRECTLY EXECUTED IN ACCORDANCE WITH THE REQUIREMENTS OF LAW AND THE REGULATIONS OF THIS OFFICE, IS HEREBY ACCEPTED.

John C. Merrill
 ASSISTANT COMMISSIONER.

SCALE: 10 CHAINS TO AN INCH AREA SURVEYED: 5.25 ACRES

LINES DESIGNATED	BY WHOM SURVEYED	GROUP NO.	DATE	MILEAGE		WHEN SURVEYED	
				MLS.	CHS.	BEGUN	COMPLETED
CONNECTION MEANDER	GUY R. VEAL, U.S.C. ENGINEER	23	MAY 6,	0	22.59	JUNE 12,	JUNE 13,
			1931.	0	61.93	1931.	1931.

PLAT of Three Islands in Long Lake
in Sections 35 and 22, T₂ 27 N. R. 12 West, Mich. Mer., Michigan.
Surveyed by Calvin P. Teller, U.S. Deputy Surveyor.
January 28th to February 5th 1863, under special instructions from the Genl. Land Office dated Dec. 17th 1861.
Scale 40 els = 1 inch.



Department of the Interior.
 General Land Office,
 Washington, D.C., Oct. 19, 1863.

The above plat of three islands in Long Lake, in Sections 35 and 22, T₂ 27 N., R. 12 West, Michigan Meridian, Michigan, is a correct plat of a survey executed by Calvin P. Teller, U.S. Deputy Surveyor, in pursuance of special instructions from the Commissioner of the General Land Office, bearing date December 17, 1861, and is hereby conformable to the field notes thereof, on file in this office, which have been examined and approved.

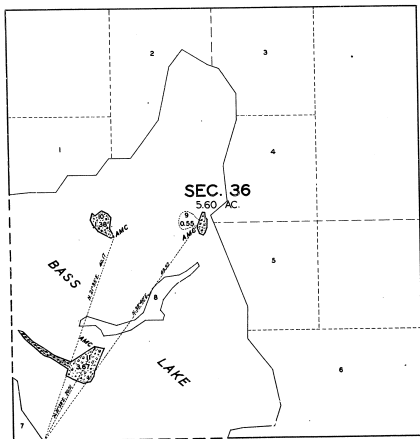
M. A. Richard
 Commissioner and ex-officio
 Surveyor General for Michigan.

16-16
 16-16

TOWNSHIP NO. 27 NORTH, RANGE NO. 12 WEST, OF THE MICHIGAN MERIDIAN, MICHIGAN.

PLAT OF THREE ISLANDS IN BASS LAKE, SECTION 36.

16-16
 16-16 (5)
 91-91



MEMORANDUM

THIS PLAT REPRESENTS THE SURVEY OF THREE ISLANDS IN BASS LAKE WHICH WERE NOT INCLUDED IN THE ORIGINAL SURVEY OF THE TOWNSHIP AS REPRESENTED ON THE PLAT APPROVED JULY 31, 1851.

THE SURVEY WAS EXECUTED PURSUANT TO AUTHORITY CONTAINED IN GENERAL LAND OFFICE LETTER 1158208 "M" DATED MAY 18, 1932, WHICH BEARS DEPARTMENTAL APPROVAL UNDER DATE OF MAY 16, 1932.

OFFICE OF U.S. SUPERVISOR OF SURVEYS
 DENVER, COLORADO, MAY 1, 1933.

THE ABOVE PLAT OF THREE ISLANDS IN BASS LAKE IN SECTION 36, TOWNSHIP NO. 27 NORTH, RANGE NO. 12 WEST, OF THE MICHIGAN MERIDIAN, MICHIGAN, IS STRICTLY CONFORMABLE TO THE FIELD NOTES OF THE SURVEY THEREOF WHICH HAVE BEEN EXAMINED AND APPROVED.

Arthur H. Hanson
 U.S. SUPERVISOR OF SURVEYS.

SCALE: 10 CHAINS TO AN INCH.

AREA SURVEYED: 5.60 ACRES

LINES DESIGNATED	BY WHOM SURVEYED	GROUP NO.	DATE	MILEAGE		WHEN SURVEYED	
				MLS.	CHS.	BEGUN	COMPLETED
CONNECTIONS	GUY R. VEAL, U.S. SURVEYOR	23	JULY 8 1932.	1	30.10	OCTOBER 11, 1932.	OCTOBER 11, 1932.
MEANDERS				0	69.58		

DEPARTMENT OF THE INTERIOR
 GENERAL LAND OFFICE
 WASHINGTON, D.C., JUNE 2, 1933.

THE SURVEY REPRESENTED BY THIS PLAT HAVING BEEN CORRECTLY EXECUTED IN ACCORDANCE WITH THE REQUIREMENTS OF LAW AND THE REGULATIONS OF THIS OFFICE, IS HEREBY ACCEPTED.

J. H. ...
 ACTING ASSISTANT COMMISSIONER.