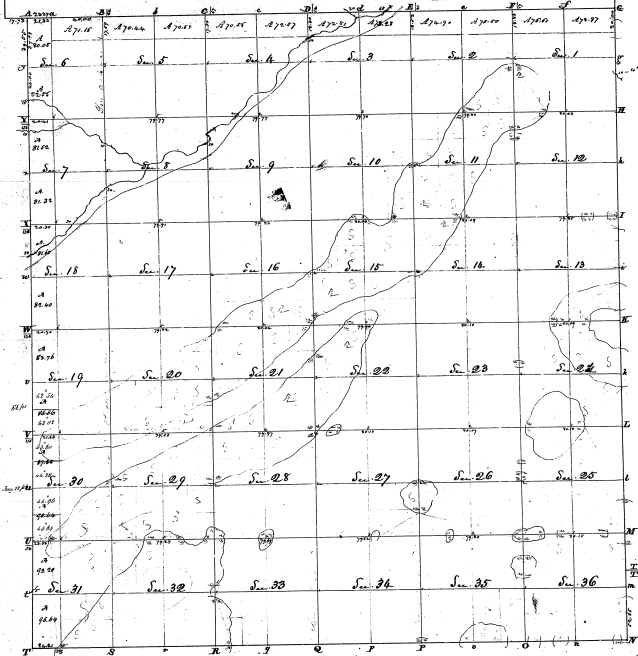


Township N. 1 North, Range N. 1 West Mer. (All. Ter.)



36	175	77	6 1/2 - 19	320
35	170	76	1/4 -	31 1/2
34	165	75	3/4 -	600
33	160	74	Sum 20	28
32	155	73	1/2 -	600
31	150	72	1/2 -	600
30	145	71	1/2 -	600
29	140	70	1/2 -	600
28	135	69	1/2 -	600
27	130	68	1/2 -	600
26	125	67	1/2 -	600
25	120	66	1/2 -	600
24	115	65	1/2 -	600
23	110	64	1/2 -	600
22	105	63	1/2 -	600
21	100	62	1/2 -	600
20	95	61	1/2 -	600
19	90	60	1/2 -	600
18	85	59	1/2 -	600
17	80	58	1/2 -	600
16	75	57	1/2 -	600
15	70	56	1/2 -	600
14	65	55	1/2 -	600
13	60	54	1/2 -	600
12	55	53	1/2 -	600
11	50	52	1/2 -	600
10	45	51	1/2 -	600
9	40	50	1/2 -	600
8	35	49	1/2 -	600
7	30	48	1/2 -	600
6	25	47	1/2 -	600
5	20	46	1/2 -	600
4	15	45	1/2 -	600
3	10	44	1/2 -	600
2	5	43	1/2 -	600
1	0	42	1/2 -	600
Sum			10 9/16 - 18	10 9/16 18
			Sum	10 9/16 18
				10 9/16 18

Surveyed in May 1831 by Robert Thomas, S.S.
 The above map of Township N. 1 North, Range N. 1 West Mer. (All. Ter.) is strictly conformable to the field notes of which there are files in this office, which have been examined & approved by the General Land Office.
 Witness my hand & seal this 6th day of June 1831.
 J. J. Williams
 Surveyor General

5-4