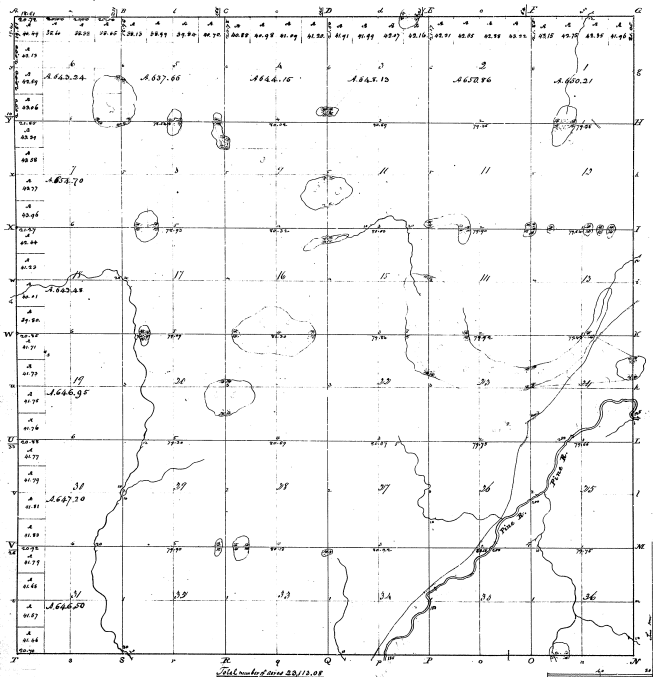


Township N. 12 E. Range N. 11 W. Mer. (M. S. J.)

13-35

13-35



Original
 Survey conducted by Richard del. to the State of Michigan in 1850
 Town bounded by Clark 17 Apr 1850
 del. to the State of Michigan in 1850
 del. to the State of Michigan in 1850

This above map of Township N. 12 E. Range N. 11 W. Michigan Territory is strictly conformable to the State title of the Survey taken on file in the office which has been examined and approved.

Surveyor General's Office
 Christmas, Dec. 24, 1850
 J. M. T. Sullivan
 Secy.