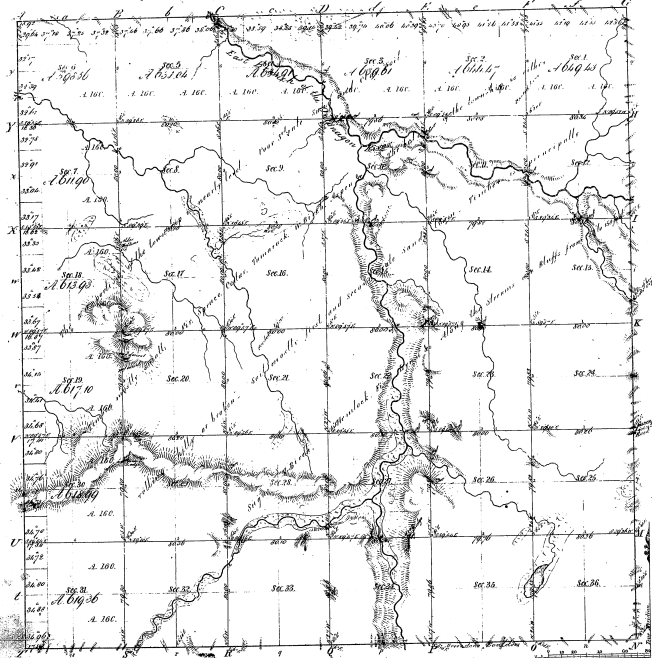


Township 1° 47' N. Range 1° 37' W. Mec. Michigan



Meandered of
 State Course 1844, Field Course 1844, Field Course 1844

43-14

43-14

Total number of Acres 22,570.30

Survey Designated	By Whom Surveyed	Date of Contract	Amount of Survey	When Surveyed
Township 1st	M. S. & C. S. & P. S.	22 May 1847	22,570.30	1st June 1847

The above Map of Township 1° 47' North of Range 1° 37' West of the Principal Meridian (North 89° 25' 30" W. 1847) is strictly conformable to the field notes of the survey thereof on file in this Office, which have been examined and approved.

Surveyor General's Office
 Detroit, Jan. 22, 1850
 Charles K. Miller
 Sur: Genl.