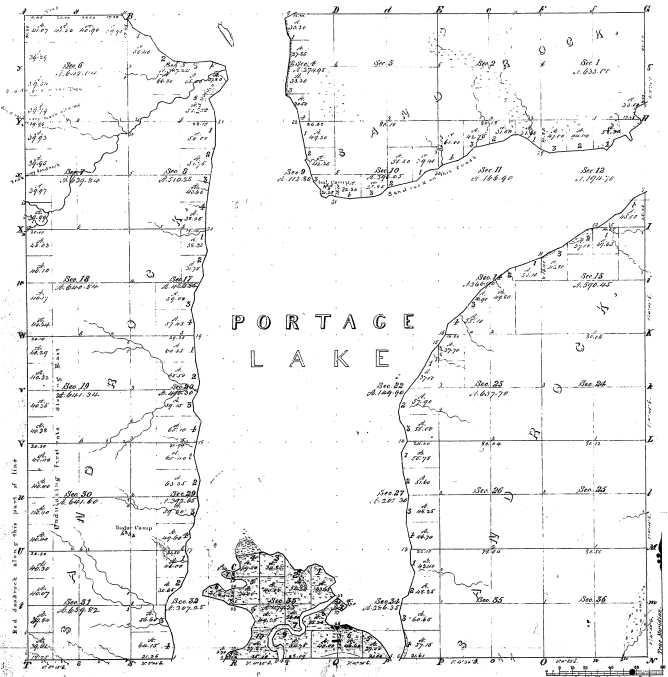


Township N.º 54 N. Range N.º 55 W. Mer. Mich.

574.33



Boundaries of			
Paul	Conroy	W. H. L.	W. H. L.
41			
41			

PORTAGE
LAKE

Total number of Acres 15752.63

Survey Disposed	By Whom Surveyed	Date of Conveyance	Amount of Survey in Acres	When Surveyed	When Closed in the Survey
Portage Lake	Wm. A. Kilmer	June 25, 1850	61.64 51	57 ¹ / ₂ 1848	
Subdivisions	D. Bevington			57 ¹ / ₂ 1848	

The above Map of Township N.º 54 North, of Range 01st 55 West of the Principal Meridian, Michigan, is hereby certified to be the first series of the survey thereof on file in the Office, which have been examined and approved.

Surveyor General's Office,
Detroit, May 8, 1886

Lucius Lyon, Surveyor General