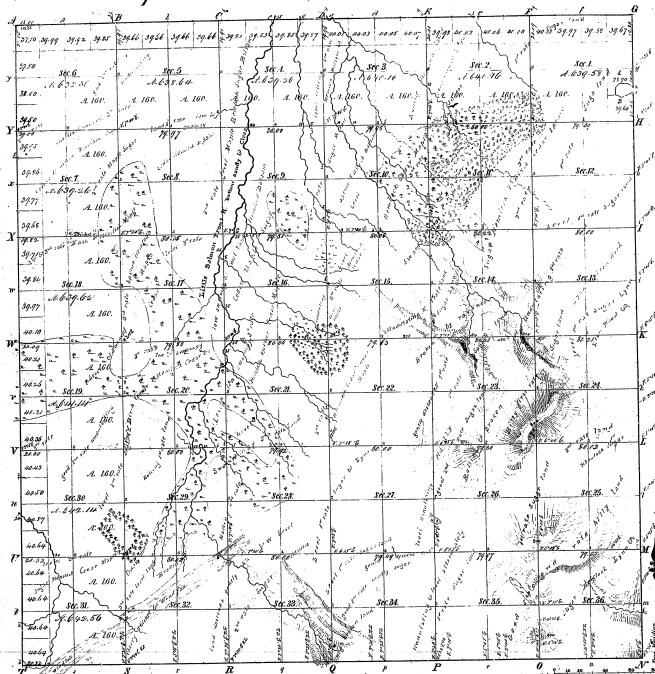


Township 1° 54' N. Range 1° 55' W. Mer. Mich.



Abstracts of

Page	Volume	Page	Volume	Page	Volume
41	11				

Total number of Acres 25034.98

Survey Described	By Whom Surveyed	Date of Contract	Amount of Survey	When Surveyed	How far the land is in the Section
Township 1° 54' N. Range 1° 55' W.	John A. D. D. D.	Apr. 21, 1861	25,034.98	1861	1/2
Subdivisions	John A. D. D. D.	Apr. 22, 1861	64,341.82	1861	1/2

The above Map of Township 1° 54' North, of Range 1° 55' West of the Principal Meridian Michigan, is strictly conformable to the field notes of the survey thereof on file in this Office, which have been examined and approved.

Surveyor General's Office
 Detroit, Oct. 16, 1867
 Lewis Hays, Surveyor