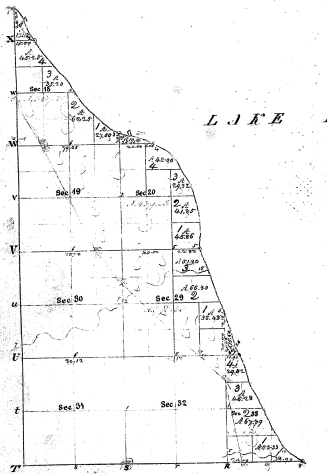


25-1

Amount of	
Lab. Notes	
Page	Containing
1	100 to 200
1	200 to 300
1	300 to 400
1	400 to 500
1	500 to 600
1	600 to 700
1	700 to 800
1	800 to 900
1	900 to 1000
1	1000 to 1100
1	1100 to 1200
1	1200 to 1300
1	1300 to 1400
1	1400 to 1500
1	1500 to 1600
1	1600 to 1700
1	1700 to 1800
1	1800 to 1900
1	1900 to 2000



LAKE HURON.

10000
10000

This on a plan of Section 19, 20, 21, 22, 23, 24, 25, 26, 27, 28, 29, 30, 31, 32, 33, 34, 35, 36, 37, 38, 39, 40, 41, 42, 43, 44, 45, 46, 47, 48, 49, 50 of the Principal Meridian, the Tor. is strictly conformable to the Field Note of the Survey thereof on file in this Office, which have been examined and approved by the Survey General's Office, Cincinnati.

C. B. G. by the 16