

Township N° 19 N., Range N° 12 E. Mer. Mich.

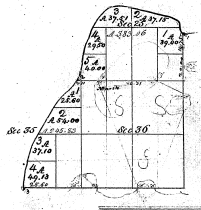
WV

120

Abstract of		
Municipal Reg.		
Dist.	Amount	Due
3	17.25	17.25
	37.50	37.50
2	17.25	17.25
	37.50	37.50
	17.25	17.25
	37.50	37.50
	17.25	17.25
	37.50	37.50
	17.25	17.25
	37.50	37.50
	17.25	17.25
	37.50	37.50
	17.25	17.25
	37.50	37.50

32-20

S A G I N A W B A Y .



Total number of acres 6,683.47

Township	Range	Section	Acres
19 N.	12 E.	1	172.50
19 N.	12 E.	2	172.50
19 N.	12 E.	3	172.50
19 N.	12 E.	4	172.50
19 N.	12 E.	5	172.50
19 N.	12 E.	6	172.50
19 N.	12 E.	7	172.50
19 N.	12 E.	8	172.50
19 N.	12 E.	9	172.50
19 N.	12 E.	10	172.50
19 N.	12 E.	11	172.50
19 N.	12 E.	12	172.50
19 N.	12 E.	13	172.50
19 N.	12 E.	14	172.50
19 N.	12 E.	15	172.50
19 N.	12 E.	16	172.50
19 N.	12 E.	17	172.50
19 N.	12 E.	18	172.50
19 N.	12 E.	19	172.50
19 N.	12 E.	20	172.50

The above Map of Township N° 19 North of Range N° 12 East of the Principal Meridian, Mic. Sec. is strictly conformable to the State Data of the Survey, and is hereby approved, which have been examined and approved.

Surveyor General's Office  
 Cincinnati

Wm. H. Lytle Jr.

2 Copies