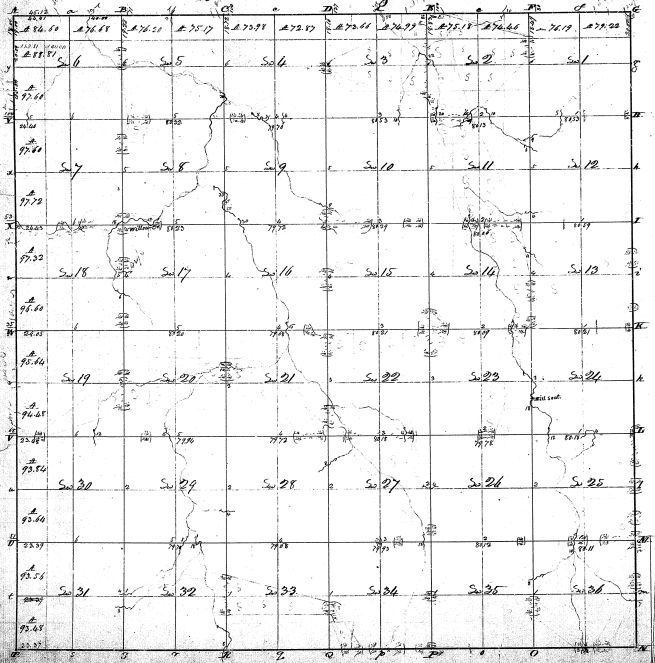


Township (N. II) and Range (E. I) west (cont. Sec.)



5-36

2

5-36

Section	Area	Part Cont.	Area
1	36.00		36.00
2	36.00		36.00
3	36.00		36.00
4	36.00		36.00
5	36.00		36.00
6	36.00		36.00
7	36.00		36.00
8	36.00		36.00
9	36.00		36.00
10	36.00		36.00
11	36.00		36.00
12	36.00		36.00
13	36.00		36.00
14	36.00		36.00
15	36.00		36.00
16	36.00		36.00
17	36.00		36.00
18	36.00		36.00
19	36.00		36.00
20	36.00		36.00
21	36.00		36.00
22	36.00		36.00
23	36.00		36.00
24	36.00		36.00
25	36.00		36.00
26	36.00		36.00
27	36.00		36.00
28	36.00		36.00
29	36.00		36.00
30	36.00		36.00
31	36.00		36.00
32	36.00		36.00
33	36.00		36.00
34	36.00		36.00
35	36.00		36.00
36	36.00		36.00
Total	1296.00		1296.00

Surveyed in March 1856 by Henry Parks D.S.