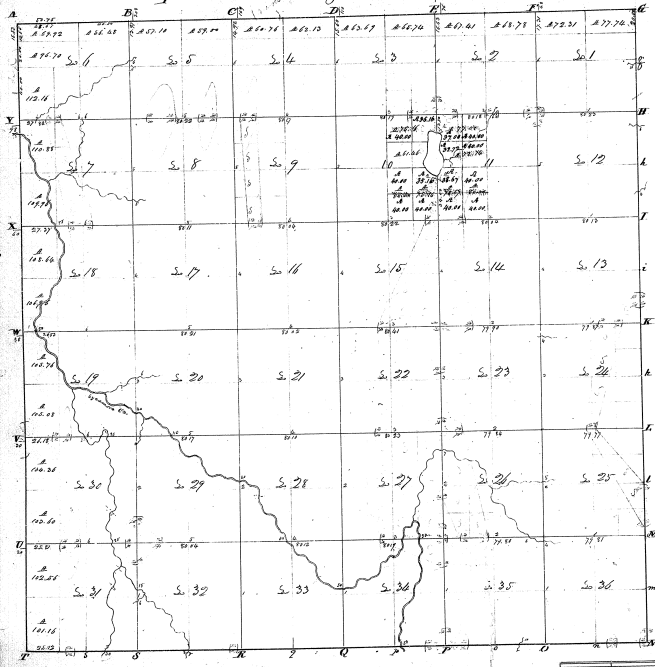


Township N. III and Range N. I West (cont'd, Sec)



Surveyed in Section 1888 by Angus Coan

Ac. of B	1	77	70	6.	18	320
Ac. of B	2	77	70	6.	18	320
Ac. of B	3	77	70	6.	18	320
Ac. of B	4	77	70	6.	18	320
Ac. of B	5	77	70	6.	18	320
Ac. of B	6	77	70	6.	18	320
Ac. of B	7	77	70	6.	18	320
Ac. of B	8	77	70	6.	18	320
Ac. of B	9	77	70	6.	18	320
Ac. of B	10	77	70	6.	18	320
Ac. of B	11	77	70	6.	18	320
Ac. of B	12	77	70	6.	18	320
Ac. of B	13	77	70	6.	18	320
Ac. of B	14	77	70	6.	18	320
Ac. of B	15	77	70	6.	18	320
Ac. of B	16	77	70	6.	18	320
Ac. of B	17	77	70	6.	18	320
Ac. of B	18	77	70	6.	18	320
Ac. of B	19	77	70	6.	18	320
Ac. of B	20	77	70	6.	18	320
Ac. of B	21	77	70	6.	18	320
Ac. of B	22	77	70	6.	18	320
Ac. of B	23	77	70	6.	18	320
Ac. of B	24	77	70	6.	18	320
Ac. of B	25	77	70	6.	18	320
Ac. of B	26	77	70	6.	18	320
Ac. of B	27	77	70	6.	18	320
Ac. of B	28	77	70	6.	18	320
Ac. of B	29	77	70	6.	18	320
Ac. of B	30	77	70	6.	18	320
Ac. of B	31	77	70	6.	18	320
Ac. of B	32	77	70	6.	18	320
Ac. of B	33	77	70	6.	18	320
Ac. of B	34	77	70	6.	18	320
Ac. of B	35	77	70	6.	18	320
Ac. of B	36	77	70	6.	18	320
Total		1331	72			4224
		1329	67			4224

5-29