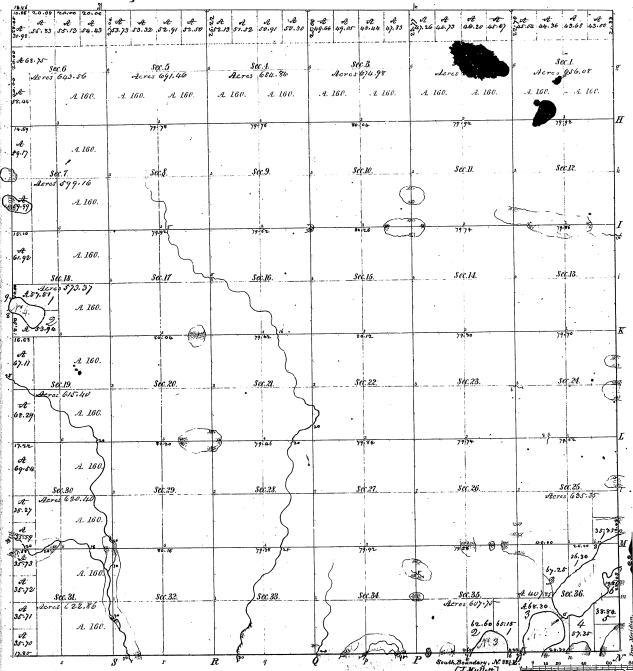


Resurvey
Township 1° 23' N. Range N° 6 East Mer.



Total number of Acres 20,713.24

Survey Designated	By Whom Returned	Date of Contract	Amount of Survey	When Returned
Township - Done	Thomas A. Haden	July 10, 1857	20,713.24	1. 30. 1857
Subdivisions	Prof. A. Haden	Oct. 19, 1857	68.68 52 62 7	1858

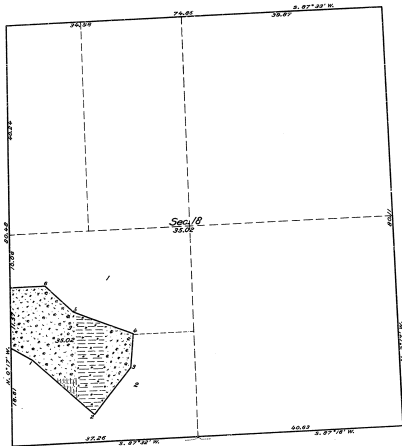
The above Map of Township 1° 23' N. of Range N° 6 East of the Principal Meridian, Michigan, is hereby conformable to the field notes of the survey thereof, and the officers who have examined and approved.

Surveyor General's Office
Cantonville, Feb. 15, 1865

Meanders of	
Partial Courses	Partial Courses
<p>31</p>	<p>22-31</p>

Supplemental Plat of Sec. 18, T. 23 N., R. 6 E., Mich. Mer., Michigan.

22-31
22-31 (S)



MEMORANDUM.

This plat is based upon a reestablishment of the lines defining the lands in Section 18, Township 23 North, Range 6 East, Michigan Meridian, Michigan, as shown upon the original plat approved February 16, 1845, and an extension survey including lands not shown upon said plat.

The original lines have been identified and the corners reannounced with iron posts having brass caps suitably marked. Titles and areas based upon the original approved plat remain undisturbed for position and descriptions.

The heavy irregular line delineates the position of the meander line of a lake, erroneously shown as being in Section 18; Riparian rights, under the usual doctrine, do not attach to the lands in front of this meander line. This meander line has been reestablished as a fixed boundary, with adjusted courses and distances based upon the record of the original survey.

LEGEND.

Scale: 1 inch = 10 chains.

Surveyed by Hal D. Craig, U. S. Surveyor, on November 10 and 11, 1905, under supplemental special instructions for Group No. 5, Michigan, dated August 5, 1905, issued by Arthur D. Kidder, Associate Supervisor of Surveys, which were approved by the Commissioner of the General Land Office on August 12, 1905.

Area of Lands surveyed = 75.02 Acres, not shown upon the plat approved February 16, 1845, and January 23, 1905.
Areas of previously surveyed lands not shown.

Office of U. S. Supervisor of Surveys.
Denver, Colorado, August 18, 1906.

The above supplemental plat of Section 18, Township 23 North, Range 6 East, of the Michigan Meridian, in the State of Michigan, is strictly conformable to the field notes of the survey thereof, which have been examined and approved.

Samuel Dawson
U. S. Supervisor of Surveys.

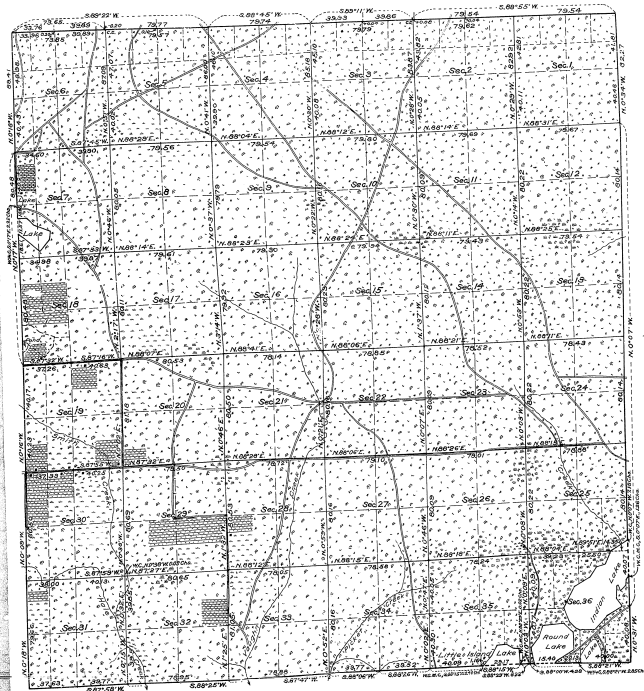
DEPARTMENT OF THE INTERIOR
GENERAL LAND OFFICE.

Washington, D. C., January 26, 1907.

The survey represented by this plat, having been correctly executed in accordance with the requirements of law and the regulations of this office, is hereby accepted.

D. T. Bennett
Acting Assistant Commissioner.

RESURVEY PLAT
OF
T. 25 N., R. 6 E., Mich. Mer.
MICHIGAN.



MEMORANDUM.

This plat of the resurvey of T. 25 N., R. 6 E., of the Michigan Meridian, Michigan, delineates a retracement and re-establishment of the lines of the original survey of the township as shown upon the plat approved February 16, 1854, in their true original positions according to the best available evidence of the position of the original plat and those derived in the retracement have been distributed proportionally between accepted corners in accordance with surveying rules.

The Lake shown on the original plat of the township as in Section 18, actually occupies a corresponding position in Section 1, and as so noted in the original field notes of the west boundary of the township.

LEGEND.

Scale: 1 inch = 40 chains.

Surveyed by Guy E. Veal, U. S. Cadastral Engineer, from July 16 to September 6, 1923, inclusive, under special instructions for Group No. 6, Michigan, dated April 6, 1923, issued by the Commissioner of the General Land Office.

The undersigned hereby certifies that the resurvey delineated upon this plat has been executed under his general direction and in accordance with the special instructions, issued pursuant to authority contained in office letter 1024047 P. A. D. K., dated April 6, 1923, and that the field notes and the plat of the resurvey have been carefully verified.

Denver, Colorado,
August 28, 1924.

William J. Jones
Supervisor of Surveys.

Department of the Interior, 7740
General Land Office.

Washington, D. C., January 21, 1925.

The above plat of the resurvey of Township 25 North, Range 6 East, of the Michigan Meridian, in the State of Michigan, is strictly conformable to the field notes of the resurvey thereof, on file in this office, which have been examined and approved.

William J. Jones
Commissioner and ex officio
U. S. Survey General for Michigan.

22-31¹⁹