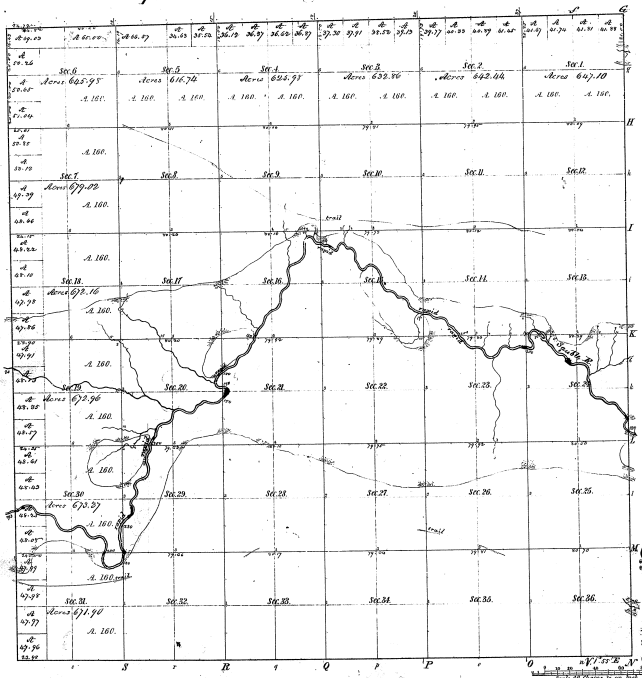


Re-Survey
Township N^o 24 N Range N^o 7 East Mer.



Mileage of			
North Course	West	South Course	East
27-27			
B2-27			

Surveys designated	By Whom Surveyed	Date of Contract	Total number of Acres 23,117.51		
			Amount of Surveys	When Surveyed	When 1/2 or more of the Section Surveyed
Principal Surveys	John A. Wallace	July 16 th 1857	24,211.51	2-27-1858	15-2-1859
Subdivisions	John A. Wallace	Feb 17 th 1866	66.15.22	4-27-1866	

The above Map of Township N^o 24 North of Range N^o 7 East of the Principal Meridian North-pole is a correct copy of the original of the survey being on file in this office, which has been examined and approved.

Surveyor General's Office
Cincinnati, January 4th 1864

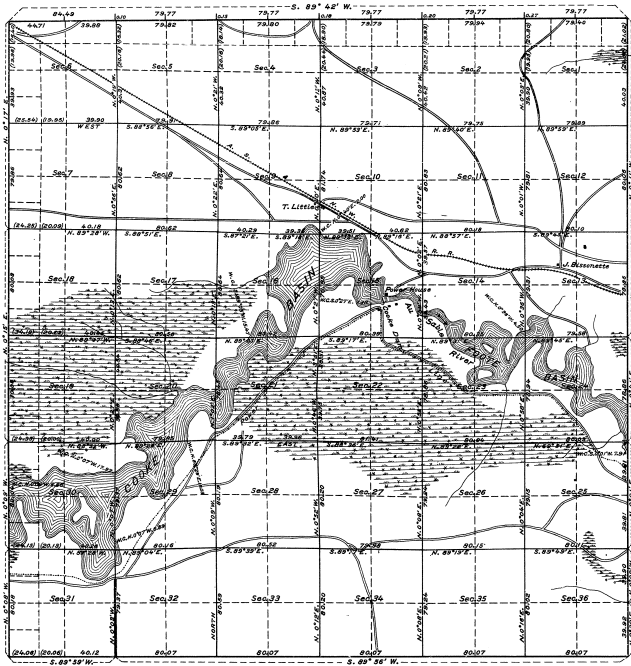
William Johnston
Surveyor

TOWNSHIP N^o 24 NORTH, RANGE N^o 7 EAST OF THE MICHIGAN MERIDIAN, MICHIGAN.

DEPENDENT RESURVEY.

23-27-22

22-27



MEMORANDUM.

THIS PLAT OF THE RESURVEY OF TOWNSHIP 24 NORTH, RANGE 7 EAST, MICHIGAN MERIDIAN, MICHIGAN, DELINEATES A RETRACEMENT AND REESTABLISHMENT OF THE LINES OF THE ORIGINAL SURVEY AS SHOWN UPON THE PLAT APPROVED FEBRUARY 11, 1845, IN THEIR TRUE ORIGINAL POSITIONS ACCORDING TO THE BEST AVAILABLE EVIDENCE OF THE POSITION OF THE ORIGINAL CORNERS. ALL DIFFERENCES BETWEEN THE MEASUREMENTS SHOWN ON THE ORIGINAL PLAT AND THOSE DERIVED IN THE RETRACEMENT HAVE BEEN DISTRIBUTED PROPORTIONALLY BETWEEN ACCEPTED CORNERS IN ACCORDANCE WITH SURVEYING RULES. REFERENCE WILL BE MADE TO THE ORIGINAL PLAT FOR THE SHOWING OF AREAS OF THE VARIOUS SUBDIVISIONS.

THE UPLAND IN THIS TOWNSHIP HAS A SCATTERING GROWTH OF JACK PINE AND BLACK OAK, OF LITTLE VALUE. IN THE SWAMPS THERE IS A FAIR GROWTH OF CEDAR, TAMARACK, SPRUCE AND POPLAR, OF LITTLE VALUE.

Mean Magnetic Declination,

Scale: 40 Chains to an Inch.

Area Surveyed,

Acres.

LINES DESIGNATED	BY WHOM SURVEYED	GROUP NO.	DATE	MILEAGE M.S. CHS.	WHEN SURVEYED BEGUN COMPLETED
Exterior	BUY R. VEAL			12 1.50	
Subdivisional	D. S. C. ENGINEER		MAY 13,	60 14.44	JUNE 11, AUG. 23,
Meander	W. W. BANDY	14	1907-		1907- 1907-
Miscellaneous	U. S. SURVEYOR.				

Office of U. S. Supervisor of Surveys.

Denver, Colorado, Feb. 8, 1929.

The above plat of Township No. 24 North, Range No. 7 East, of the Michigan Meridian, Michigan, is strictly conformable to the field notes of the survey thereof which have been examined and approved.

DEPARTMENT OF THE INTERIOR.

GENERAL LAND OFFICE.

Washington, D. C., May 9, 1928.

The survey represented by this plat, having been correctly executed in accordance with the requirements of law and the regulations of this office, is hereby accepted.

[Signature]
U. S. Surveyor

[Signature]
Acting Assistant Commissioner

730