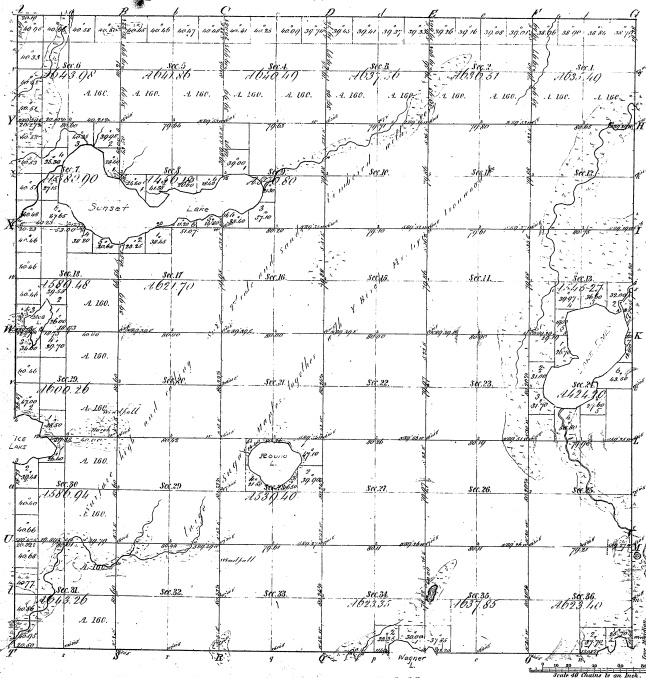


Township 1° 43' N. Range 1° 34' W. Mer. Mich.



Boundaries of
 Public Lands - 1812
 Dutch Grants - 1812
 Dutch Grants - 1812

44-32

Boundaries of
 11 18 19

44-32

Total number of Acres 21918.88

| Survey Designated | By Whom Surveyed | Date of Contract | Amount of Survey | When Surveyed | Whether for and sold to the Gov. or not |
|-------------------|------------------------|------------------|------------------|---------------|---|
| Ownership lines | W. C. & S. W. C. & Co. | Sept. 17, 1846 | R. 26 1/2 | 1846 | |
| Subdivisions | Wm. H. Condit | April 22, 1851 | 71 22 3/4 | 1851 | |

The above map of Township 1° 43' N. Range 1° 34' W. Mer. Mich. of the
 General Land Office is hereby approved to the full extent
 of the survey thereof and the title of the same is hereby confirmed and approved.
 George S. Smith, Surveyor General
 Detroit July 22, 1852 Charles Kettle, Secy. Genl.