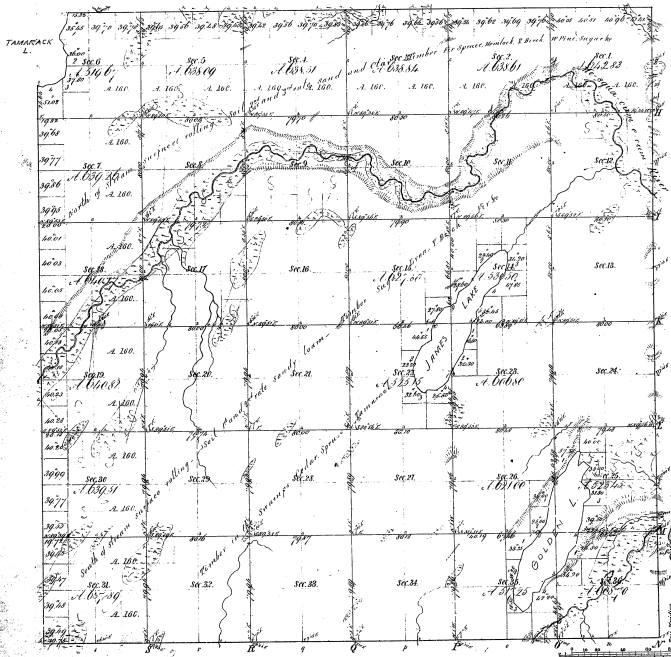


Township 1° 46' N. Range 1° 27' W. Mec. Mich.



Meadow of			
East Course (242)	West Course (242)	East Course (242)	West Course (242)
43-33			
Meadow 1. 15 36			

43-33

Total number of acres 22,354.61					
Survey designated	By Whom Surveyed	Date of Contract	Amount of Survey	When Surveyed	When of 100 and 125 Acres
Township lines	W. A. Hilditch	April 27 1855	36, 38, 46	1855	
Subdivisions	Blackwell	May 24 1857	65, 68, 74	1857	

The above Map of Township 1° 46' North of Range 1° 27' West of the Principal Meridian all Michigan is hereby confirmed to the full value of the survey thereon on file in this Office which have been examined and approved.

Surveyor General's Office
 Detroit June 23 1858
 Charles Allen
 Sur.