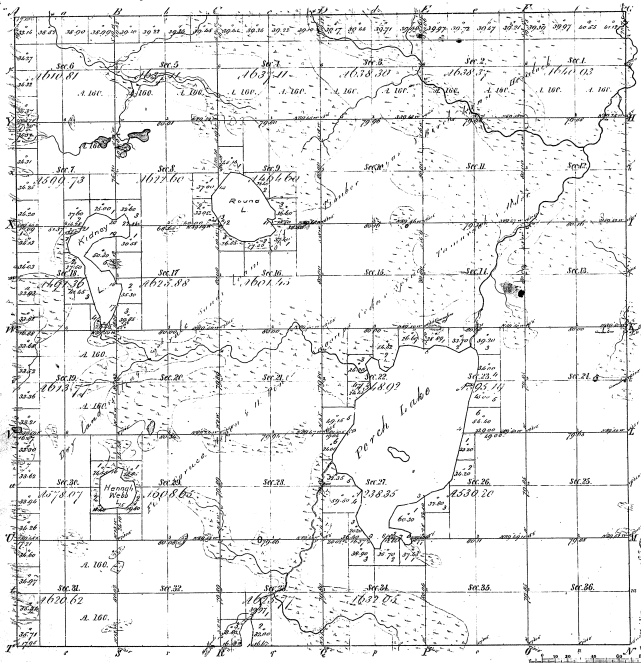


Township 1° 46' N Range 1° 35' W. Mich.



Reminders of	Public Courses 1865	Public Courses 1872	Public Courses 1878
44	8		

81-774

Total number of Acres 21350.84

Survey designated	By Whom Surveyed	Date of Contract	Amount of Acres	When Surveyed	When paid for and set in the "Section Book"
Ship line	H. A. Bland	April 7 1867	4.35 44	1st June 1868	
Subdivisions	George Searles	April 11 1867	68 12 40	1st June 1868	

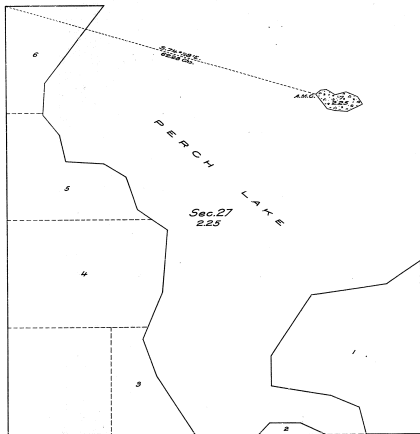
The above map of Township 1° 46' North of Range 1° 35' West of the Principal Meridian Michigan is a truly conformable to the field notes of the survey there on file in this office which have been examined and approved.

George Searles Office  
 Dubuque Jan 25 1867

Charles Allen  
 Surveyor

By *George Searles*  
 Register

PLAT OF AN ISLAND  
 IN  
 Perch Lake.  
 Sec. 27, T. 46 N., R. 35 W., Mich. Mer.  
 MICHIGAN.



LEGEND.

Scale: 1 inch = 10 miles.

Surveyed by Guy R. Veal, U. S. Cadastral Engineer, on October 5 and 6, 1922, under supplemental special instructions for Group No. 4, Michigan, dated August 29, 1922, issued by Arthur B. Elder, Associate Supervisor of Surveys, which were approved by the Commissioner of the General Land Office on September 8, 1922.

Area of lands surveyed = 2.25 Acres, not shown upon the plat approved January 24, 1924.

Areas of previously surveyed lands not shown.

The undersigned hereby certifies that the survey delineated upon this plat has been executed under his general direction and in accordance with the approved supplemental special instructions, issued pursuant to authority contained in office letter 96900 "P" 209, dated May 28, 1922, addressed to the Secretary of the Interior (approved May 23, 1922), and letter dated May 21, 1922, and that the field notes and the plat of the survey have been carefully verified.

Denver, Colorado.  
 January 9, 1924.

*Arthur B. Elder*  
 Supervisor of Surveys.

*W.H.*  
 Department of the Interior,  
 General Land Office.

Washington, D. C., January 22, 1924.

*W.H.*

The above plat of an island in Perch Lake in Section 27, Township 46 North, Range 35 West, of the Michigan Meridian, in the State of Michigan, is strictly conformable to the field notes of the survey thereof, on file in this office, which have been examined and approved.

*William Fox*  
 Commissioner and ex officio  
 U. S. Surveyor General for Michigan.

44-18-2