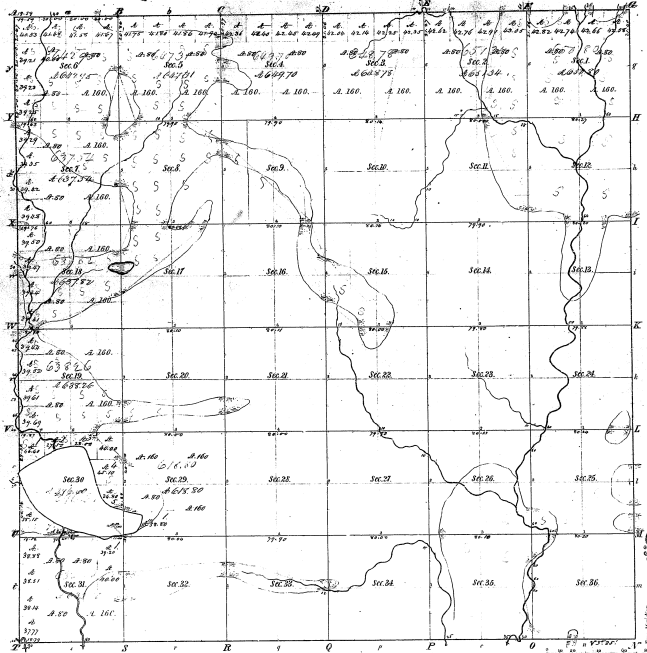


Michigan - 1850
Michigan

Township No. 15 N., Range No. 5 West Mer. (Mich.)



Measures of a Foot on Station 26, 26' 54"			
Point	Course	Dist	Point
A	N. 20° E.	10.00	
A	N. 75° 30' E.	10.00	
A	N. 80° 00' E.	10.00	
A	N. 85° 00' E.	10.00	
A	N. 90° 00' E.	10.00	
A	N. 95° 00' E.	10.00	
A	N. 100° 00' E.	10.00	
A	N. 105° 00' E.	10.00	
A	N. 110° 00' E.	10.00	
A	N. 115° 00' E.	10.00	
A	N. 120° 00' E.	10.00	
A	N. 125° 00' E.	10.00	
A	N. 130° 00' E.	10.00	
A	N. 135° 00' E.	10.00	
A	N. 140° 00' E.	10.00	
A	N. 145° 00' E.	10.00	
A	N. 150° 00' E.	10.00	
A	N. 155° 00' E.	10.00	
A	N. 160° 00' E.	10.00	
A	N. 165° 00' E.	10.00	
A	N. 170° 00' E.	10.00	
A	N. 175° 00' E.	10.00	
A	N. 180° 00' E.	10.00	
A	N. 185° 00' E.	10.00	
A	N. 190° 00' E.	10.00	
A	N. 195° 00' E.	10.00	
A	N. 200° 00' E.	10.00	
A	N. 205° 00' E.	10.00	
A	N. 210° 00' E.	10.00	
A	N. 215° 00' E.	10.00	
A	N. 220° 00' E.	10.00	
A	N. 225° 00' E.	10.00	
A	N. 230° 00' E.	10.00	
A	N. 235° 00' E.	10.00	
A	N. 240° 00' E.	10.00	
A	N. 245° 00' E.	10.00	
A	N. 250° 00' E.	10.00	
A	N. 255° 00' E.	10.00	
A	N. 260° 00' E.	10.00	
A	N. 265° 00' E.	10.00	
A	N. 270° 00' E.	10.00	
A	N. 275° 00' E.	10.00	
A	N. 280° 00' E.	10.00	
A	N. 285° 00' E.	10.00	
A	N. 290° 00' E.	10.00	
A	N. 295° 00' E.	10.00	
A	N. 300° 00' E.	10.00	
A	N. 305° 00' E.	10.00	
A	N. 310° 00' E.	10.00	
A	N. 315° 00' E.	10.00	
A	N. 320° 00' E.	10.00	
A	N. 325° 00' E.	10.00	
A	N. 330° 00' E.	10.00	
A	N. 335° 00' E.	10.00	
A	N. 340° 00' E.	10.00	
A	N. 345° 00' E.	10.00	
A	N. 350° 00' E.	10.00	
A	N. 355° 00' E.	10.00	
A	N. 360° 00' E.	10.00	

12-21

12-21

Total number of Acres			
Survey designated	By whom Surveyed	Date of Contract	Amount of Survey
Township lines	Henry Shickler	July 12, 1837	36 1/2
Subdivisions	Henry Shickler	July 27, 1837	65.29.36

The above copy of Township 15 N. 5 W. of Range 5 W. 1st 2d of the 1st Principal Meridian Michigan is a true and correct copy of the survey thereon as filed in this office which have been examined and approved.

Surveyor General's Office
Ann Arbor Mich. 1-1839

P. P. Moore Surveyor

TOWNSHIP 15 NORTH, RANGE 5 WEST, OF THE MICHIGAN MERIDIAN, MICHIGAN.

DEPENDENT RESURVEY

12-21

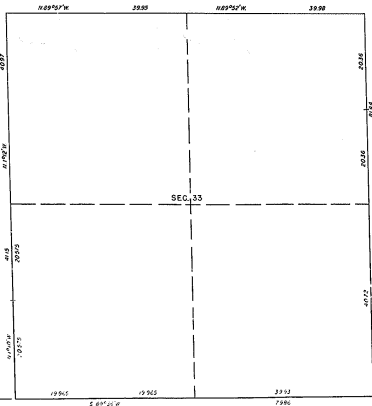
A history of surveys is contained in the field note record.

This plat represents the dependent resurvey of a portion of the south boundary and a portion of the subdivision lines designed to retrace the corners in their true original locations according to the best available evidence, T. 15 N., R. 5 W., Michigan Meridian, Michigan.

The Jollings and acres are as shown on the plat approved June 10, 1899. Survey executed by Michael J. Avery, Cadastral Surveyor, beginning June 10, 1892, and completed June 10, 1892, pursuant to Special Instructions for Group No. 65, Michigan, dated June 7, 1892.



Mean
Magnetic
Declination
2 1/2° West



UNITED STATES DEPARTMENT OF THE INTERIOR
BUREAU OF LAND SURVEY
Alexandria, Virginia September 29, 1893

This plat is strictly conformable to the approved field notes, and the survey, having been correctly executed in accordance with the requirements of law and the regulations of this Bureau, is hereby accepted.

For the Director

Henry J. Deerman
Chief Cadastral Surveyor
C. S. No. 1849-1912

U.S. 437384
Latitude 44°54'50"



Scale of Chains