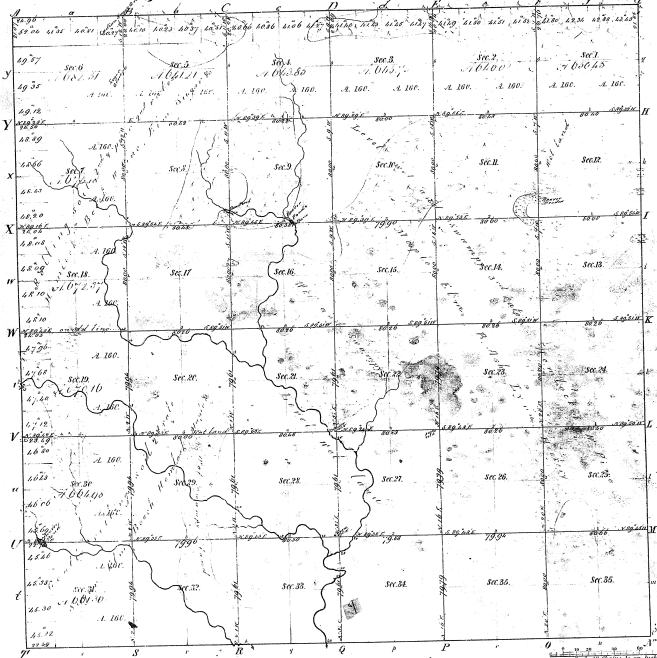


Re-Survey
 Township 1° 16' N Range 1° 3' W Mer. Michigan



Boundaries of
 Paul Conroy 1854 Paul Conroy 1854 Paul Conroy 1854 Paul Conroy 1854

13-19

13-19

Total number of acres 3,551.86

Survey terminated by John Stinson
 Township 1° 16' N Range 1° 3' W
 Township 1° 16' N Range 1° 3' W
 Subdivisions R. A. Brown

Book of contract
 closed at Stinson
 John Stinson
 Jan. 11 1857
 Jan. 17 1859

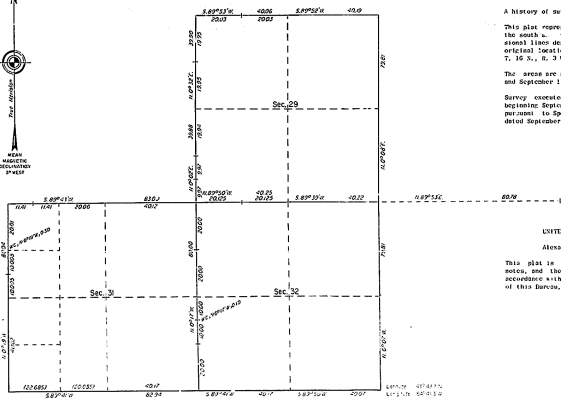
When surveyed
 Jan. 11 1857
 Jan. 17 1859
 Jan. 24 1859

of the survey
 The above being Township 1° 16' N Range 1° 3' W Mer. of the
 Michigan, Northern Michigan
 of the survey there in file in the office, which has been examined and approved
 Surveyor General's Office
 at Detroit Sept. 11 1861

Charles Little
 Surveyor

13-19

TOWNSHIP 16 NORTH, RANGE 3 WEST, OF THE MICHIGAN MERIDIAN, MICHIGAN.
DEPENDENT RESURVEY



A history of surveys is contained in the field note record.

This plan represents the dependent resurvey of a portion of the south $\frac{1}{4}$ sec. 1, r. 3 W. and a portion of the subdivision line designed to retrace the corners in their true original location according to the best available evidence. T. 16 N., R. 3 W., Michigan Meridian, Michigan.

The areas are as shown on the plats approved June 15, 1920 and September 11, 1921.

Survey conducted by Wendell T. Ritter, Cadastral Surveyor, beginning September 16, 1921, and completed October 2, 1921, pursuant to Special Instructions for Group 62, Michigan, dated September 14, 1921.

UNITED STATES DEPARTMENT OF THE INTERIOR
BUREAU OF LAND MANAGEMENT
Alexandria, Virginia January 18, 1922

This plan is strictly conformable to the approved field notes, and the survey, having been correctly executed in accordance with the requirements of law and the regulations of this Bureau, is hereby accepted.

For the Director
W. H. ...
Chief Cadastral Surveyor
Chicago, Kansas Office

