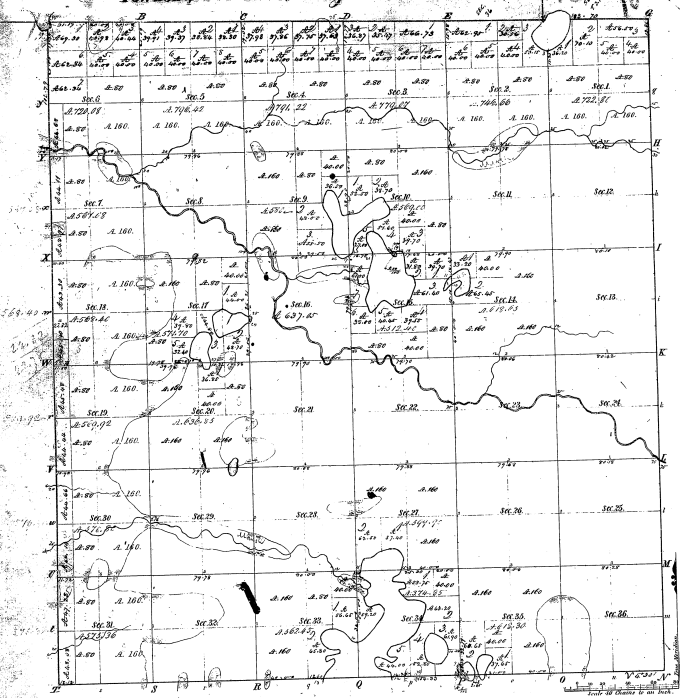


Township N. 20 N., Range N. 14 W., Mer. Mich.



Section	Acres	Owner	Acres	Owner
30.1	360.00	Wm. A. ...	360.00	Wm. A. ...
30.2	360.00	Wm. A. ...	360.00	Wm. A. ...
30.3	360.00	Wm. A. ...	360.00	Wm. A. ...
30.4	360.00	Wm. A. ...	360.00	Wm. A. ...
30.5	360.00	Wm. A. ...	360.00	Wm. A. ...
30.6	360.00	Wm. A. ...	360.00	Wm. A. ...
30.7	360.00	Wm. A. ...	360.00	Wm. A. ...
30.8	360.00	Wm. A. ...	360.00	Wm. A. ...
30.9	360.00	Wm. A. ...	360.00	Wm. A. ...
30.10	360.00	Wm. A. ...	360.00	Wm. A. ...
30.11	360.00	Wm. A. ...	360.00	Wm. A. ...
30.12	360.00	Wm. A. ...	360.00	Wm. A. ...
30.13	360.00	Wm. A. ...	360.00	Wm. A. ...
30.14	360.00	Wm. A. ...	360.00	Wm. A. ...
30.15	360.00	Wm. A. ...	360.00	Wm. A. ...
30.16	360.00	Wm. A. ...	360.00	Wm. A. ...
30.17	360.00	Wm. A. ...	360.00	Wm. A. ...
30.18	360.00	Wm. A. ...	360.00	Wm. A. ...
30.19	360.00	Wm. A. ...	360.00	Wm. A. ...
30.20	360.00	Wm. A. ...	360.00	Wm. A. ...
30.21	360.00	Wm. A. ...	360.00	Wm. A. ...
30.22	360.00	Wm. A. ...	360.00	Wm. A. ...
30.23	360.00	Wm. A. ...	360.00	Wm. A. ...
30.24	360.00	Wm. A. ...	360.00	Wm. A. ...
30.25	360.00	Wm. A. ...	360.00	Wm. A. ...
30.26	360.00	Wm. A. ...	360.00	Wm. A. ...
30.27	360.00	Wm. A. ...	360.00	Wm. A. ...
30.28	360.00	Wm. A. ...	360.00	Wm. A. ...
30.29	360.00	Wm. A. ...	360.00	Wm. A. ...
30.30	360.00	Wm. A. ...	360.00	Wm. A. ...
30.31	360.00	Wm. A. ...	360.00	Wm. A. ...
30.32	360.00	Wm. A. ...	360.00	Wm. A. ...
30.33	360.00	Wm. A. ...	360.00	Wm. A. ...
30.34	360.00	Wm. A. ...	360.00	Wm. A. ...
30.35	360.00	Wm. A. ...	360.00	Wm. A. ...
30.36	360.00	Wm. A. ...	360.00	Wm. A. ...

10-3

Total number of Acres 22,648.90

Survey designated	By Whom Surveyed	Date of Contract	Amount of Survey	When Surveyed	By Whom Surveyed	Amount of Survey	When Surveyed
Township lines	John Smith	Nov. 1857	22,648.90	1857	John Smith	22,648.90	1857
Section lines	John Smith	Nov. 1857	22,648.90	1857	John Smith	22,648.90	1857
Boundary	Same	Nov. 1857	22,648.90	1857	John Smith	22,648.90	1857

The above map of Township N. 20 N. of Range N. 14 W. Mer. Mich. is a true and correct copy of the original survey and is hereby approved and confirmed by the Survey General of the State of Michigan, this 15th day of Nov. 1857.

C. P. ...

Supplemental Plat

of

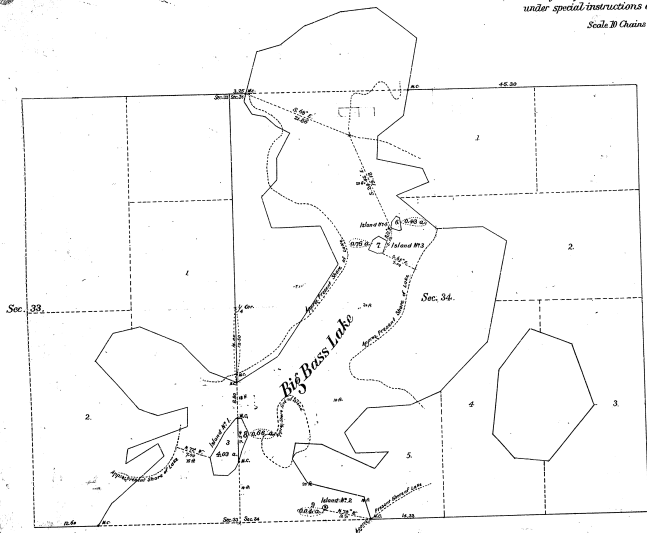
Islands in a meandered Lake,

Shown by Lots in Sec. 33, and by Lots 6-7-8-9  
in Sec. 34, T<sub>20</sub>N, R<sub>18</sub>W, 2dE.

MICHIGAN

Surveyed by John A. Mitchell, U.S. Deputy Surveyor,  
under special instructions dated Feb'y 17<sup>th</sup> 1865.

Scale 3" Chains to an inch.



Department of the Interior,  
General Land Office,  
Washington D.C. May 4, 1865

The above plat of Islands in a meandered Lake shown by lots  
in Sec. 33, and by Lots 6-7-8-9 in Sec. 34, T<sub>20</sub>N, R<sub>18</sub>W, 2dE, Michigan,  
is a correct plat of a survey executed by John A. Mitchell, U.S. Deputy  
Surveyor, in pursuance of special instructions from the Commissioner  
of the General Land Office, bearing date February 17<sup>th</sup> 1865, and is  
strictly conformable to the field notes thereof, on file in this Office,  
which have been examined and approved.

*W. A. Richards*  
Commissioner and ex. officio  
Surveyor General of Michigan.

10-3

44  
2418

10-3

TOWNSHIP 20 NORTH, RANGE 14 WEST, MICHIGAN MERIDIAN, MICHIGAN  
SURVEY OF ISLAND IN SECTION 15

Field Notes of Survey

Surveys as represented hereon were executed with a Gurley solar transit, constructed in accordance with Bureau specifications, which transit was in good condition and was placed in satisfactory adjustment and tested prior to undertaking this work. Directions of all lines refer to the true meridian and were determined by the solar transit method or by prolongation of celestial observations. Distances are expressed in chains, measured on the slope and reduced to horizontal elevations.

The point for N. C. of secs. 10 and 15, on N. shore of Harper Lake, was determined from the remains of an original BT: a rotted pine stump, N. 40° W., 20 lks. dist.; point falls on shore line and in line with local blazes to N.; to verify this point further, I recover the original N.C. of secs. 10 and 15 on S. shore of Elbow Lake, S. 87° 44' W., 13.69 chs. dist. (Records: S. 88° 02' W., 19.15 chs.)

At the corner point, set a regulation iron post, 2 1/2 ins. diam., with brass cap mhd.

T 20 N  
R 14 W  
S 15 N C  
18 1/2 W

from which

A cedar, 4 ins. diam., bears S. 67° W., 13 lks. dist., mhd. T20N E14W S15 NC BT.  
A white pine, 9 ins. diam., bears N. 59° 2' W., 62 lks. dist., mhd. T20N E14W S15 NC BT.

Thence, S. 56° 51' E., 30.64 chs. dist., to the point for the auxiliary meander corner on the island, crossing Harper Lake. Distance obtained by triangulation.

At the point for ANC, set a regulation iron post, 2 1/2 ins. diam., with brass cap mhd.

A M C  
T 20 N R 14 W  
S 15  
18 1/2

from which

A white pine, 7 ins. diam., bears N. 32° E., 22 1/2 lks. dist., mhd. S15 ANC BT.  
A white pine, 9 ins. diam., bears N. 74° E., 21 lks. dist., mhd. S15 ANC BT.  
The N. C. of secs. 10 and 15, bears S. 58° 51' E., 30.64 chs. dist.

Meanders of Island

Thence with the meanders of the island, along a well-defined shore with sloping bank and timber thereon.

N. 38° 45' W., 0.47 ch.	S. 87° 45' W., 3.20 chs.	
N. 42° 00' E., 1.00 ch.	S. 75° 45' W., 1.40 chs.	
S. 75° 45' E., 1.38 chs.	S. 68° 15' W., 2.40 chs.	
S. 2° 45' E., 0.90 ch.	N. 15° 15' W., 2.20 chs.	
	swamp.	N. 54° 45' E., 1.00 ch.
S. 47° 15' E., 2.90 chs.	At 10 lks., enter swamp.	N. 78° 15' E., 3.10 chs.
	swamp.	N. 34° 45' E., 1.60 chs.
S. 25° 15' E., 1.70 chs.		
S. 3° 30' E., 0.70 ch.		
S. 40° 15' W., 0.80 ch.	N. 06° 15' W., 1.53 chs.	At 60 lks. enter swamp. The ANC, at end of swamp and place of beginning.

General Description

The island is of sandy loam formation, with some stone and gravel, and it reaches approximately 15 feet above the water level of Harper Lake. There is a small sock of swamp between the two upland areas. The timber species consists of cedar, birch, white and Norway pine, hemlock, tamarac, maple and poplar, ranging in size from 4 to 20 ins. diam., with many old rotted stumps. I estimate some of the cedars to be well over 100 years old. There is a rich soil around the island.

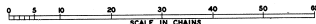
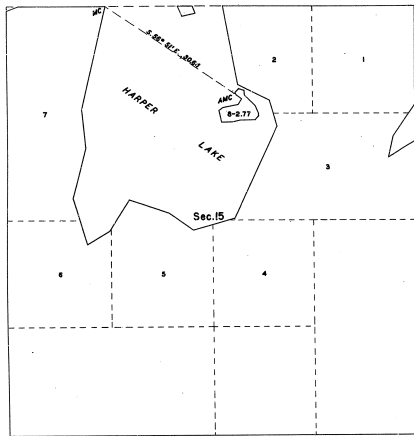
There are no improvements on the island. The formation of the island is similar to that of the mainland included in the original surveyed areas, and the timber growth thereon attests to the fact that it was in existence in 1857, when Michigan was admitted into the Union, and in 1859 when the township was surveyed, and at all subsequent dates and therefore has the status of public land.

The island is well over 50% upland in character.

UNITED STATES DEPARTMENT OF THE INTERIOR  
BUREAU OF LAND MANAGEMENT  
Washington, D. C. August 4, 1909

This plat is strictly conformable to the above field notes of survey, which have been critically examined and found correct, and are hereby approved, and the survey, having been properly executed in accordance with the requirements of law and the regulations of this Bureau, is hereby accepted.

For the Director  
A. H. Harrold  
Chief Engineer and Staff Officer



SCALE IN CHAINS  
Area Surveyed: 2.77 acres

I HEREBY CERTIFY UPON HONOR that, in pursuance of Special Instructions for Group 87, Michigan, bearing date of August 15, 1908, and Assignment Instructions dated August 5, 1908, I executed Survey from 23 to 28 September, 1909, the island in Harper Lake, sec. 15, T. 20 N., R. 14 W., Michigan Meridian, in the State of Michigan, which is represented by this diagram and field notes of survey, and that said survey has been made in strict conformity with said instructions, the Manual of Instructions for Survey of the Public Lands of the United States, and in the specific manner described in the notes of survey.

Hugh B. Crawford

June 18, 1909.

Hugh B. Crawford  
Cadastral Surveyor