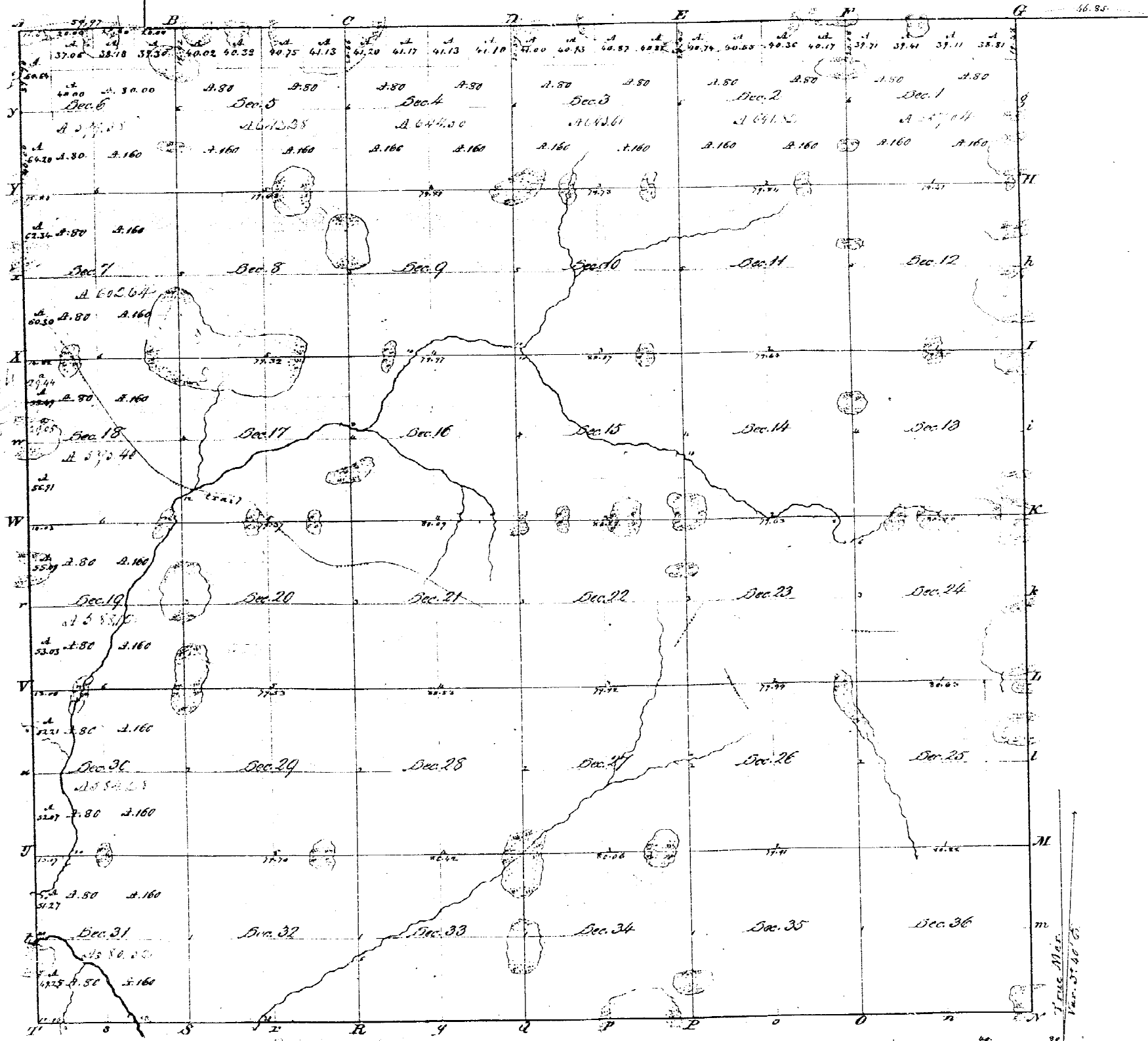


Township N^o 10 N, Range N^o 11 East Mer. (Mich.)



Survey Designated	By whom surveyed	Date of Contract	Acres of survey	When surveyed	When filed for record
addition	Striano Dunham	25 th Nov. 1833	57. 52. 47	3 rd of 1834	1 st of 1835
Town Lines	Henry Parker	25 th Nov. 1833	23. 62. 36	1 st of 1834	2 ^d of 1834

The above maps of Township N. 10 N., Range N. 11 E. Mer. (Mich.) is strictly conformable to the field notes of the Survey Chain of angle in this Office, which has been examined and approved.
 Surveyor General's Office
 Cincinnati,