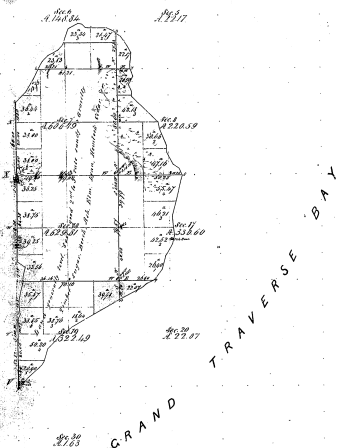


Resurvey  
Township N<sup>o</sup> 32 N. Range N<sup>o</sup> 10 W. Mer. Mich.

48-17



\*The hole showed 'paler' soil given to the reserve from  
information obtained by the Deputy in the field

Section of	Page	Course	Dist	Point	Course	Dist	Point	Course	Dist
1									
2									
3									
4									
5									
6									
7									
8									
9									
10									
11									
12									
13									
14									
15									
16									
17									
18									
19									
20									
21									
22									
23									
24									
25									
26									
27									
28									
29									
30									
31									
32									
33									
34									
35									
36									
37									
38									
39									
40									
41									
42									
43									
44									
45									
46									
47									
48									
49									
50									
51									
52									
53									
54									
55									
56									
57									
58									
59									
60									
61									
62									
63									
64									
65									
66									
67									
68									
69									
70									
71									
72									
73									
74									
75									
76									
77									
78									
79									
80									
81									
82									
83									
84									
85									
86									
87									
88									
89									
90									
91									
92									
93									
94									
95									
96									
97									
98									
99									
100									

48-17

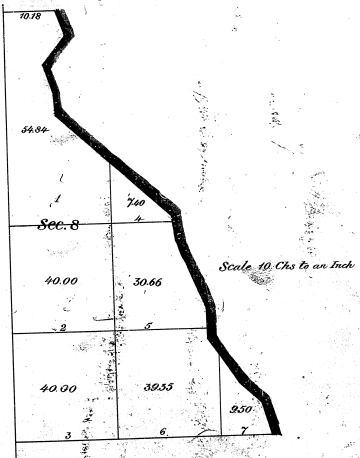
Survey Designated	By Whom Surveyed	Date of Survey	Total number of Acres 280.00		When changed to Ac. Section 280
			Ac.	Sq. R.	
Original Survey	Wm. H. H. H.	1840	280.00		
Resurvey	Wm. H. H. H.	1840	280.00		
Subsequent	Wm. H. H. H.	1840	280.00		

The above Map of Township N<sup>o</sup> 32 North Range N<sup>o</sup> 10 W. of the  
Principal Meridian of Michigan is hereby declared to be a true  
and correct survey in pursuance of the provisions of the act approved  
March 27th 1837.  
Surveyor General's Office, Lansing Michigan, 1842

Com. C. C. C.

41-17 (u)

SECTION 8 TOWNSHIP 32 NORTH RANGE 10 WEST, MICHIGAN.



The above corrected diagram of Section 8, Township 32 North, Range 10 West, Michigan, has been prepared in this Office for the purpose of maintaining the position of Lots 1, 2, & 3, as sold by the original survey, and is hereby approved.

General Land Office  
Washington, D.C. June 12, 1884

*H. Bullard*  
Commissioner

RECEIVED AT  
JUN 16 1884  
STATE LAND OFFICE

*See Letter Comr. Genl Land Office of June 12, 1884.*