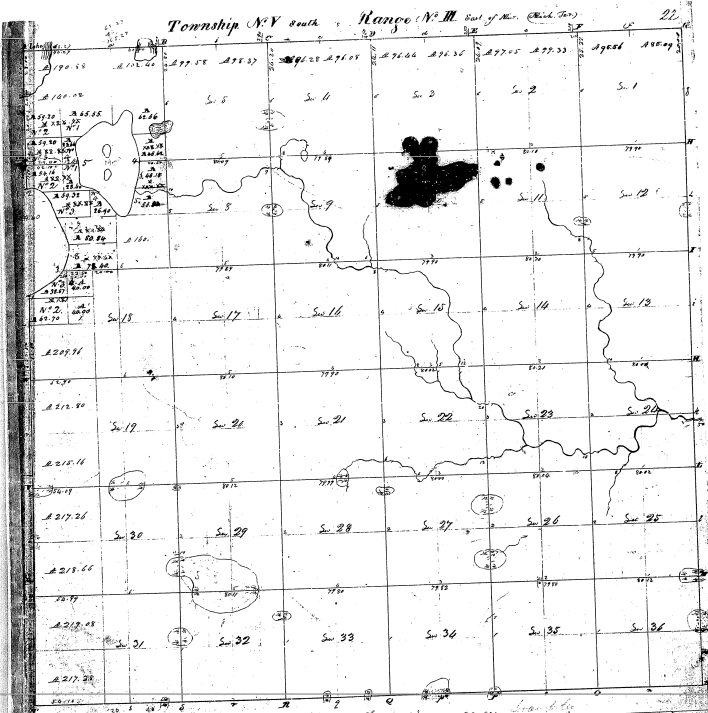


Township N^o 7 south Range N^o 11 West of Mer. (Black Top)



Total 4, 24, 389.47

Compared to a contract with and instructions from General Office bearing General of that date, bearing date the 10th day of June 1852, and found the above Township and its parts to be the said lands and parcels of land therein mentioned and that the same were then and are now the property of the said General Office and that the same were then and are now the property of the said General Office and that the same were then and are now the property of the said General Office.

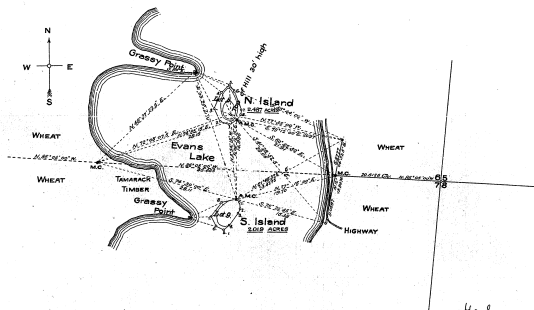
J. M. [Signature]

30-18

30-18

MAP
 of
Islands in Evans Lake
 Sections 6 and 7, Tp. 5 S., R. 3 E.,
 Michigan Mer.
 Ann Arbor: MICHIGAN.
 Surveyed 1896-1897 by J. B. Davis.
 Scale, 1 in. = 10 ch.

21810-05



J.B.D.

J.B.D.

DEPARTMENT OF THE INTERIOR,

General Land Office,

Washington, D.C., October 2, 1896.

The above diagram of two islands in Evans Lake, designated as North Island in Section 6, and South Island in Section 7, Tp. 5 S., R. 3 E., Meridian of Michigan, is strictly conformable to the field notes of the survey thereof, executed by J. B. Davis, U.S. Deputy Surveyor, on file in this office, which have been examined and approved.

RECEIVED AT

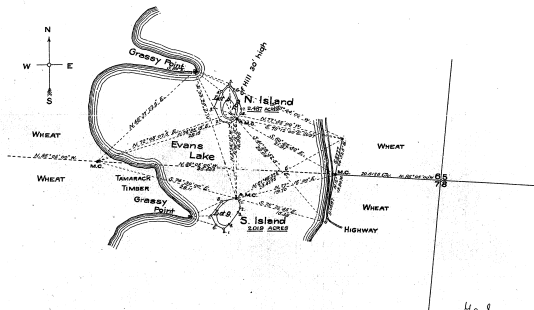
OCT 10 1896

STATE LAND OFFICE

L. M. Wherry
 Commissioner and
 ex officio Surveyor General for Michigan.

MAP
 of
Islands in Evans Lake
 Sections 6 and 7, Tp. 5 S., R. 3 E.,
 Michigan Mer.
 Ann Arbor: MICHIGAN.
 Surveyed 1896-1897 by J. B. Davis.
 Scale, 1 in. = 10 ch.

21810-05



J.B.D.

Geo. H. H.

DEPARTMENT OF THE INTERIOR,

General Land Office,

Washington, D.C., October 2, 1896.

The above diagram of two islands in Evans Lake, designated as North Island in Section 6, and South Island in Section 7, Tp. 5 S., R. 3 E., Meridian of Michigan, is strictly conformable to the field notes of the survey thereof, executed by J. B. Davis, U.S. Deputy Surveyor, on file in this office, which have been examined and approved.

RECEIVED AT

OCT 10 1896

STATE LAND OFFICE

W. H. H. Wood
 Commissioner and
 ex officio Surveyor General for Michigan.