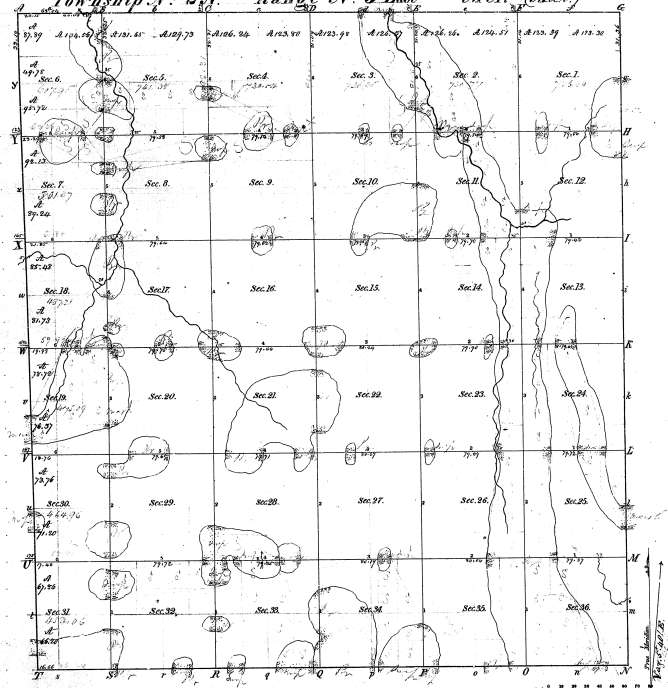


Township No 2 N Range No 5 East Mer. (Mich)

22

29-35

29-35



Surveyed in 1825 by Sylvester Hibley, Deputy Surveyor.

July 22, 1867

I certify that the above is a true copy of the plat in this office.

Surveyor General's Office,  
Cincinnati.

Geo. W. ...

Sur Genl