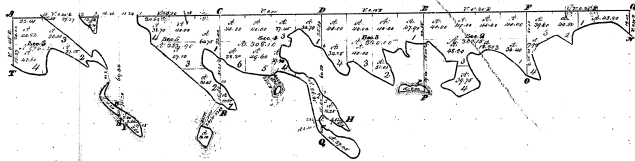


Township N<sup>o</sup> 41 N Range N<sup>o</sup> 2 E Mer. Mich



**LAKE HURON.**

41. N. 2 E.

Shoreline of		Course	Dist	Course	Dist	Course	Dist
55	34						

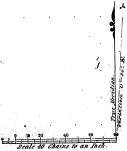
33-34

Total number of Acres 1537.07

Surveys included	By Whom Surveyed	Date of Survey	Amount of Survey	Area diverted	Area changed by this Survey
Township 41 N.	By Wm. G. Smith	1855	1537.07	0.00	0.00

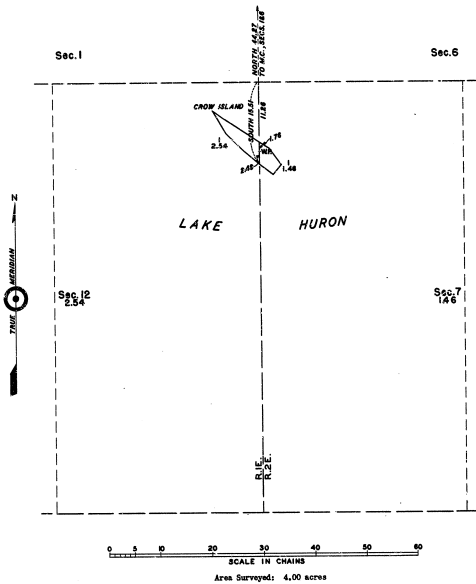
This is a true and correct copy of the original survey of the Township of 41 N. Range of 2 E. Michigan, as shown on the field notes of the survey being filed in this office, and has been examined and approved.

Surveyor General's Office,  
 Detroit, Dec. 2nd 1857  
 Lucius Lyon, Sur. Genl.



TOWNSHIPS 41 NORTH, RANGES 1 AND 2 EAST, MICHIGAN MERIDIAN, MICHIGAN  
SURVEY OF ISLAND IN SECTIONS 7 AND 12

3335 ④



Field Notes of Survey

Surveys as represented hereon were executed with a Gurley solar transit, constructed in accordance with Bureau of Land Management specifications, which transit was in good condition and was placed in satisfactory adjustment prior to undertaking this work. Direction of all lines refer to the true meridian and were determined by the solar transit method or by prolongation of celestial observations. Distances are expressed in chains, measured on the slope, reduced to horizontal equivalents.

- The point for the N. C. of secs. 1 and 6, on S. shore of Lake Huron, is abd. by the stump of the original tree cor., a cedar, 10 ins. diam., which is the N. fork of a Foxed cedar.
- I make the S. fork of the cedar the new corner, which I mark, 74 1/2 ft N on N. E. 28 58 on E., 213 31 on N. and 80 on S. This tree is 1 1/2 ft. S. of the N. fork and is 10 ins. diam. A cedar, 12 ins. diam., bears N. 82° W., 15 lks. dist., abd. NC E. by a local surveyor.
- Thence South, bet. secs. 1 and 6 and sec. 7 and 12, over Lake Huron. Distance obtained by triangulation.
- 44.27 Record distance for point for cor. of secs. 1, 6, 7 and 12, Tc. 41 N., R. 1 and 2 E. Falls in lake.
- 55.03 Point for N.C. on N. shore of Crow Island; not monumented. Thence across island through timber and growth.
- 57.29 Set a regulation iron post, 2 1/2 ins. diam., 20 ins. in ground, for witness point, with brass cap abd.
- |             |
|-------------|
| W 2         |
| T 41 N      |
| E 1 1/2 2 E |
| S 1 1/2 7   |
| 1508        |
- From which
- A cedar, 6 ins. diam., bears N. 55° E., 12 lks. dist., abd. WP 57 57.
- A cedar, 6 ins. diam., bears N. 71° W., 14 lks. dist., abd. WP 512 57.
- 59.78 Point for N.C. on S. shore of island; not monumented.

Thence, from the point for the N.C. on N. shore of island, wester the island, in sec. 7. Along a well-defined, rocky shore line.

- S. 58° 15' E., 2.20 cha.
- S. 37° 30' E., 3.50 cha.
- S. 41° 00' N., 2.50 cha.
- N. 54° 04' W., 3.22 cha. To the point for N.C. on S. side of island.

Thence in sec. 12.

- N. 50° 30' W., 3.80 cha.
- N. 45° 15' W., 4.50 cha.
- N. 31° 00' N., 4.00 cha.
- S. 54° 45' E., 2.60 cha.
- S. 58° 15' E., 4.00 cha. To the N.C. on N. side and place of beginning.

General Description

The island is of sandy black loam and organic matter over heavy stone formation. It reaches an elevation of approximately 12 feet above the level of Lake Huron.

The timber is cedar, poplar, birch and spruce, ranging in size from 4 to 12 ins. diam. The island is covered by a dense growth of young timber and brush.

There are no improvements on the island.

The rocky formation of the island attests to the fact that it was in existence prior to 1837, when Michigan gained statehood, and at all subsequent dates, and therefore has the status of public land.

The island is 1006 sq. ft.

UNITED STATES DEPARTMENT OF THE INTERIOR  
BUREAU OF LAND MANAGEMENT  
Washington, D. C. August 4, 1959

This plat is strictly conformable to the above field notes of survey, which have been critically examined and found correct, and are hereby approved, and the survey, having been properly executed in accordance with the requirements of law and the regulations of this Bureau, is hereby accepted.

For the Director  
*[Signature]*  
Chief Engineering Staff Officer

I HEREBY CERTIFY UPON HONOR that, in pursuance of Special Instructions for Group 57, Michigan, bearing date of August 5, 1959, and Assignment Instructions dated August 5, 1959, I surveyed on September 2, 1959, the island in Lake Huron, secs. 7 and 12, Tc. 41 N., R. 1 and 2 E., Michigan Meridian, in the State of Michigan, which is represented by this diagram and field notes of survey, and that said survey has been made in strict conformity with said instructions, the Manual of Instructions for Survey of the Public Lands of the United States, and in the specific manner described in the notes of survey.

*Hugh B. Crawford*

June 19, 1959.

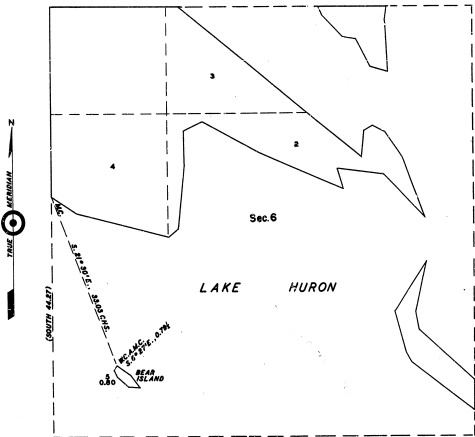
Hugh B. Crawford  
Cadastral Surveyor

c.15

This plat represents the complete record of survey.

TOWNSHIP 41 NORTH, RANGE 2 EAST, MICHIGAN MERIDIAN, MICHIGAN  
SURVEY OF ISLAND IN SECTION 6

33-34



SCALE IN CHAINS  
0 10 20 30 40 50 60 70 80  
Area Surveyed: 0.80 acres

I HEREBY CERTIFY UPON OATH that, in pursuance of Special Instructions for Group IV, Michigan, bearing date of August 5, 1856, and Assignment Instructions dated August 5, 1856, I surveyed on September 2, 1856, Bear Island in Lake Huron, Sec. 5, T. 41 N., R. 2 E., Michigan Meridian, in the State of Michigan, which is represented by this diagram and field notes of survey, and that said survey has been made in strict conformity with said Instructions, the Manual of Instructions for Survey of the Public Lands of the United States, and in the specific manner described in the notes of survey.

*Hugh B. Crawford*

June 18, 1859.

Hugh B. Crawford  
Cadastral Surveyor

Field Notes of Survey

Surveys as represented hereon were executed with a Gurley solar transit, constructed in accordance with Bureau of Land Management specifications, which transit was in good condition and was placed in satisfactory adjustment prior to undertaking this work. Directions of all lines refer to the true meridian and were determined by the solar transit method or by prolongation of celestial observations. Distances are expressed in chains, measured on the strips, reduced to horizontal equivalents.

The point for the M.C. of secs. 1 and 6, T. 41 N., R. 1 and 2 E., on the N. shore of Lake Huron, was established in connection with the surveys of Crow Island, in secs. 7 and 12, T. 41 N., R. 1 and 2 E., executed at the same time as these surveys. See the official record thereof.

From the true point for the M.C. of secs. 1 and 6, thence, S. 21° 30' E., 33.03 chs., crossing waters of Lake Huron, on a connecting line to the true point for the auxiliary meander cor. on Bear Island. Bearing and distance obtained by traverse and triangulation.

The point for the ANC on the island is subject to damage by storm and ice; therefore, at a point S. 6° 27' E., 79.8 lks. dist.

Set a regulation iron post, 2 1/2 ins. diam., 16 ins. in the ground to stone and in a mound of stone to top, for witness cor., with brass cap and.

W C  
A N C  
T 41 N 2 E  
S 6  
1856

from which

A birch, 5 ins. diam., bears S. 42° E., 26 lks. dist., and. WC ANC 56 BT.  
The true point for the M. C. of secs. 1 and 6, bears N. 21° 09' N., 30.80 chs. dist.

Thence, from the true point for the ANC, meander the island, along a well-defined rocky shoreline.

- S. 56° 15' E., 3.30 chs.
- S. 64° 15' E., 2.70 chs.
- N. 50° 30' W., 2.00 chs.
- N. 50° 00' W., 2.80 chs.
- N. 25° 45' W., 1.30 chs.
- N. 31° 20' E., 1.045 chs. To the ANC and point of beginning.

General Description of Island

The island is of stony black loam formation and reaches an elevation of approximately 8 feet above Lake Huron.

The timber is birch, poplar and cedar, ranging in size from 4 to 8 ins. diam., with a dense growth of brush and young timber.

There are no improvements on the island.

The rocky formation of Bear Island attests to the fact that it was in existence in 1837, when Michigan gained statehood, and at all subsequent dates, and therefore has the status of public land.

The island is 100% upland.

UNITED STATES DEPARTMENT OF THE INTERIOR  
BUREAU OF LAND MANAGEMENT  
Washington, D. C. August 4, 1959

This plat is strictly conformable to the above field notes of survey, which have been critically examined and found correct, and are hereby approved, and the survey, having been properly executed in accordance with the requirements of law and the regulations of this Bureau, is hereby accepted.

For the Director

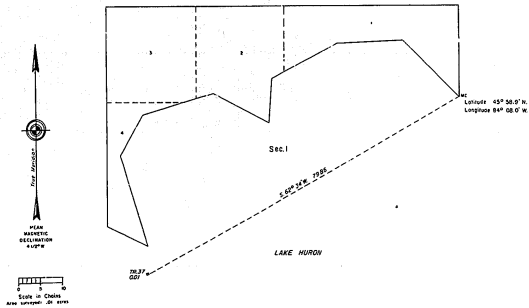
*Earl G. Armstrong*  
Cadastral Engineering Staff Officer

615

This plat represents the complete record of survey.

TOWNSHIP 41 NORTH, RANGE 2 EAST, MICHIGAN MERIDIAN, MICHIGAN.  
SURVEY OF AN ISLAND

33-31



A history of surveys is contained in the field notes.

This plat represents the survey of one island in Lake Huron, T. 41 N., R. 2 E., Michigan Meridian, Michigan.

Except as indicated hereon, the lottings and areas are as shown on an unpatented plan, with the exception of the annotation, "Sec. 1 with lotter of 24 Dec. 1865."

Survey executed by Gary L. Erskins, Cadastral Surveyor, beginning July 31, 1977, and completed July 15, 1977, pursuant to Special Instructions dated June 3, 1977, for Group No. 79, Michigan.

UNITED STATES DEPARTMENT OF THE INTERIOR  
BUREAU OF LAND MANAGEMENT  
Denver, Colorado      November 19, 1981

This plat is strictly conformable to the approved field notes, and the survey, having been correctly executed in accordance with the requirements of law and the regulations of this Bureau, is hereby accepted.

For the Director

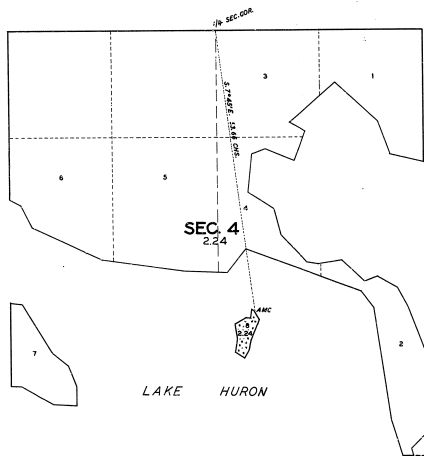
Acting Chief, Cadastral Survey  
Division and Approval Staff

TOWNSHIP NO. 41 NORTH, RANGE NO. 2 EAST, OF THE MICHIGAN MERIDIAN, MICHIGAN.

PLAT OF AN ISLAND IN SECTION 4.

33-34

33-34 (3)



MEMORANDUM  
 THIS PLAT REPRESENTS THE SURVEY OF AN ISLAND IN LAKE HURON WHICH WAS NOT INCLUDED IN THE ORIGINAL SURVEY OF THE TOWNSHIP AS SHOWN ON THE OFFICIAL PLAT RECEIVED WITH THE SURVEYOR GENERAL'S LETTER DATED DECEMBER 28, 1845.

THE SURVEY WAS EXECUTED PURSUANT TO AUTHORITY CONTAINED IN GENERAL LAND OFFICE LETTER 1114035 "C" DATED MAY 9, 1936, WHICH BEARS DEPARTMENTAL APPROVAL UNDER DATE OF MAY 11, 1936.

OFFICE OF U.S. SUPERVISOR OF SURVEYS  
 DENVER, COLORADO, MARCH 21, 1935.

THE ABOVE PLAT OF AN ISLAND IN LAKE HURON IN SECTION 4, TOWNSHIP NO. 41 NORTH, RANGE NO. 2 EAST, MICHIGAN MERIDIAN, MICHIGAN, IS STRICTLY CONFORMABLE TO THE FIELD NOTES OF THE SURVEY THEREOF WHICH HAVE BEEN EXAMINED AND APPROVED.

*Wm. J. ...*  
 U.S. SUPERVISOR OF SURVEYS.

SCALE: 10 CHAINS TO AN INCH

AREA SURVEYED: 2.24 ACRES.

LINES DESIGNATED	BY WHOM SURVEYED	GROUP NO.	DATE	MILEAGE		WHEN SURVEYED
				MLS.	CHS.	
MEANDERS	GUY R. VEAL	30	JULY 11, 1932.	0	22.78	SEPTEMBER 6, 1932.
CONNECTIONS	U.S.C. ENGINEER	0	0	53.64	1930.	1930.

DEPARTMENT OF THE INTERIOR  
 GENERAL LAND OFFICE  
 WASHINGTON, D.C., APRIL 7, 1935.

THE SURVEY REPRESENTED BY THIS PLAT HAVING BEEN CORRECTLY EXECUTED IN ACCORDANCE WITH THE REQUIREMENTS OF LAW AND THE REGULATIONS OF THIS OFFICE, IS HEREBY ACCEPTED.

*J. H. ...*  
 ACTING ASSISTANT COMMISSIONER.