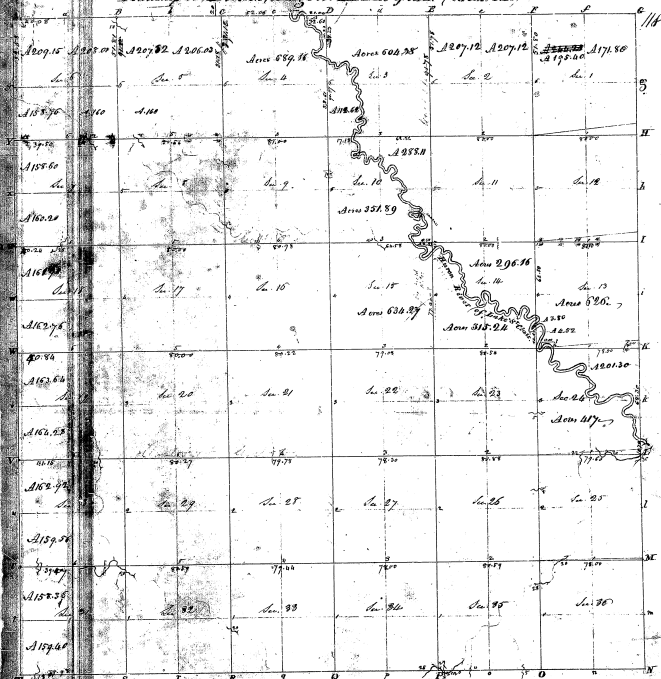


Township N<sup>o</sup>. 21. Range N<sup>o</sup>. 11. E. 10. of Min. (Mich. Terr.)



27-36

27-36

23797<sup>36</sup>

Pursuant to contract with instructions from Edmund Tiffin, Chief Surveyor-General of the United States  
 Surveyor-General of the United States  
 I hereby certify that the above described Township  
 and sections thereof are represented on said plat and described in the  
 plat as they appear relative to the plat in the charge of my nearest office  
 Certified this 23rd day of September 1847  
 J. H. Wambler, S. & L.