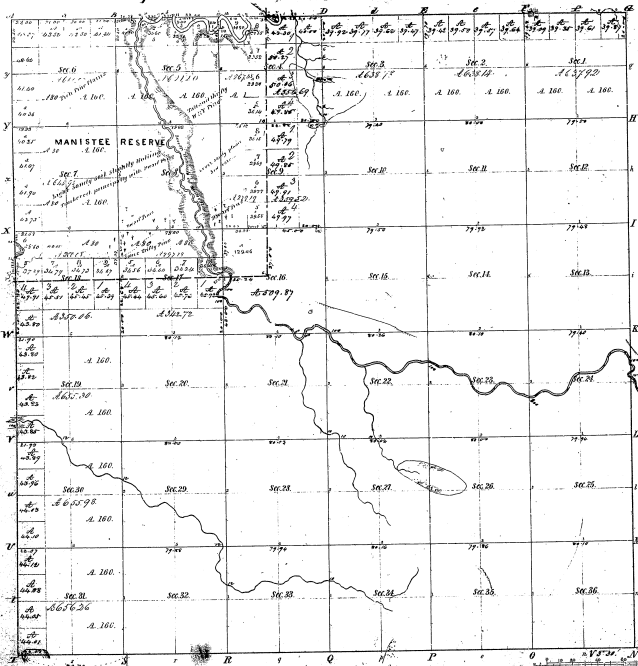


Township 1° 21' N, Range 1° 13' West Mer. (Mich.)



Manistee Reserve

Section	Acres	Section	Acres	Section	Acres
1	36.00	13	36.00	25	36.00
2	36.00	14	36.00	26	36.00
3	36.00	15	36.00	27	36.00
4	36.00	16	36.00	28	36.00
5	36.00	17	36.00	29	36.00
6	36.00	18	36.00	30	36.00
7	36.00	19	36.00	31	36.00
8	36.00	20	36.00	32	36.00
9	36.00	21	36.00	33	36.00
10	36.00	22	36.00	34	36.00
11	36.00	23	36.00	35	36.00
12	36.00	24	36.00	36	36.00

A copy of the plat of the Manistee Reserve on Township 21 North of Range 13 West of the Principal Meridian Michigan is hereby referred to the field notes of the survey thereon on file in the office which have been examined and approved by the State Engineer.

State Engineer
J. L. C.

Manistee Reserve 3600.00
Total number of acres 19200.00

Survey Designated	By Whom Surveyed	Date of Commencement	Amount of Survey	When Surveyed	Plan of the land and the location of the survey
Township lines	John Johnson	July 1836	36.00	1837	1837
Subdivisions	John Johnson	July 1836	36.00	1837	1837
Manistee River	George Weston	April 1837	12.36	1837	1837

The above map of Township 21 North of Range 13 West of the Principal Meridian Michigan is hereby referred to the field notes of the survey thereon on file in the office which have been examined and approved by the State Engineer.

George Weston
Surveyor

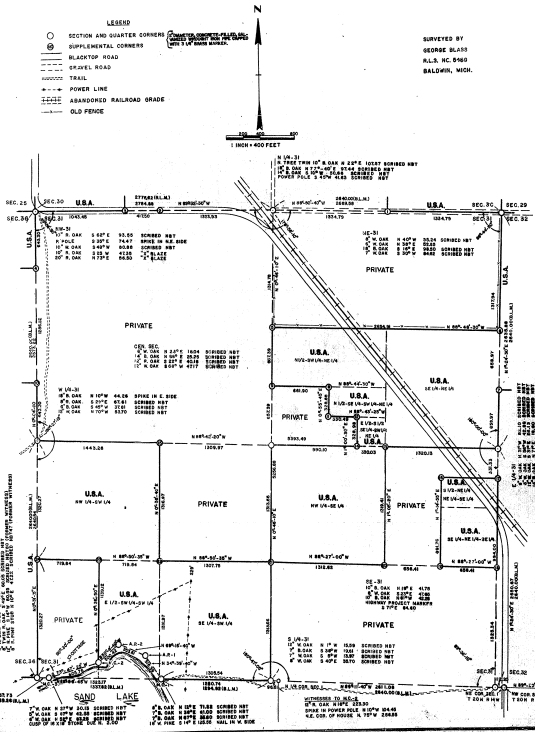
J. L. C.

17-34

17-34

PLAT OF SURVEY
 OF
 U.S. GOVERNMENT LAND
 SECTION 31, T81 N, R13 W, HOGAN TOWNSHIP,
 MARSHLEE NATIONAL FOREST, MANISTEE CO. MICH.

SHEET 1 OF 2 SHEETS



17-34

17-34

Supplemental Plat
of
Part of Tp. 21 North, Range 13 West, Mich. P.M.,
 MICHIGAN.

Scale, 40 chs. = 1 inch.



Department of the Interior,
General Land Office,
Washington, D.C., July 6th 1906.

I hereby certify that the above is a plat of the lotting in NW 1/4 NE 1/4 Sec. 8,
Tp. 21 North, R. 13 West, Mich. P.M., Michigan, north of Manistee River, made
in accordance with the provisions of Section 2219 U.S. Revised Statutes.

J. B. Block
Acting Commissioner Ex-officio
U.S. Surveyor General for Michigan.

