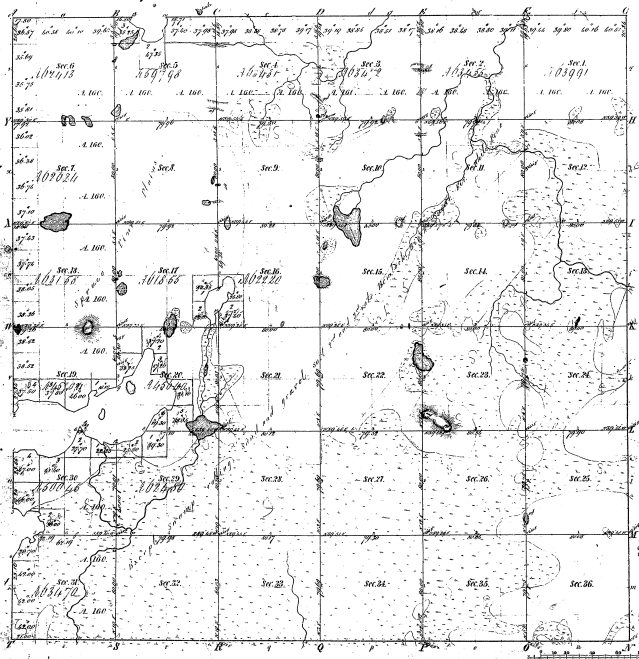


Township 1° 45' N Range 1° 24' W Mer. Mich.



Total number of Acres 22,177.60

Survey designated	By whom surveyed	Date of Contract	Amount of Acres	When Surveyed
1837	1837	1837	1837	1837
1840	1840	1840	1840	1840
1842	1842	1842	1842	1842

The above map of Township 1° 45' North of Range 1° 24' West of the Principal Meridian Michigan is a survey made to the full width of the survey thereon in 1842, and the same is hereby approved and approved.

Surveyor General's Office  
Detroit, Jan 1844

*Saml. Chapman*  
Surveyor

Meanders of  
 38-11  
 Meander 7 1/2 c.

38-11

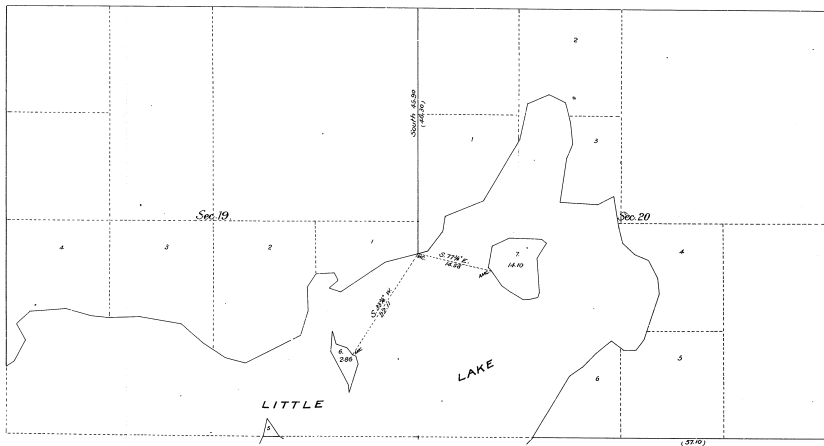
PLAT of TWO ISLANDS

IN LITTLE LAKE  
IN SECS. 19 & 20, T. 45 N., R. 24 W., MICH MER.,  
MICHIGAN.

Executed by Chas. M. Pidgeon, U.S. Surveyor, July 12, 1911,  
under special instructions from the Comr. G.L.O., bearing date July 14, 1911.

Scale: 10 Chs. to an inch.

38-11  
38-11  
38-11



Department of the Interior,  
General Land Office,  
Washington, D.C., Dec. 4, 1912.

The above is a correct plat of survey of two islands in Little Lake, in Secs. 19 & 20, T. 45 N., R. 24 W., Michigan Meridian, Michigan, executed by Chas. M. Pidgeon, U.S. Surveyor, in pursuance of special instructions from the Commissioner of the General Land Office, bearing date July 14, 1911, and is strictly conformable to the Field notes of Survey thereon file in this office, which have been examined and approved.

*W. B. Smith*  
Commissioner and ex officio  
U.S. Surveyor General for Michigan.