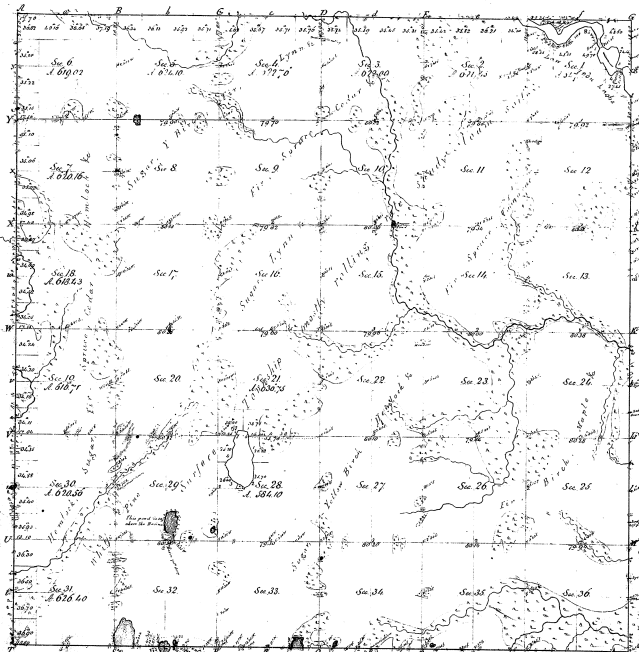


Township N^o 16 N Range N^o 30 W

Mer. Mich.



Number of
 Feet Contain (P.M.P. Part Contain (P.M.P.)) in Acres (P.M.P.)

40-19

Total number of Acres 22,600.3

45-19

Survey designated.	By Whom Surveyed	Date of Contract.	Total number of Acres 22,600.3	
			Surveyed in 1857	Not Surveyed
Township lines.	W.D. Johnston	1857	22,600.3	0
Subdivisions.	Henry Miller	1858	22,600.3	0

The above Map of Township N^o 16 North of Range N^o 30 West of the Principal Meridian Michigan is a copy prepared by the field work of the survey made on this Township and has been examined and approved by the Survey General's Office.

Survey General's Office
 Detroit, January 1859.

Lucius Lyon, Secy. Genl.