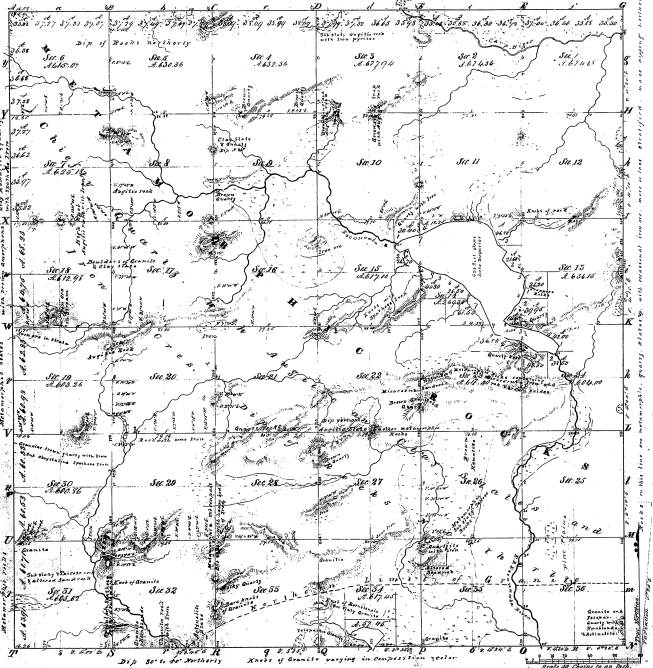


Township N. 17 N. Range N. 26 W. Mer. Mich.

39-31

The figures mentioned in this map are subject to change and should not be used for any purpose without the approval of the Surveyor General.



Section	Acres	Owner	Value	Notes
1	360.00	...	...	...
2	360.00	...	...	...
3	360.00	...	...	...
4	360.00	...	...	...
5	360.00	...	...	...
6	360.00	...	...	...
7	360.00	...	...	...
8	360.00	...	...	...
9	360.00	...	...	...
10	360.00	...	...	...
11	360.00	...	...	...
12	360.00	...	...	...
13	360.00	...	...	...
14	360.00	...	...	...
15	360.00	...	...	...
16	360.00	...	...	...
17	360.00	...	...	...
18	360.00	...	...	...
19	360.00	...	...	...
20	360.00	...	...	...
21	360.00	...	...	...
22	360.00	...	...	...
23	360.00	...	...	...
24	360.00	...	...	...
25	360.00	...	...	...
26	360.00	...	...	...
27	360.00	...	...	...
28	360.00	...	...	...
29	360.00	...	...	...
30	360.00	...	...	...
31	360.00	...	...	...
32	360.00	...	...	...
33	360.00	...	...	...
34	360.00	...	...	...
35	360.00	...	...	...
36	360.00	...	...	...

39-31

Total number of Acres 32,324.07					
Surveyed by	Wm. A. Burt	Date of Survey	January 1880	When Surveyed	the Cont'ed 1880
Subdivisions	Original	January 1880	Ac. 22.22	to 1880	to 1880

The above Map of Township N. 17 N. Range N. 26 W. Mer. Mich. is hereby returned to the full and complete possession of the Surveyor General, and approved by the Surveyor General Office.

Surveyor General Office  
 Lansing, Mich. 1880

Edwin Ryan, Secy. Genl.

367-55