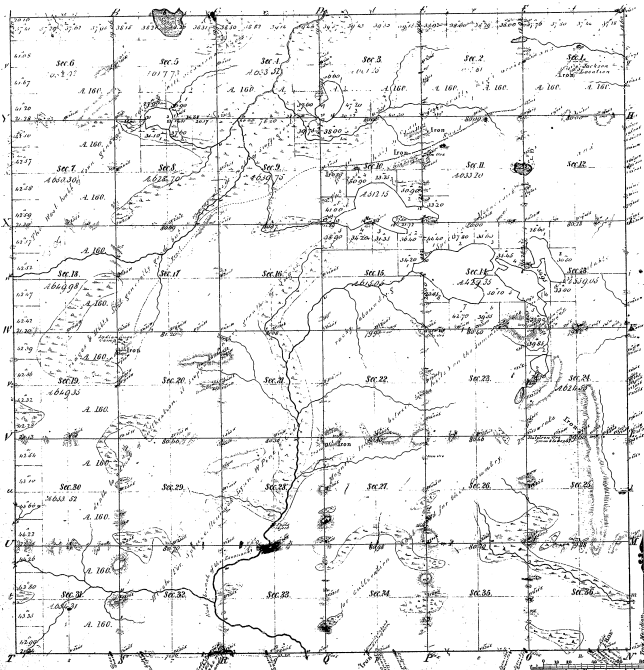


Township 1° 47' N. Range 1° 27' W. Mer. Mich.



Total number of Acres 22318.57

Survey Designated	By Whom Surveyed	Date of Contract	Amount of Survey	When Surveyed	Range of Acres at the Section Cont'd.
Subdivisions	See Recd.	From 21st May 70	22 56	20 21st	

The above Map of Township 1° 47' North of Range 1° 27' West of the Principal Meridian Michigan is truly and correctly made and is hereby approved and approved of the Survey thereof on file in the Office which has been examined and approved

Surveyor General's Office
Detroit March 11 1870

Leicester Lyon, Surveyor

Boundaries of
Post Courses (1824) (1825) (1826) (1827) (1828) (1829) (1830) (1831) (1832) (1833) (1834) (1835) (1836) (1837) (1838) (1839) (1840)

39 30

Boundaries
of 18 16 18
11 18 18

39-30