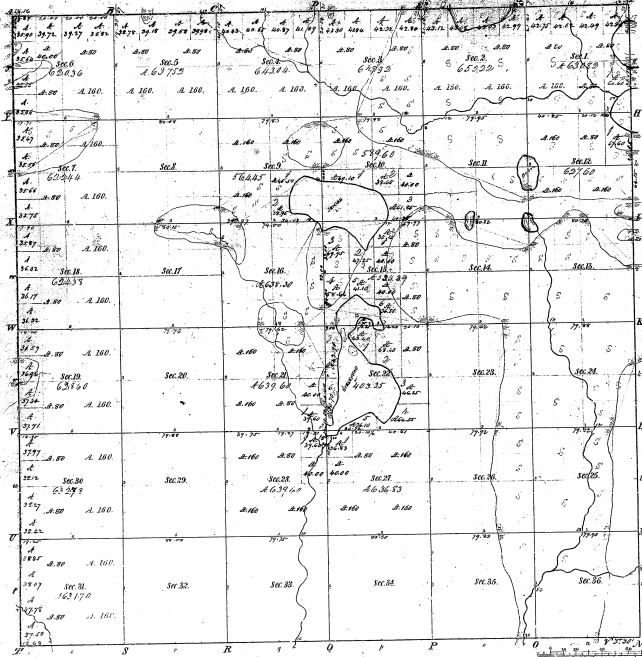


Township N. 15 N., Range N. 8 West Mer. (Mich.)



Mileage of Sec. Per.					
North Course	West Course	East Course	South Course	West Course	East Course
Total of Miles in Township					
1	1.277	1.155	1.277	1.155	1.277
2	1.277	1.155	1.277	1.155	1.277
3	1.277	1.155	1.277	1.155	1.277
4	1.277	1.155	1.277	1.155	1.277
5	1.277	1.155	1.277	1.155	1.277
6	1.277	1.155	1.277	1.155	1.277
7	1.277	1.155	1.277	1.155	1.277
8	1.277	1.155	1.277	1.155	1.277
9	1.277	1.155	1.277	1.155	1.277
10	1.277	1.155	1.277	1.155	1.277
11	1.277	1.155	1.277	1.155	1.277
12	1.277	1.155	1.277	1.155	1.277
13	1.277	1.155	1.277	1.155	1.277
14	1.277	1.155	1.277	1.155	1.277
15	1.277	1.155	1.277	1.155	1.277
16	1.277	1.155	1.277	1.155	1.277
17	1.277	1.155	1.277	1.155	1.277
18	1.277	1.155	1.277	1.155	1.277
19	1.277	1.155	1.277	1.155	1.277
20	1.277	1.155	1.277	1.155	1.277
21	1.277	1.155	1.277	1.155	1.277
22	1.277	1.155	1.277	1.155	1.277
23	1.277	1.155	1.277	1.155	1.277
24	1.277	1.155	1.277	1.155	1.277
25	1.277	1.155	1.277	1.155	1.277
26	1.277	1.155	1.277	1.155	1.277
27	1.277	1.155	1.277	1.155	1.277
28	1.277	1.155	1.277	1.155	1.277
29	1.277	1.155	1.277	1.155	1.277
30	1.277	1.155	1.277	1.155	1.277
31	1.277	1.155	1.277	1.155	1.277
32	1.277	1.155	1.277	1.155	1.277
33	1.277	1.155	1.277	1.155	1.277
34	1.277	1.155	1.277	1.155	1.277
35	1.277	1.155	1.277	1.155	1.277
36	1.277	1.155	1.277	1.155	1.277

1224
18-81

Total number of Acres 25,200.00

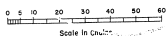
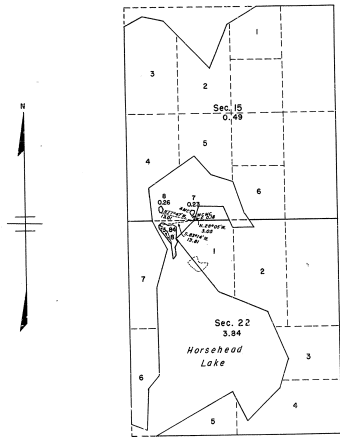
Surveyor designated	By whom designated	Date of Contract	Amount of Survey	When Surveyed	When run and set in the field
Township	John J. H. H. H.	1/15/1873	25,200.00	1/15/73	1/15/73
Subdivision	A. J. H. H. H.	1/15/1873	66.66.66	1/15/73	1/15/73

The above map of Township N. 15 N. Range N. 8 West of this Principal Meridian Michigan is a true copy of the original map of the survey being on file in this office which has been examined and approved.
Surveyor General's Office
Lansing, Mich. 1/15/73

(Signature)

12-34
②

TOWNSHIP 15 NORTH, RANGE 8 WEST OF THE MICHIGAN MERIDIAN, MICHIGAN
SURVEY OF THREE ISLANDS, SECTIONS 15 AND 22



Area Surveyed: 4.33 Acres

This plat represents the survey of three islands in Horsehead Lake, secs. 15 and 22, which were not included in the original survey of the township which is represented on the plat approved July 4, 1839.

Surveyed by Hugh B. Crawford, Cadastral Engineer, from June 18 to 20, 1956, under Special Instructions for Group 65, Michigan, dated June 4, 1956.

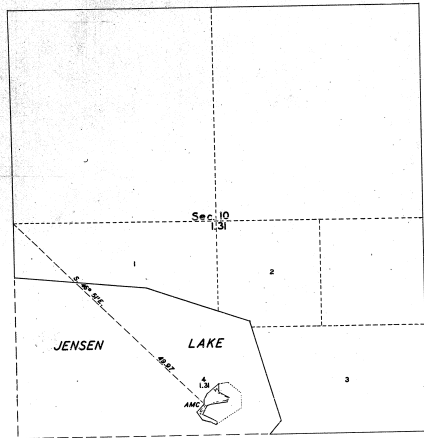
UNITED STATES DEPARTMENT OF THE INTERIOR
BUREAU OF LAND MANAGEMENT
Washington, D. C. December 21, 1956

This plat is strictly conformable to the approved field notes, and the survey, having been correctly executed in accordance with the requirements of law and the regulations of this Bureau, is hereby accepted.

For the Director
Don S. Harrington
Cadastral Engineering Staff Officer

TOWNSHIP 15 NORTH, RANGE 8 WEST, MICHIGAN MERIDIAN, MICHIGAN
SURVEY OF ISLAND, IN SECTION 10

12-24-0



This plat represents the survey of an island in Jensen Lake which was not included in the original survey of the township which is represented on the plat approved March 4, 1839.

Surveyed by Hugh B. Crawford, Cadastral Surveyor, from July 16 to 18, 1907, under Special Instructions for Group 66, Michigan, dated May 23, 1907.

UNITED STATES DEPARTMENT OF THE INTERIOR
BUREAU OF LAND MANAGEMENT
Washington, D. C. December 30, 1907

This plat is strictly conformable to the approved field notes, and the survey, having been correctly executed in accordance with the requirements of law and the regulations of this Bureau, is hereby accepted.

For the Director

A handwritten signature in cursive script, appearing to read 'Donald Clement'.

Acting Cadastral Engineering Staff Officer