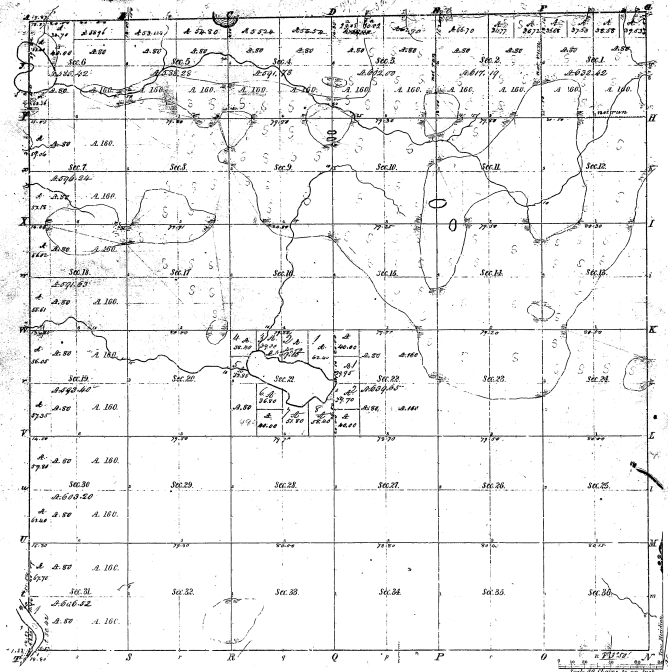


Township N^o 45 N., Range N^o 8 West Mer. (Mich.)



Albion

Boundaries of Township Areas, by a. & b.

From Course	1/2 Sec.	1/4 Sec.	1/2 Sec.	1/4 Sec.	Course	1/2 Sec.
<i>Section 1</i>						
<i>Section 2</i>						
<i>Section 3</i>						
<i>Section 4</i>						
<i>Section 5</i>						
<i>Section 6</i>						
<i>Section 7</i>						
<i>Section 8</i>						
<i>Section 9</i>						
<i>Section 10</i>						
<i>Section 11</i>						
<i>Section 12</i>						
<i>Section 13</i>						
<i>Section 14</i>						
<i>Section 15</i>						
<i>Section 16</i>						
<i>Section 17</i>						
<i>Section 18</i>						
<i>Section 19</i>						
<i>Section 20</i>						
<i>Section 21</i>						
<i>Section 22</i>						
<i>Section 23</i>						
<i>Section 24</i>						
<i>Section 25</i>						
<i>Section 26</i>						
<i>Section 27</i>						
<i>Section 28</i>						
<i>Section 29</i>						
<i>Section 30</i>						
<i>Section 31</i>						
<i>Section 32</i>						
<i>Section 33</i>						
<i>Section 34</i>						
<i>Section 35</i>						
<i>Section 36</i>						

11-21

11-21

Total number of Acres 22,428.38

Survey Township	By Whom Surveyed	Date of Original	Amount of Survey	When Surveyed	When first sold and to whom
Township lines	John W. Brown	July 15, 1839	22,428.38	3 ^d of 1839	3 ^d of 1838
Subdivisions	W. G. Pease	July 20, 1839	27,425.70	1 st of 1839	1 st of 1839

Be where: Map of Town N^o 45 North of Range 1st 9th East of the Principal Meridian Michigan is hereby approved to be the first copy of the survey thereof on file in this Office which has been examined and approved.

Surveyor General Office
 Detroit, Feb. 28th 1839

C. D. Pease, Secy. Genl.

