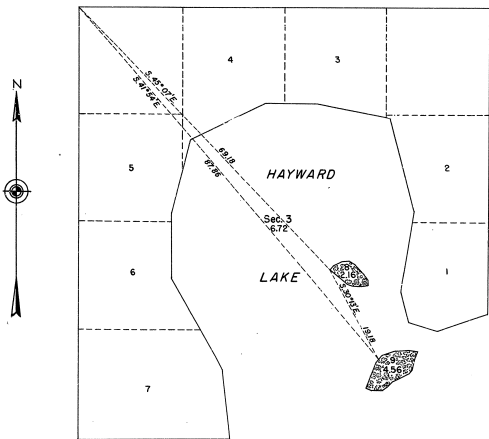




TOWNSHIP 34 NORTH, RANGE 26 WEST, OF THE MICHIGAN MERIDIAN, MICHIGAN  
 SURVEY OF ISLANDS IN SECTION 3.

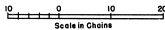
47-24  
 47-24



This plat represents the survey of two islands in Hayward Lake which were not included in the original survey of the township which is represented on the plat approved December 20, 1949.

Survey executed by Hugh E. Crawford, Coastal Engineer, from November 7 to 9, 1949, under special Instructions for Group 56, dated October 21, 1949.

Area Surveyed 6.72 Acres



UNITED STATES DEPARTMENT OF THE INTERIOR

BUREAU OF LAND MANAGEMENT

Washington, D. C., August 1, 1950

This plat is strictly conformable to the approved field notes, and the survey, having been correctly executed in accordance with the requirements of law and the regulations of this Bureau, is hereby accepted.

For the Director

*William F. Edwards*  
 Chief, Branch of Surveys