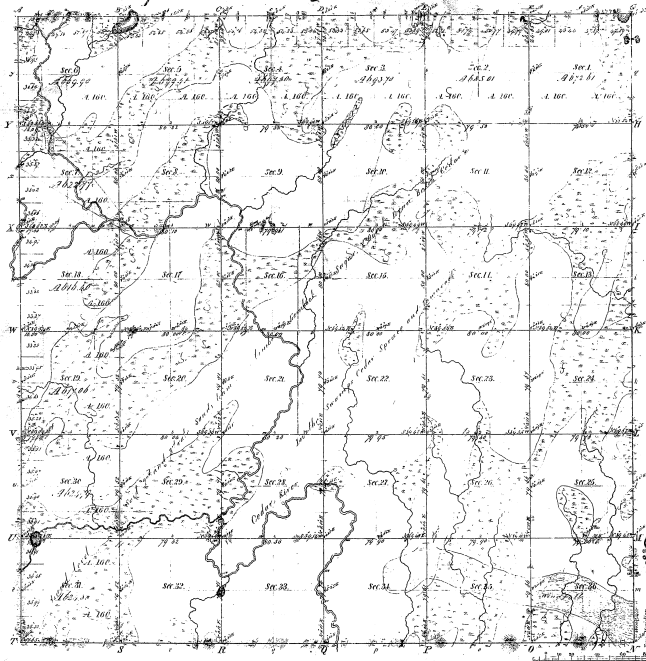


Township 1° 38' N Range 1° 25' W Mer.



Meridians 1°
 East Course 100° West Course 100° East Course 100°

475

47-36

Total number of Acres 23,224.53

Survey designated	By Whom Surveyed	Date of Contract	Amount of Acres	When Surveyed
Subdivisions	Geo. S. Chappin	March 1st 1852	23,224.53	27 June 1852

The above copy of Township 1° 38' North of Range 1° 25' West of the Meridian, Southern Michigan, is a true and correct copy of the survey thereof on file in this office, which have been examined and approved.
 Surveyor General's Office
 Lansing July 18 1852
 Geo. S. Chappin

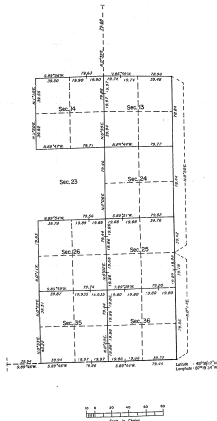
Geo. S. Chappin

Geo. S.

DUPLICATE ORIGINAL

TOWNSHIP 38 NORTH, RANGE 25 WEST OF THE MICHIGAN MERIDIAN, MICHIGAN.
DEPENDENT RESURVEY

47-34



A list of surveys is contained in the field note record.

This plat represents a dependent resurvey of a portion of the
west and east townships and a portion of the east original
township adjacent to section four north in range 25 west
of the Michigan meridian, Michigan.

The corner are as shown on the plat approved July 16, 1853.
Survey conducted by Douglas F. Ritter and Stephen D. Hughes,
Geological Surveyors, Michigan, July 13, 1885, and completed
June 2, 1905, pursuant to Special Instructions for Towns 20,
21, Michigan, made June 10, 1885.

UNITED STATES DEPARTMENT OF THE INTERIOR
BUREAU OF LAND MANAGEMENT
Alexandria, Virginia August 29, 1983

This plan is strictly conformable to the approved field notes,
and the survey having been correctly completed in accordance
with the requirements of law and the regulations of this
Bureau, is hereby accepted.

For the Director

James D. ...
Chief Geologist, Bureau of
Land Management
National Station Office