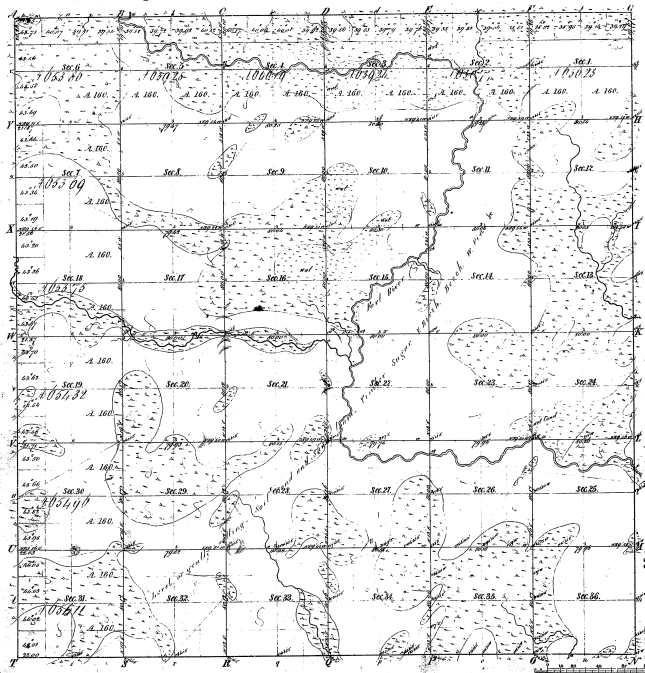


Township N° 41N Range N° 25W Mer. Mich.



Boundaries of
Public Courses V&W, Public Courses V&W, Public Courses V&W

38-37

38-38

Total number of Acres 28,118.70

Survey Designated	By Whom Surveyed	Date of Contract	Amount of Survey	When Surveyed	Where the same is at the Survey Office
Township - this	Blair C. MacLean	1856	28,118.70	1856	
Subdivisions	Blair C. MacLean	1856	28,118.70	1856	

This above Map of Township N° 41N, Range N° 25W, Mer. Mich. is a correct copy of the original Survey of MacLean's, and is hereby confirmed to the full extent of the surveying on file in this office, and has been examined and approved.

Surveyor General's Office
Lansing, Mich. 29 1883

W. C. Chapman
Supt. Genl.