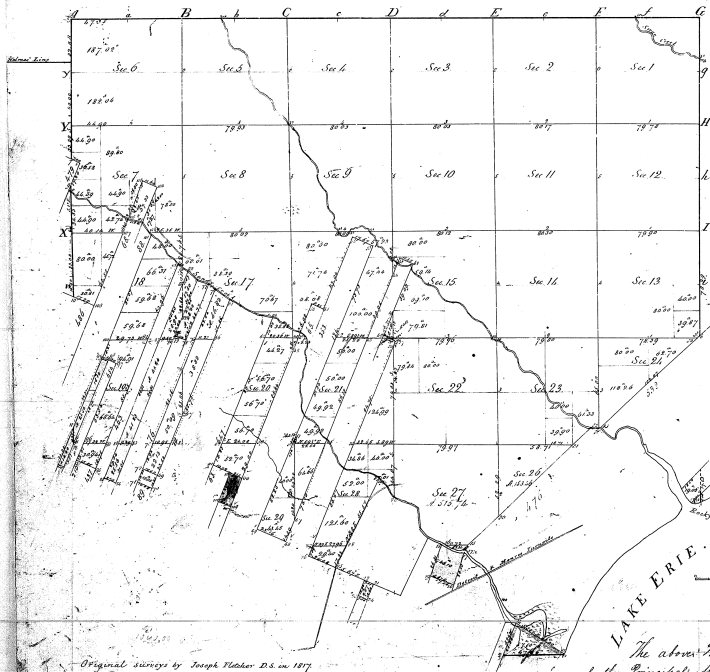


Township N^o 6 S. Range N^o 9 E. Mor. Mich.



Original surveys by Joseph Fisher D.S. in 1817
 Remeasured by Orange Bledsoe D.S. in 1827

The above Map of Township N^o 6 South, Range N^o 9 East
 of the Principal Meridian Michigan, is a copy conformable to the
 field notes of the survey thereof on file in this office, which have
 been examined and approved
 Surveyor General's Office
 Detroit, May 29, 1850

Charles Wells
 Surveyor General

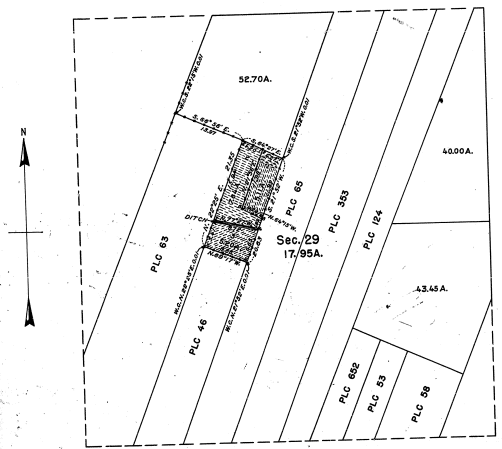
31-30

21-30

TOWNSHIP NO.6 SOUTH, RANGE NO.9 EAST, OF THE MICHIGAN MERIDIAN, MICHIGAN.
 DEPENDENT RESURVEY AND SUBDIVISION OF THE 19.33 ACRE TRACT, SECTION 29.

31-30

31-30
 ⑥



MEMORANDUM.

THIS PLAT OF T. 6 S., R. 9 E., DELINEATES A RETRACEMENT AND REESTABLISHMENT OF THE BOUNDARIES OF THE 19.33 ACRE LOT, SEC. 29, AS SHOWN UPON THE PLAT APPROVED MAY 29, 1850, IN THEIR TRUE ORIGINAL POSITIONS ACCORDING TO THE BEST AVAILABLE EVIDENCE OF THE POSITION OF THE ORIGINAL CORNERS, AND THE SUBDIVISION OF THAT LOT TO ACCOMMODATE APPLICATION G.L.O. 08725.

THE SURVEY WAS EXECUTED PURSUANT TO AUTHORITY CONTAINED IN GENERAL LAND OFFICE DECISION G.L.O. 08725 "A", DATED MAY 23, 1942.

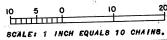
UNITED STATES DEPARTMENT OF THE INTERIOR
 GENERAL LAND OFFICE

DENVER, COLORADO, NOVEMBER 20, 1942.
 THIS PLAT OF SECTION 29, TOWNSHIP NO. 6 SOUTH, RANGE NO. 9 EAST, OF THE MICHIGAN MERIDIAN, STATE OF MICHIGAN, IS STRICTLY CONFORMABLE TO THE FIELD NOTES OF THE RESURVEY THEREOF, WHICH HAVE BEEN EXAMINED AND APPROVED.

WASHINGTON, D. C., DECEMBER 13, 1942.
 THE RESURVEY REPRESENTED BY THIS PLAT, HAVING BEEN CONDUCTED IN ACCORDANCE WITH THE REQUIREMENTS OF LAW AND THE REGULATIONS OF THIS OFFICE, IS HEREBY ACCEPTED.

James P. ...
 SUPERVISOR OF SURVEYS.

Joseph David ...
 ASSISTANT COMMISSIONER.



AREA RESURVEYED, 17.95 ACRES.

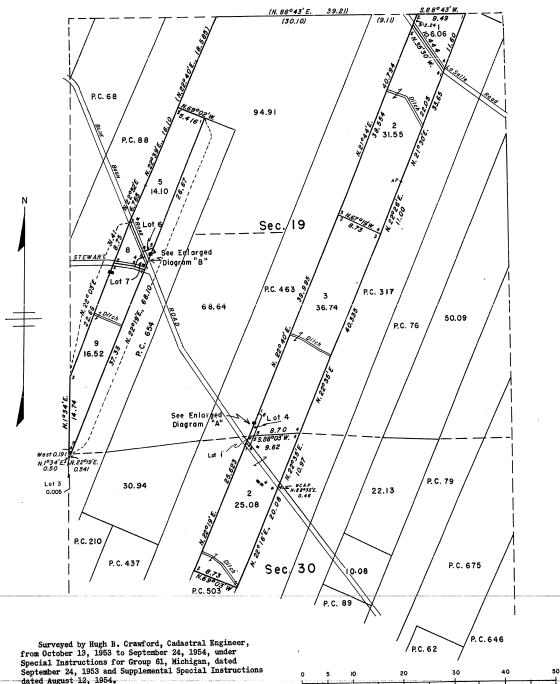
LINES DESIGNATED BY WHOM SURVEYED	GROUP NO.	DATE OF SPECIAL INSTRUCTIONS	WHEN SURVEYED	
			BEGUN	COMPLETED
MISCELLANEOUS	HAL D. CRAIG	MAY 20, 1942.	JUNE 4, 1942.	JUNE 9, 1942.

12



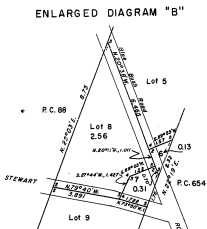
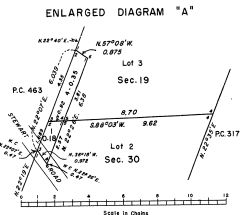
TOWNSHIP 6 SOUTH, RANGE 9 EAST, MICHIGAN MERIDIAN, MICHIGAN
LIMITED DEPENDENT RESURVEY AND SUBDIVISION OF PUBLIC LANDS
SECTIONS 19 AND 30

31-30 60



Surveyed by Hugh S. Crawford, Cadastral Engineer,
from October 13, 1903 to September 24, 1904, under
Special Instructions for Group 61, Michigan, dated
September 24, 1903 and Supplemental Special Instructions
dated August 12, 1904.

0 10 20 30 40 50
Scale in Chains
Area resurveyed: 133.585 acres



This plat represents the retracement and reestablishment of the boundaries of the 15.10, 21.30, 41.20 and 41.28 acre tracts of public lands in sec. 19, and the 25.56 acre tract and an adjacent tract of public lands in sec. 30, all as shown upon the plat approved May 29, 1900, in their true original positions according to the best available evidence of the position of the original corners, and the subdivisions of those tracts.

UNITED STATES DEPARTMENT OF THE INTERIOR
BUREAU OF LAND MANAGEMENT
Washington, D. C. July 29, 1905

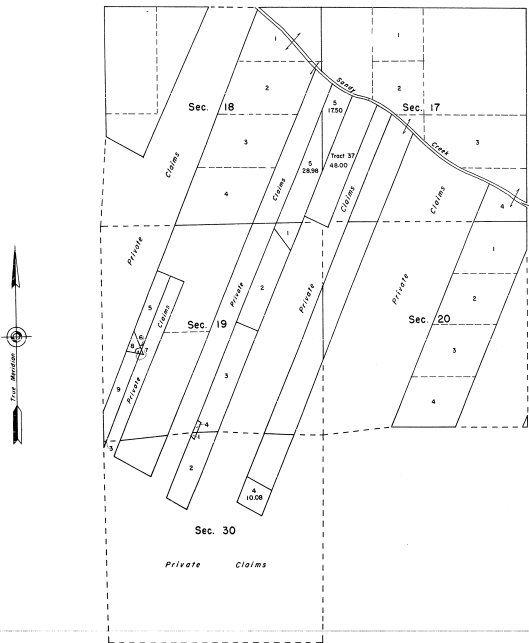
This plat is strictly conformable to the approved field notes, and the survey, having been correctly executed in accordance with the requirements of law and the regulations of this Bureau, is hereby accepted.

For the Director
Earl S. Hamilton
Cadastral Engineering Staff Officer

TOWNSHIP 6 SOUTH, RANGE 9 EAST, OF THE MICHIGAN MERIDIAN, MICHIGAN
 SUPPLEMENTAL PLAT, SECTIONS 17, 18, 19, 20, AND 30

This supplemental plat of sections 17 and 18, providing lot and tract numbers for areas which were not given designations on previous plats, is based on the plats approved February 20, 1818, May 29, 1850, and July 29, 1895.

31 30

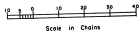


UNITED STATES DEPARTMENT OF THE INTERIOR
 BUREAU OF LAND MANAGEMENT
 Washington, D. C. November 14, 1966

This plat, showing new lottings, is based upon the official records, and having been correctly prepared in accordance with the regulations, is hereby accepted.

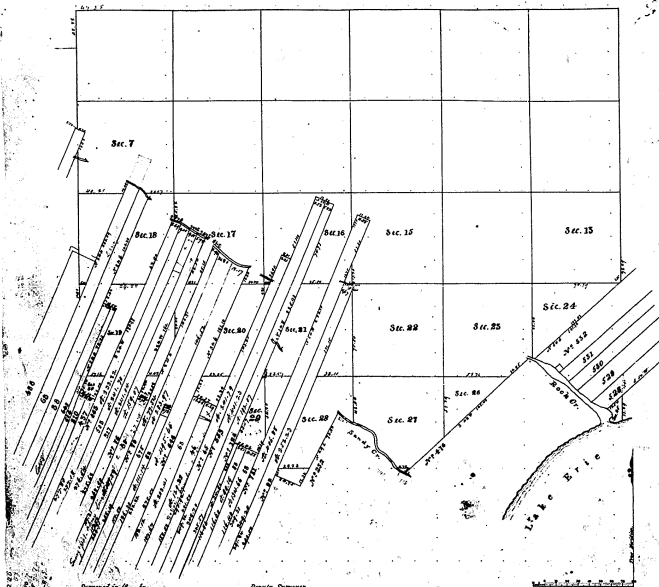
For the Director

E. L. Smith
 Chief, Division of Engineering



Township N. 6 South Range N. 9 East

Mer. Mich.



Surveyed by _____ Deputy Surveyor

I certify that the above is a true copy of the
file in the Office

Survey General's Office

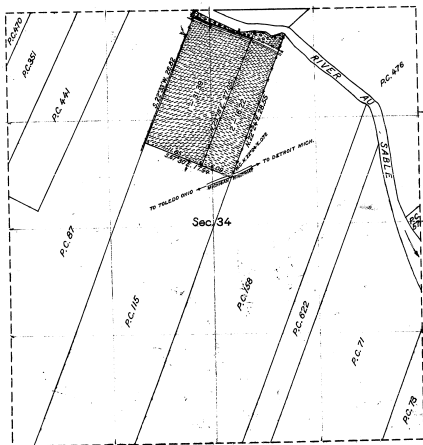
B. C.

FROM GROUP 60-B
M. H. C.
SURVEYED AND FILED WITH
OF M. C. S. - 1818-1852

TOWNSHIP No. 6 SOUTH, RANGE No. 9 EAST, OF THE MICHIGAN MERIDIAN, MICHIGAN
 SUPPLEMENTAL PLAT OF SECTION 34

Scale: 10 chains to an inch

31-30
 31-30



MEMORANDUM

THIS PLAT DELINEATES THE INDEPENDENT RESERVE OF PORTIONS OF THE BOUNDARIES OF PRIVATE LAND CLAIM NOS. 87, 113, AND 139, AND THE SUBDIVISION OF PUBLIC LANDS IN SECTION 34, DERIVING LOTTINGS OF FRACTIONAL ACRES TO ACCOMMODATE APPLICATION NO. 3, 0, 0077, SUBMITTED BY ARTHUR W. BROWN, U.S. CANADIAN SURVEYOR, FROM SEPTEMBER 24 TO OCTOBER 4, 1930, UNDER SPECIAL INSTRUCTIONS FOR GROUP NO. 22, DATED AUGUST 23, 1929, AUTHORIZED BY THE COMMISSIONER'S LETTER #4 DATED JULY 29, 1929.

THE PRIVATE LAND CLAIMS WERE SURVEYED BY ARTHUR GRUBLEY, SURVEYOR OF PRIVATE CLAIMS, IN 1809 AND 1810. THE SUBDIVISIONAL LINES WERE SURVEYED BY JOSEPH PLATTING, D. S., IN 1827, AS SHOWN UPON PLAT APPROVED FEBRUARY 20, 1828. A PORTION OF THE PRIVATE LAND CLAIM BOUNDARIES AND ADJOINING SECTION LINES WERE RESURVEYED BY ORANGE HIGDON, D. S., IN 1846 AND 1847, AS SHOWN UPON PLAT APPROVED MAY 29, 1850.

OFFICE OF THE U. S. SUPERVISOR OF SURVEYS,
 DENVER, COLORADO, AUGUST 25, 1931.

THE ABOVE SUPPLEMENTAL PLAT OF SECTION 34, TOWNSHIP NO. 6 SOUTH,
 RANGE NO. 9 EAST, OF THE MICHIGAN MERIDIAN, MICHIGAN, IS HEREBY COM-
 MENDED TO THE FIELD NOTES OF THE SURVEY THEREOF WHICH HAVE BEEN EX-
 AMINED AND APPROVED.

Wm. H. Dimes
 U. S. SUPERVISOR OF SURVEYS.

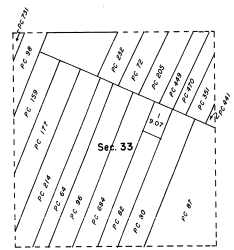
DEPARTMENT OF THE INTERIOR
 GENERAL LAND OFFICE,
 WASHINGTON, D. C., AUGUST 25, 1931.

THE SURVEY REPRESENTED BY THIS PLAT HAVING BEEN CONSIDERED REQUIR-
 ED IN ACCORDANCE WITH THE REQUIREMENTS OF LAW AND REGULATIONS OF THIS OFFICE,
 IS HEREBY APPROVED.

John A. Hancock
 ASSISTANT COMMISSIONER.

31-30

TOWNSHIP 6 SOUTH, RANGE 9 EAST, OF THE MICHIGAN MERIDIAN, MICHIGAN
 SUPPLEMENTAL PLAT



This supplemental plat, based upon the plat approved May 29, 1899, has been prepared as an administrative measure to provide a lot designation for so much of section 33 as has not previously been patented.

UNITED STATES DEPARTMENT OF THE INTERIOR
 BUREAU OF LAND MANAGEMENT
 Washington, D. C. January 15, 1969

This plat, showing amended lotting, is based upon the official records, and having been correctly prepared in accordance with the regulations, is hereby accepted.

For the Director

R. E. Brown

Chief, Division of Engineering